

The Catch of the Season.



PRODUCED BY
CHAS. FROHMAN'S CO.
PRESENTING
EDNA MAY



BOOK BY
SEYMOUR HICKS
AND
COSMO HAMILTON

LYRICS BY
CHAS. H. TAYLOR

MUSIC BY
HERBERT E. HAINES
EVELYN BAKER
W. T. FRANCIS

STAGED BY
BEN. TEAL

PUBLIC PERFORMANCE
PROHIBITED WITHOUT
PERMISSION

VOCAL.

The Church Parade,	(Music by Herbert E. Haines)	60
My Little Buttercup,	(" by Luke Forwood)	60
Mollie O'Halloran,	(" by Evelyn Baker)	60
Any Other Day Will Do,	(" by W. T. Francis)	60
Little Bit of Dinner with a Friend,	Music by W. T. Francis	60
Little Girl You'll Do,		60
Words by Benj. Hapgood Burl,	" by Alfred Solman	
Suppose, (Duet)	(" by Herbert E. Haines)	60
I'll Be A Good Little Girl,	(" by Herbert E. Haines)	60
Back to Harrow,	(" by W. T. Francis)	60
Rainbow, (Words by Fred W. Leigh,	" by H. F. Pether)	60

INSTRUMENTAL.

Selection	\$1.00
Waltz	75
The Church Parade March	60
Complete Vocal Score	2.00



London: - FRANCIS, DAY & HURTER.

SWANSON'S
MUSIC STORE
205 W. 3rd St.

SMUS
1283

SWANSON'S
MUSIC STORE
205 W 8dth St.

Little Girl You'll Do.

Written by
BENJ. H. BURT.

Composed by ALFRED SOLMAN.
Composer of "In Sweet Loveland."

Valse lento.

Piano. *p dolce e delicato*

The piano introduction is in 3/4 time, marked 'Valse lento'. It features a delicate melody in the right hand and a simple accompaniment in the left hand. The music is written in a key with two flats (B-flat major or D-flat minor). The dynamics are marked 'p' (piano) and 'dolce e delicato'.

Tempo di Valse.

Lis-ten to me lit-tle girl! You with the eyes of blue,
When I found you lit-tle girl! You with your grace and smile,

The first line of the song is in 3/4 time, marked 'Tempo di Valse'. The vocal line is in the treble clef, and the piano accompaniment is in the bass clef. The lyrics are: 'Lis-ten to me lit-tle girl! You with the eyes of blue, When I found you lit-tle girl! You with your grace and smile,'

There's on - ly one lit - tle girl, And that lit - tle
'Twas then I knew lit - tle girl, That life might be

The second line of the song continues the melody. The lyrics are: 'There's on - ly one lit - tle girl, And that lit - tle 'Twas then I knew lit - tle girl, That life might be

girl is you. Deep in my heart there's a love that's true,
made worth while. Friendship has found in my heart a love,

The third line of the song concludes the phrase. The lyrics are: 'girl is you. Deep in my heart there's a love that's true, made worth while. Friendship has found in my heart a love,'

Wait-ing and long-ing a - lone for you: So dear lit - tle girl! Be
 Con-stant and true as the stars a - bove: For you lit - tle girl! Just

my lit - tle girl And lis - ten to what I've to say: _____
 you lit - tle girl, So lis - ten to what I've to say: _____

Refrain.

If your heart's as true, _____ As your eyes

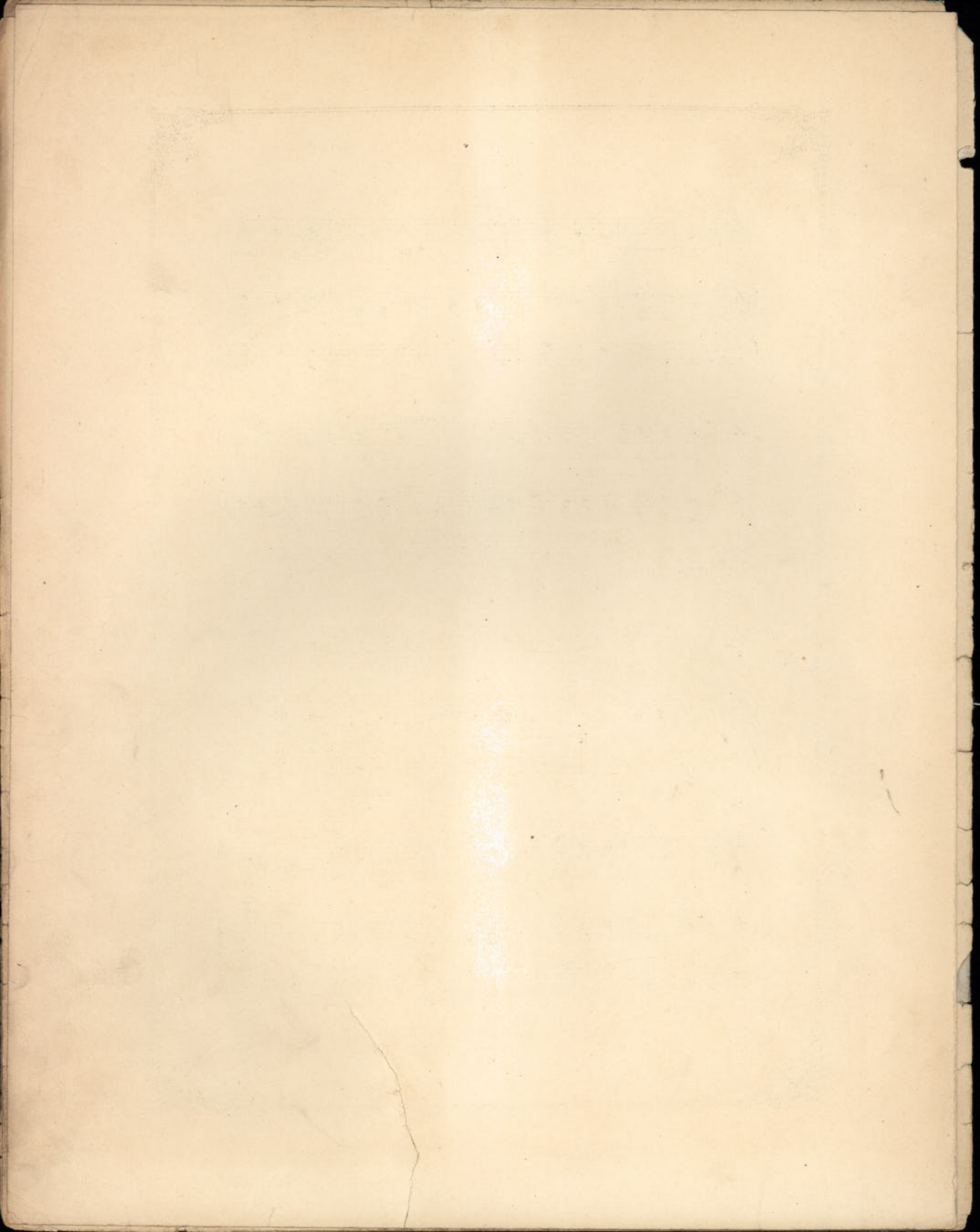
are blue, _____ lit - tle girl you'll

do, For me all life through, for there's

no - bod - y else but you, whom I'd care

to woo, Lit - tle girl Lit - tle

girl Lit - tle girl, you'll do!



Quite an enviable distinction this dainty little waltz song, "Little Girl, You'll Do," has won for itself when press and public have declared it to be the greatest success in Edna May's production of the "School Girl." As interpreted by Mr. Andrews, the tenor of the company, it takes several encores at each performance, and occupies a unique position as the musical masterpiece of the production.

Little Girl, You'll Do.

Written by BENJ. H. BURT.

Composed by ALFRED SOLMAN.

Composer of "In Sweet Loveland."

REFRAIN.

If your heart's as true As your eyes are blue, lit-tle

p a tempo

girl, you'll do, For me all life thro', for there's no-bod-y else

but you . . . whom I'd care to woo, Lit-tle girl! . . . Lit-tle

mf *p* *rit.* *p legato. dolce e delicato.*

Copyright, MCMV, by Jos. W. Stern & Co. British Copyright Secured.

This Composition can be obtained of your Music Dealer, or if not, send 25 cents to the Publishers.

JOS. W. STERN & CO.,
34 East 21st Street, New York City.

COMPLETE CATALOGUES OF
Vocal and Instrumental Publications
MAILED ON REQUEST.