



Survey Results Fall 2006

Table of Contents

Executive Summary & Study Methods	iii
Preliminary Survey Results	1
<i>Section I. Demographics</i>	1
Institution affiliation	2
Institution type.....	4
Academic discipline	5
Gender	6
Age.....	7
Academic level.....	8
Employment Status.....	9
Distance from campus	10
Registration status	11
<i>Section II. Online Ability & Experience</i>	12
Internet connection type.....	12
Level of experience with SLN/CourseSpace courses.....	13
Level of personal computer skills before enrolling in this course	13
Course offered via SLN or CourseSpace	15
Blended/hybrid course	16
Main reason for taking courses in an online format.....	17
Other course options if online course was not available	18
Desire to take other online courses in the future	19
Planning to complete entire degree online	20
<i>Section III. Student Online Course</i>	21
Satisfaction with this course.....	21
Learned a great deal in this course.	22
Interaction with instructor	23
Quality of interaction with instructor	24
Interaction with fellow classmates	25
Quality of interaction with classmates.....	26
<i>Section IV. Student Views of Course Instructor</i>	27
Prompt in providing feedback	27
Provided constructive feedback on assignments.....	28
Expected high quality work from students	29
Clearly communicated how to succeed in the course.	30
<i>Section V. Comparison of Traditional and Online Courses</i>	31
Level of interaction with the course instructor.....	31
Level of interaction with fellow classmates in this course.....	32
Level of learning in course.....	33
<i>Section VI. Satisfaction with SLN / CourseSpace Services</i>	34
Satisfaction with the SUNY Learning Network/ CourseSpace Program.....	34
Satisfied with the technical support from the SLN/CourseSpace Helpdesk.	35
<i>Section VII. Impact of Online Medium</i>	36
Actively participated in scheduled discussions.....	36
Sought clarification.....	37
Discussed the ideas and concepts taught with other students.....	38
Work collaboratively with classmates.	39
Actively investigated questions or topics of interest	40
<i>Section VIII. Impact of Online Medium in Course</i>	41
More reflective thought into online discussion comments	41
Learned to communicate ideas more effectively in writing.	42
Quality of interaction with instructor.....	43
Quality of interaction with classmates.....	44
<i>Section IX. General Course Information</i>	45
Use of other media.....	45
Considered dropping out of this course.....	46
<i>Section X. General Medium Information</i>	47
Comfortable asking an awkward question	47
Isolation due to the use of online communication.....	48
Comfortable disagreeing with the instructor via online communication.	49
Spent more time studying.	50
Additional time spent studying was productive.	51
Would recommend online learning to others.	52

Executive Summary & Study Methods

The following report contains frequency and percentages representing responses collected from the SUNY Learning Network (SLN) - CourseSpace Student Online Survey for the fall semester of 2006. The survey sought to obtain general information regarding students' online or web-enhanced experiences. The survey consisted of 50 quantifiable items and 9 open narrative items. An analysis of narrative responses (i.e., open responses), is not included within this preliminary report.



Between December 14, 2006 and February 15, 2007, 6551 questionnaires were electronically collected. Several surveys were submitted with partially missing data pertaining to specific questions. These surveys were included in the final sample of 6551 and were analyzed in this report. Files containing partial data account for the changing sample size represented in frequency tables 1, 2, 4 and 8-10. Here the notation of 'Missing Data' – refers to surveys collected in which no answers were provided for the specific question.

In addition to responses not given, several survey items used the branching procedure described in the faculty survey summary. In these items, the survey was constructed to allow students to skip questions that were not relevant to their learning experiences. Survey items 12a, 13 -17, and narrative items 15, and 29-34 were branched according to each student's response to item 12, which asked: *Was this course offered via SLN or was it a classroom-based course utilizing CourseSpace online enhancements?* Students who replied: SLN - were routed to items 13-17 and narrative questions 29 – 30. While students who replied: CourseSpace were routed to item: 12a. *Was this a blended/hybrid course?* Those who replied 'Yes or I choose not to answer this question,' were routed directly to items 18-28 and upon reaching the end of the survey to the narrative questions 31-32. CourseSpace students who replied 'No' to item 12a were routed directly items 18-28 and the narrative questions 33-34. All students were asked to complete items 35 and 36. Thus, students were routed to or away from certain items and were not given the opportunity to answer all survey questions. Notations are provided in frequency tables 12a, and 13-17 explaining the missing data counts due to programmed branching.

The student survey was also created using the commercial software package licensed by WebSurveyor Corporation. Participants consisted of students currently registered in the SUNY system either as a fulltime or part-time undergraduates and graduates or as non-matriculated students enrolled in online courses via SLN or CourseSpace during the fall academic term of 2006. The students received a broadcast email asking each to complete and submit an online survey for each online / web-enhanced course they were taking. Students were routed to the online survey via:

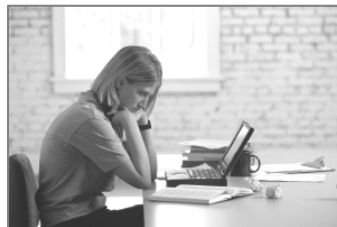


The analysis of survey responses were conducted using SPSS 15.0 software.

Preliminary Survey Results

Section I. Demographics

Gender	Percent
Female	73.3
Male	26.7
Age	
18 – 21	19.4
22 – 25	17.4
26 – 30	14.6
31 – 35	11.4
36 – 40	11.1
Academic Categorization	
Sophomores	23.0
Seniors	17.4
Juniors	16.3
Freshmen	14.7
Faculty's Primary Discipline/Field	
Social sciences	63.3
Physical and life sciences and engineering	18.3
Arts and humanities	15.5
Institution Type	
Community College	53.7
University College	34.0
Technology College	8.5
Type of Delivery System	
SUNY Learning Network	86.4
CourseSpace	10.6



1. Institution affiliation

Table 1

College of enrollment

	Frequency	Percent	Valid Percent	Cumulative Percent
Adirondack Community College	154	2.4	2.4	2.4
Albany at University	219	3.3	3.3	5.7
Alfred State Technology College	1	.0	.0	5.7
Alfred University, NYS College of Ceramics	1	.0	.0	5.7
Binghamton University Center	2	.0	.0	5.8
Brockport University College	47	0.7	0.7	6.5
Broome Community College	155	2.4	2.4	8.8
University at Buffalo	1	.0	.0	8.9
Buffalo State University College	11	0.2	0.2	9.0
Canton Technology College	1	.0	.0	9.0
Cayuga Community College	264	4.0	4.0	13.1
Clinton Community College	51	0.8	0.8	13.8
Columbia-Greene Community College	1	.0	.0	13.9
Cortland University College	12	0.2	0.2	14.0
Delhi Technology College	12	0.2	0.2	14.2
Dutchess Community College	94	1.4	1.4	15.7
Empire State University College	1608	24.5	24.6	40.2
Environmental Science & Forestry University	5	0.1	0.1	40.3
Erie Community College	9	0.1	0.1	40.4
Farmingdale State Technology College	169	2.6	2.6	43.0
Fashion Institute of Technology	158	2.4	2.4	45.4
Finger Lakes Community College	113	1.7	1.7	47.2
Fredonia University College	24	0.4	0.4	47.5
Fulton-Montgomery Community College	45	0.7	0.7	48.2
Genesee Community College	46	0.7	0.7	48.9
Geneseo University College	1	.0	.0	48.9
Herkimer County Community College	328	5.0	5.0	53.9
Hudson Valley Community College	31	0.5	0.5	54.4
Jamestown Community College	93	1.4	1.4	55.8
Jefferson Community College	179	2.7	2.7	58.6
Maritime Technology College	30	0.5	0.5	59.0
Mohawk Valley Community College	3	.0	.0	59.1
Monroe Community College	518	7.9	7.9	67.0
Morrisville State Technology College	2	.0	.0	67.0
Nassau Community College	2	.0	.0	67.0
New Paltz University College	8	0.1	0.1	67.2
Niagara County Community College	175	2.7	2.7	69.8
North Country Community College	4	0.1	0.1	69.9
Old Westbury University College	28	0.4	0.4	70.3
Oneonta University College	18	0.3	0.3	70.6
Onondaga Community College	218	3.3	3.3	73.9
Orange County Community College	1	.0	.0	73.9
Oswego University College	377	5.8	5.8	79.7
Plattsburgh University College	91	1.4	1.4	81.1
Potsdam University College	1	.0	.0	81.1

Table 1

College of enrollment continued

	Frequency	Percent	Valid Percent	Cumulative Percent
Oswego University College	377	5.8	5.8	79.7
Plattsburgh University College	91	1.4	1.4	81.1
Potsdam University College	1	.0	.0	81.1
Rockland Community College	66	1.0	1.0	82.1
Schenectady County Community College	126	1.9	1.9	84.0
Suffolk County Community College	312	4.8	4.8	88.8
Sullivan County Community College	38	0.6	0.6	89.4
SUNY Institute of Technology	341	5.2	5.2	94.6
Tompkins Cortland Community College	217	3.3	3.3	97.9
Ulster County Community College	114	1.7	1.7	99.6
Upstate Medical University Center	2	.0	.0	99.7
Westchester Community College	1	.0	.0	99.7
Chose not to answer	5	0.1	0.1	99.8
Other	16	0.2	0.2	100.0
Total	6549	100.0	100.0	
Missing data*	2	.0		
Total	6551	100.0		

* Missing data – refers to surveys collected in which no answers were provided for this specific question.



1a. Institution type

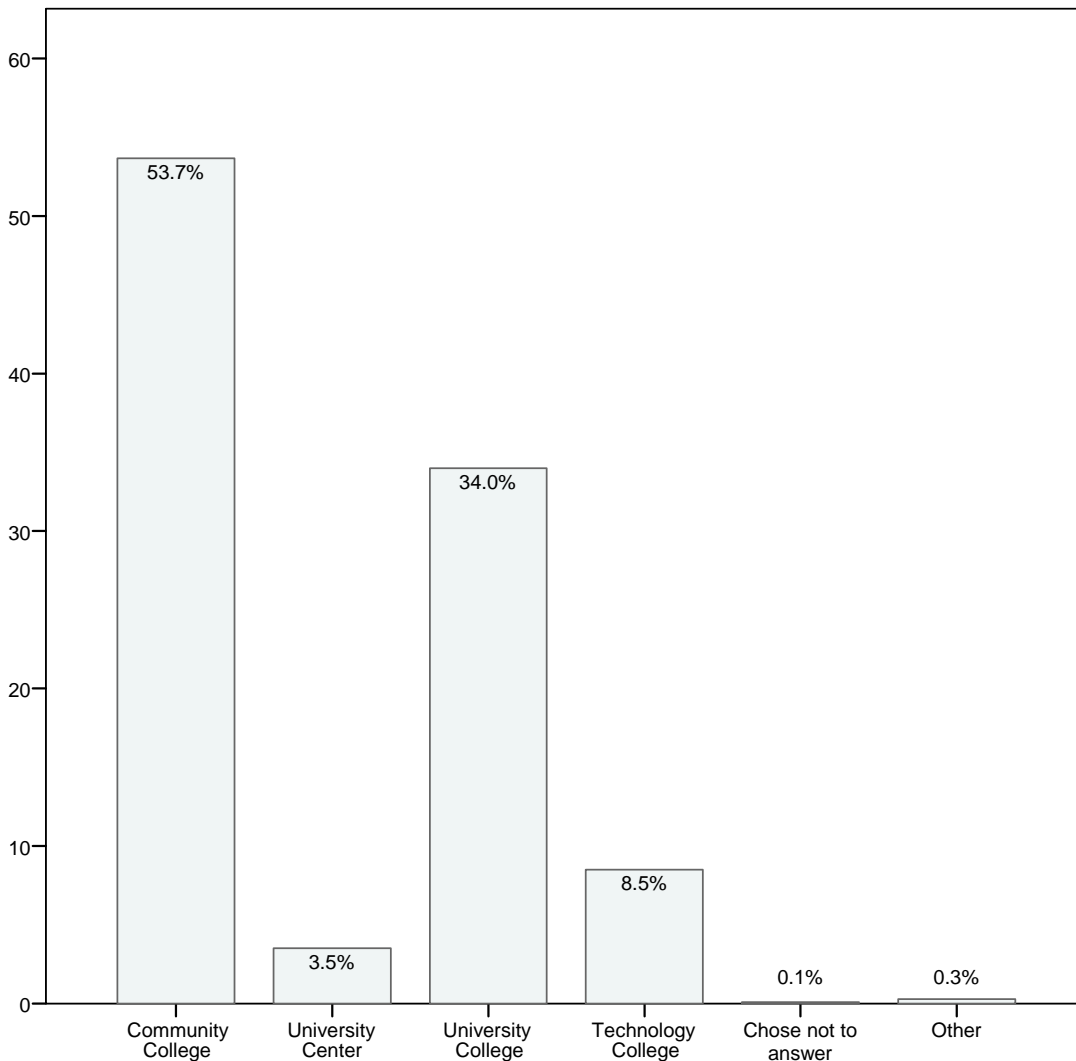
- Community College
- University Center
- University College
- College of Technology
- Health Science Center
- Specialized College
- I choose not to answer this question.
- Other (please specify)

Table 1a

Institution type

	Frequency	Percent	Valid Percent	Cumulative Percent
Community College	3516	53.7	53.7	53.7
University Center	230	3.5	3.5	57.2
University College	2226	34.0	34.0	91.2
Technology College	556	8.5	8.5	99.6
Chose not to answer	5	0.1	0.1	99.7
Other	18	0.3	0.3	100.0
Total	6551	100.0	100.0	

Figure 1a. Institution type



2. Academic discipline

(Respondents were asked to select from a list 64 possible discipline options, I choose not to answer this question, or other. Submitted responses were grouped into three primary discipline categories that are represented in Table 4 and Figure 4).

Table 2

Content Area Condensed

	Frequency	Percent	Valid Percent	Cumulative Percent
Valid	Arts & humanites ¹	1014	15.5	15.5
	Physical / life sciences & engineering ²	1197	18.3	33.8
	Social sciences ³	4141	63.2	63.3
	Chose not to answer	82	1.3	98.4
	Other	107	1.6	100.0
	Total	6541	99.8	100.0
Missing data*	10	0.2		
Total	6551	100.0		

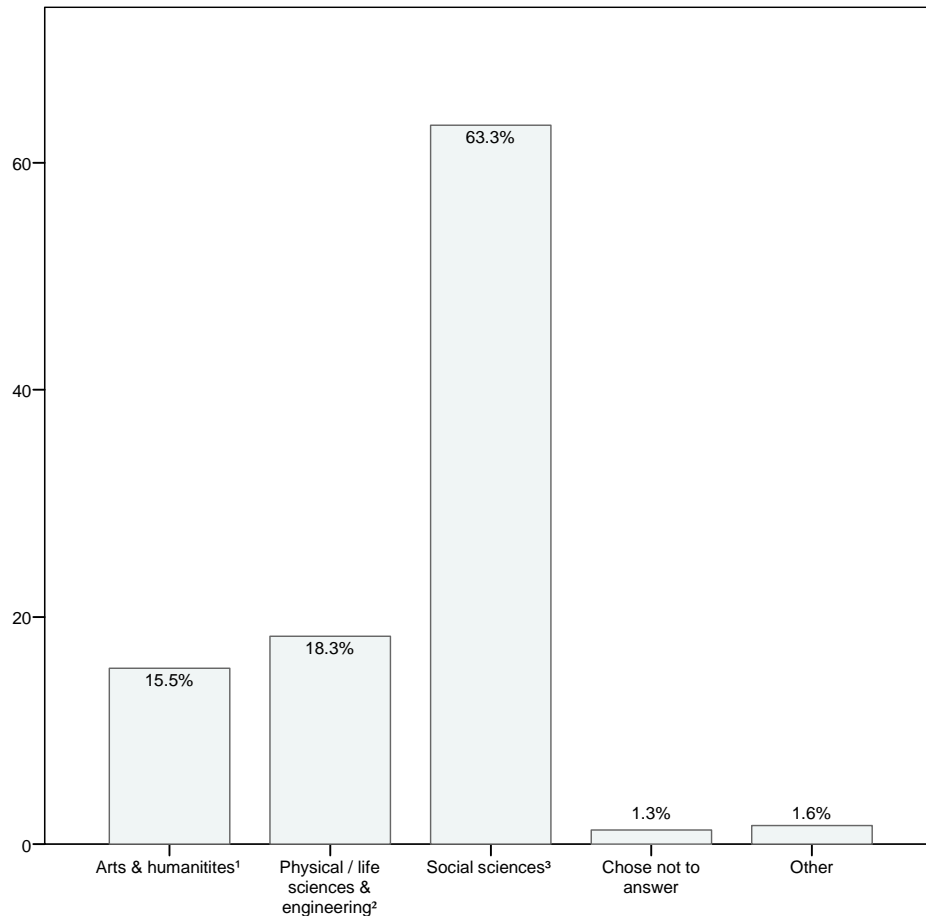
¹ Includes: American history, American literature, American studies, architecture, archeology, area studies, fine arts, art history, classics, communications, creative writing, English, history (non-U.S.), journalism, language and literature (non-U.S.), music, musicology, philosophy, religious studies and theater art.

² Includes: agriculture, animal science, astronomy, biological sciences, chemistry, computer science, engineering, environmental sciences, food technology, geology, mathematics, medical sciences and physics.

³ Includes: anthropology, business administration, business management, city/urban planning, economics, education, educational psychology, geography, law, library science, linguistics, physical education, political science, psychology, public administration, social work, sociology and TEFL/applied linguistics.

* Missing data – refers to surveys collected in which no answers were provided for this specific question.

Figure 2. Academic discipline



3. Gender

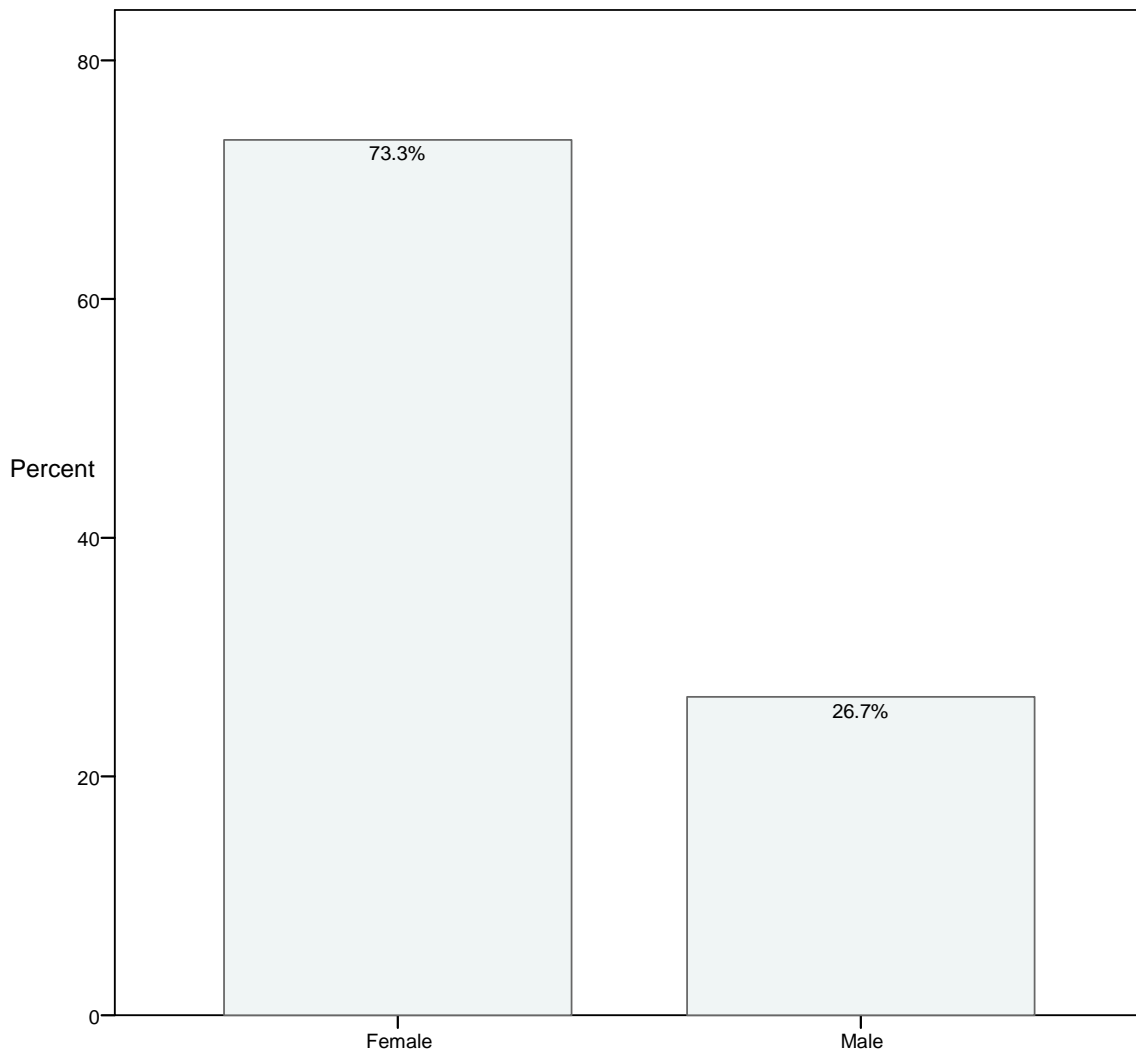
- Male
- Female
- I choose not to answer this question

Table 3

Respondents' gender

	Frequency	Percent	Valid Percent	Cumulative Percent
Female	4805	73.3	73.3	73.3
Male	1746	26.7	26.7	100.0
Total	6551	100.0	100.0	

Figure 3. Gender



4. Age

- Under 18 years
- 18 - 21
- 22 - 25
- 26 - 30
- 31 - 35
- 36 - 40
- 41 - 45
- 46 - 50
- 51 - 55
- 56 - 60
- 61 - 65
- 66 or older
- I choose not to answer this question

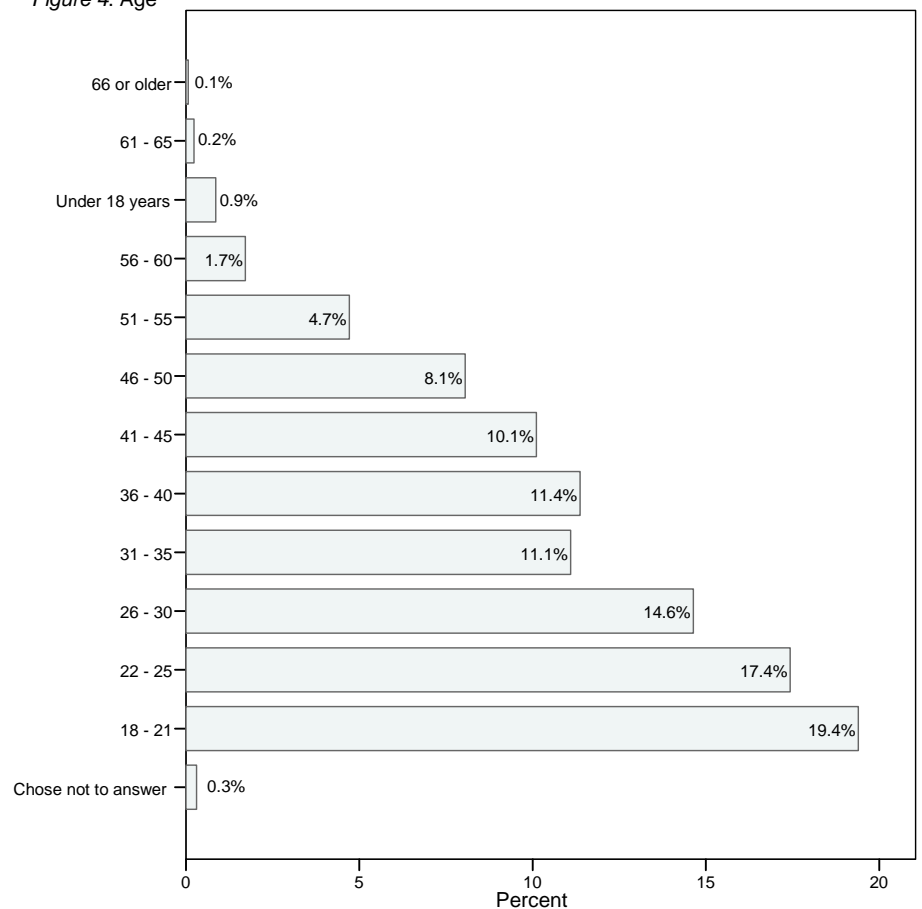
Table 4

Respondents' age

		Frequency	Percent	Valid Percent	Cumulative Percent
Valid	Under 18 years	56	0.9	0.9	0.9
	18 - 21	1264	19.3	19.4	20.3
	22 - 25	1136	17.3	17.4	37.7
	26 - 30	954	14.6	14.6	52.3
	31 - 35	723	11.0	11.1	63.4
	36 - 40	741	11.3	11.4	74.8
	41 - 45	659	10.1	10.1	84.9
	46 - 50	525	8.0	8.1	93.0
	51 - 55	307	4.7	4.7	97.7
	56 - 60	112	1.7	1.7	99.4
	61 - 65	15	0.2	0.2	99.6
	66 or older	4	0.1	0.1	99.7
	Chose not to answer	20	0.3	0.3	100.0
Total		6516	99.5	100.0	
Missing data*		35	0.5		
Total		6551	100.0		

* Missing data – refers to surveys collected in which no answers were provided for this specific question.

Figure 4. Age



5. Academic level

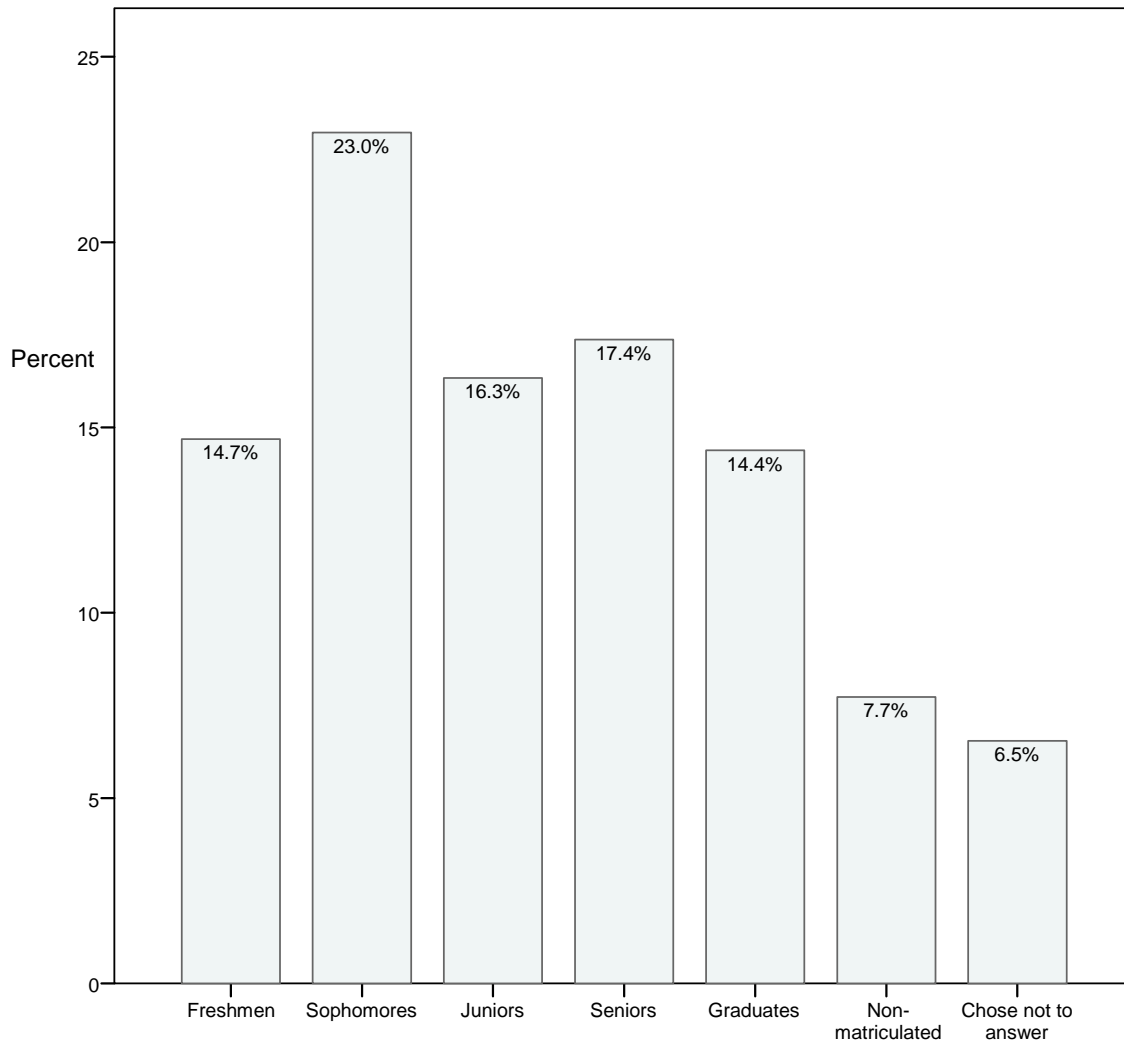
- Freshman
- Sophomore
- Junior
- Senior
- Graduate
- Non-matriculated
- I choose not to answer this question

Table 5

Students' academic level

	Frequency	Percent	Valid Percent	Cumulative Percent
Freshmen	962	14.7	14.7	14.7
Sophomores	1504	23.0	23.0	37.6
Juniors	1070	16.3	16.3	54.0
Seniors	1138	17.4	17.4	71.3
Graduates	942	14.4	14.4	85.7
Non-matriculated	506	7.7	7.7	93.5
Chose not to answer	429	6.5	6.5	100.0
Total	6551	100.0	100.0	

Figure 5. Academic Level



6. Employment Status

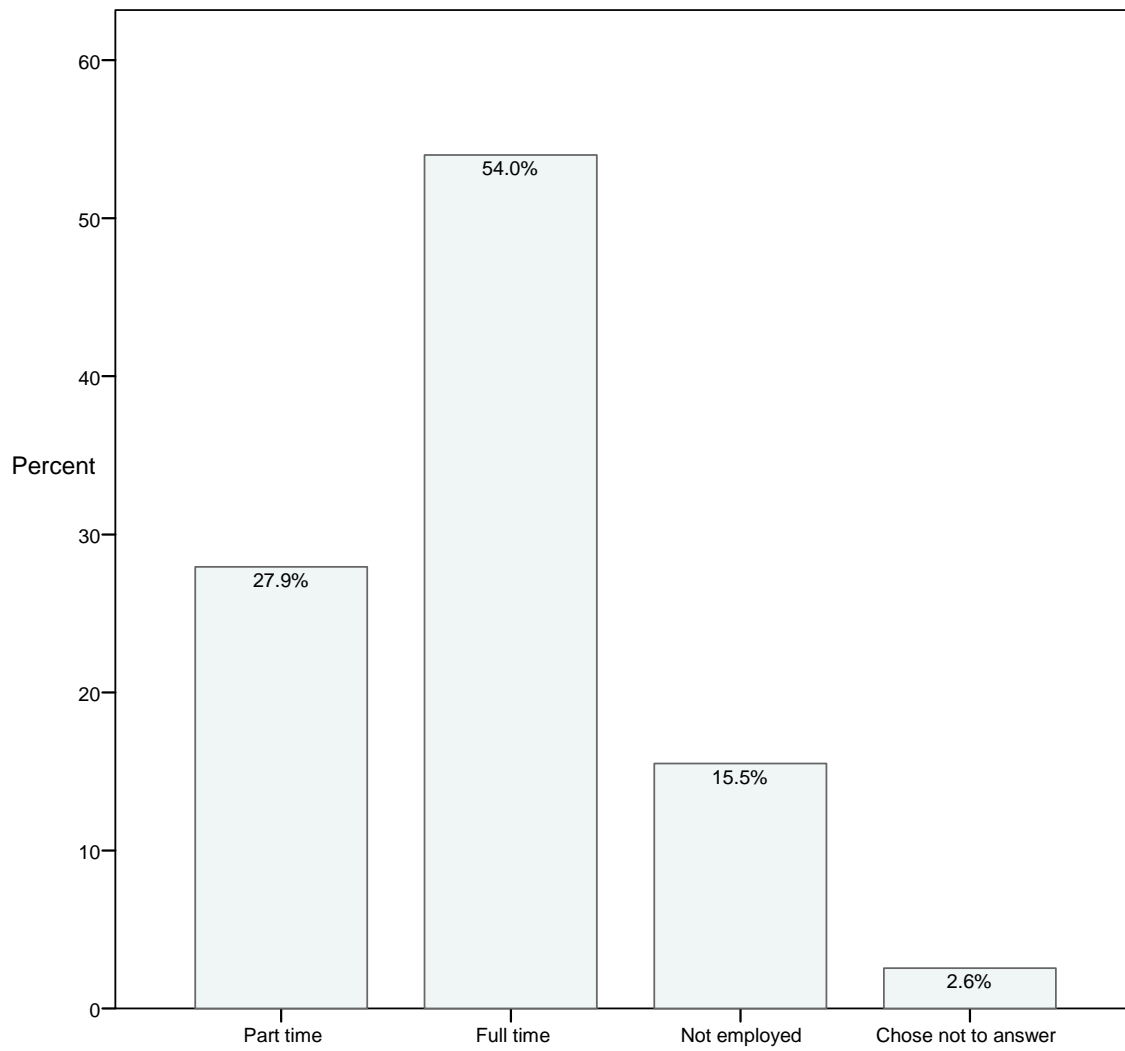
- Part time
- Full time
- Not employed
- I choose not to answer this question

Table 6

Students' employment status

	Frequency	Percent	Valid Percent	Cumulative Percent
Part time	1831	27.9	27.9	27.9
Full time	3537	54.0	54.0	81.9
Not employed	1015	15.5	15.5	97.4
Chose not to answer	168	2.6	2.6	100.0
Total	6551	100.0	100.0	

Figure 6. Employment status



7. Distance from campus

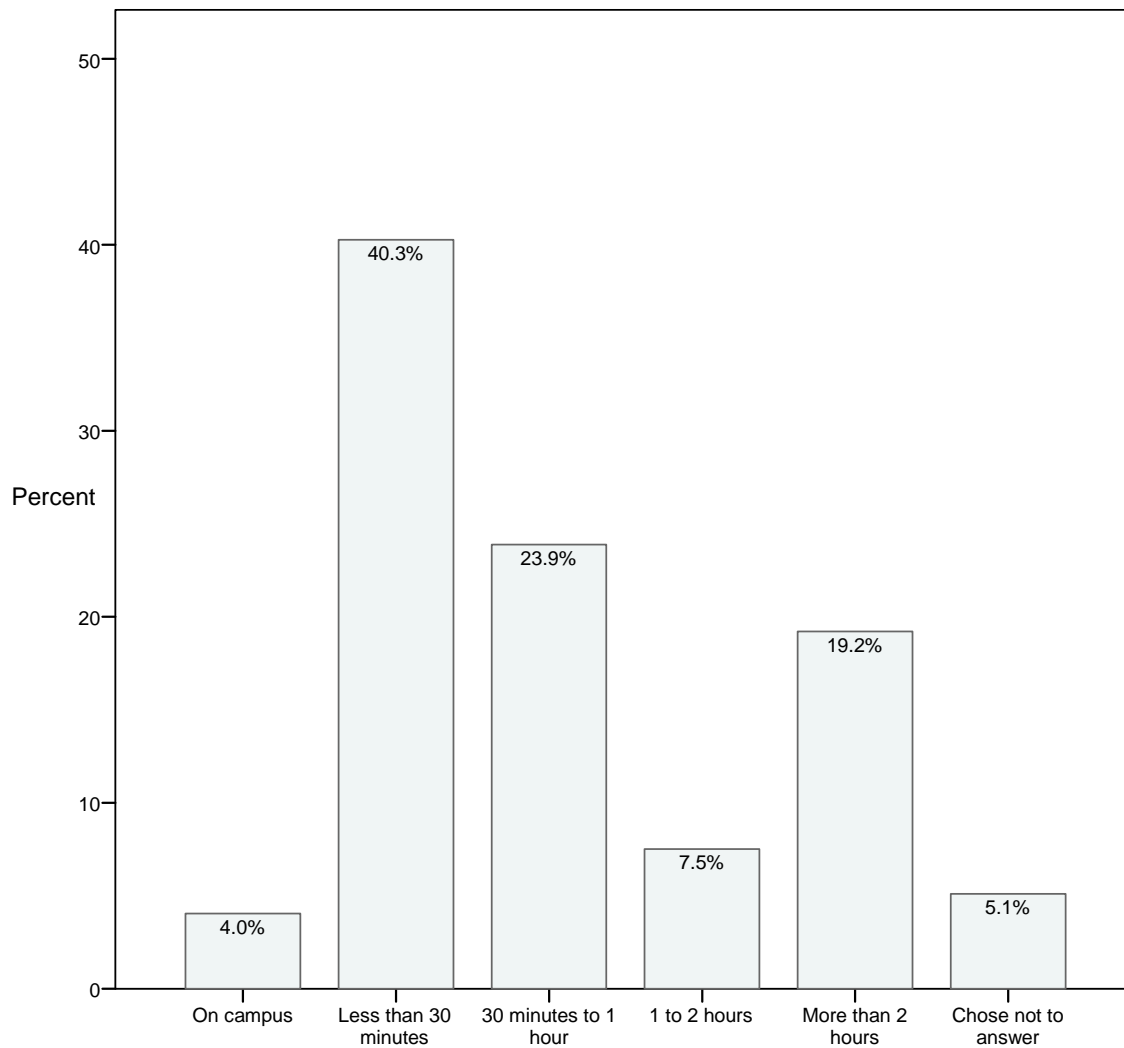
- On campus
- Less than 30 minutes
- 30 minutes to 1 hour
- 1 to 2 hours
- More than 2 hours
- I choose not to answer this question

Table 7

Distance from campus

	Frequency	Percent	Valid Percent	Cumulative Percent
On campus	264	4.0	4.0	4.0
Less than 30 minutes	2638	40.3	40.3	44.3
30 minutes to 1 hour	1565	23.9	23.9	68.2
1 to 2 hours	492	7.5	7.5	75.7
More than 2 hours	1258	19.2	19.2	94.9
Chose not to answer	334	5.1	5.1	100.0
Total	6551	100.0	100.0	

Figure 7. Distance from campus



8. Registration status

- Full time
- Part time
- I choose not to answer this question

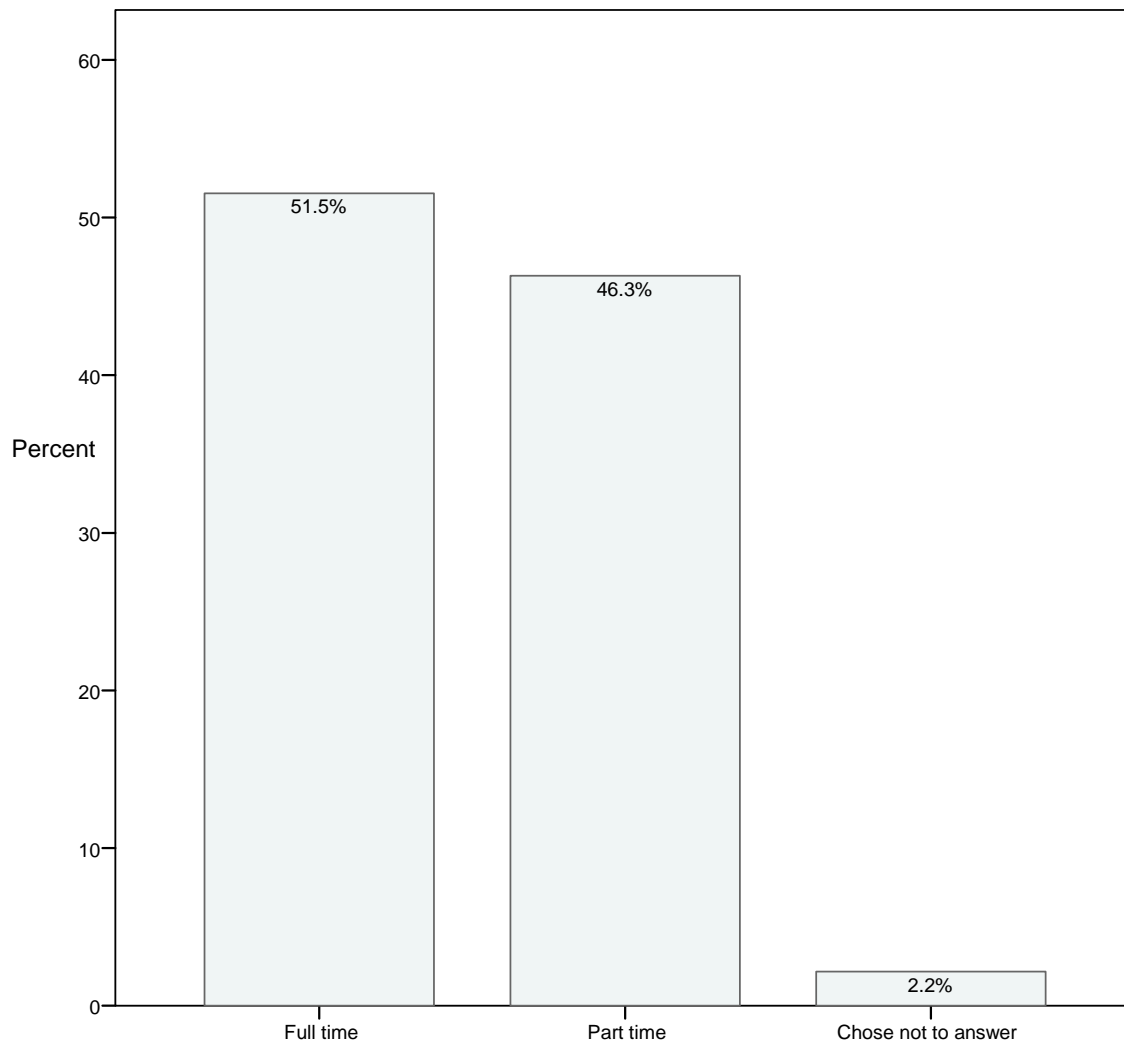
Table 8

Registration status

		Frequency	Percent	Valid Percent	Cumulative Percent
Valid	Full time	3372	51.5	51.5	51.5
	Part time	3030	46.3	46.3	97.8
	Chose not to answer	141	2.2	2.2	100.0
	Total	6543	99.9	100.0	
Missing data*		8	0.1		
Total		6551	100.0		

* Missing data – refers to surveys collected in which no answers were provided for this specific question.

Figure 8. Registration status



Section II. Online Ability & Experience

9. Internet Connection Type

- Low speed (Dial up, 56k modem or less)
- High speed (Cable modem, DSL, ISDN, LAN, etc)
- I do not know
- I choose not to answer this question

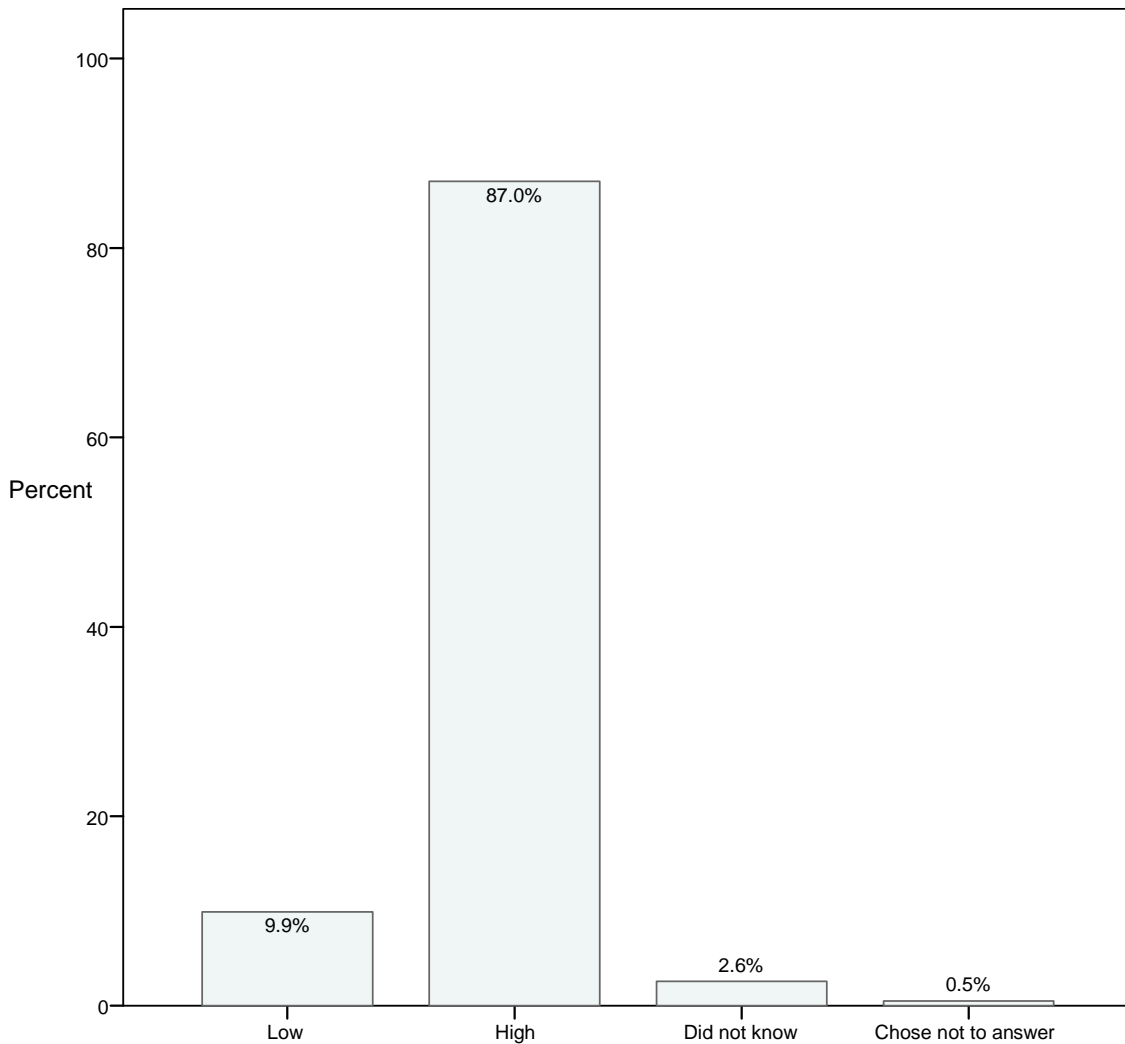
Table 9

Internet connection

		Frequency	Percent	Valid Percent	Cumulative Percent
Valid	Low	648	9.9	9.9	9.9
	High	5688	86.8	87.0	97.0
	Did not know	168	2.6	2.6	99.5
	Chose not to answer	31	0.5	0.5	100.0
	Total	6535	99.8	100.0	
Missing data*		16	0.2		
Total		6551	100.0		

* Missing data – refers to surveys collected in which no answers were provided for this specific question.

Figure 9. Internet connection type



10. Please describe your level of experience with SLN/CourseSpace courses, this was my...

- First SLN/CS course
- Second SLN/CS course
- Third SLN/CS course
- Fourth SLN/CS course
- Fifth+ SLN/CS course
- I choose not to answer this question

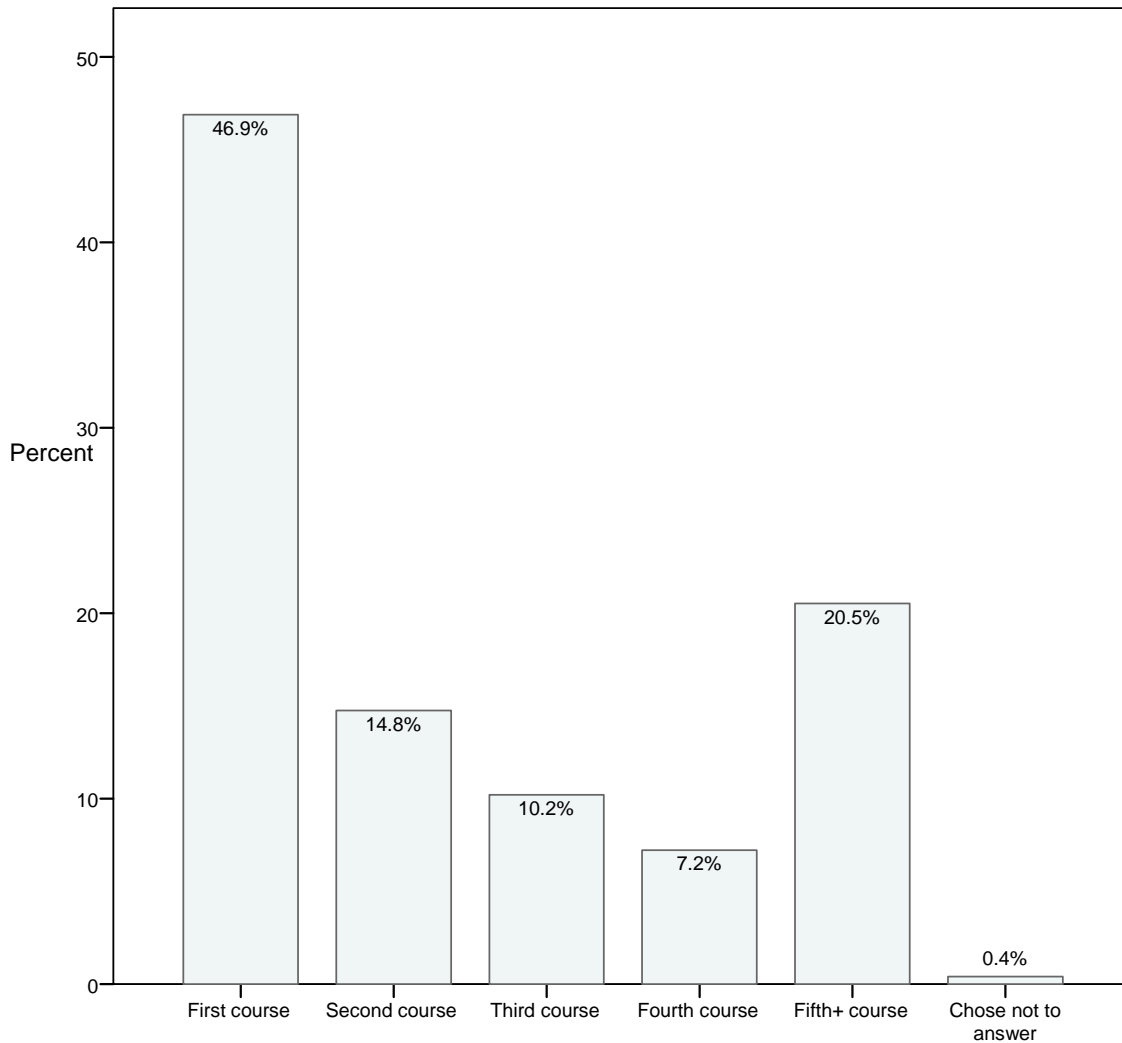
Table 10

Level of experience with SLN or CourseSpace

		Frequency	Percent	Valid Percent	Cumulative Percent
Valid	First course	3070	46.9	46.9	46.9
	Second course	966	14.7	14.8	61.6
	Third course	668	10.2	10.2	71.8
	Fourth course	473	7.2	7.2	79.1
	Fifth+ course	1344	20.5	20.5	99.6
	Chose not to answer	27	0.4	0.4	100.0
	Total	6548	100.0	100.0	
Missing data*		3	0.0		
Total		6551	100.0		

* Missing data – refers to surveys collected in which no answers were provided for this specific question.

Figure 10. Level of experience with SLN/CourseSpace courses



11. What was your level of personal computer skills before enrolling in this course?

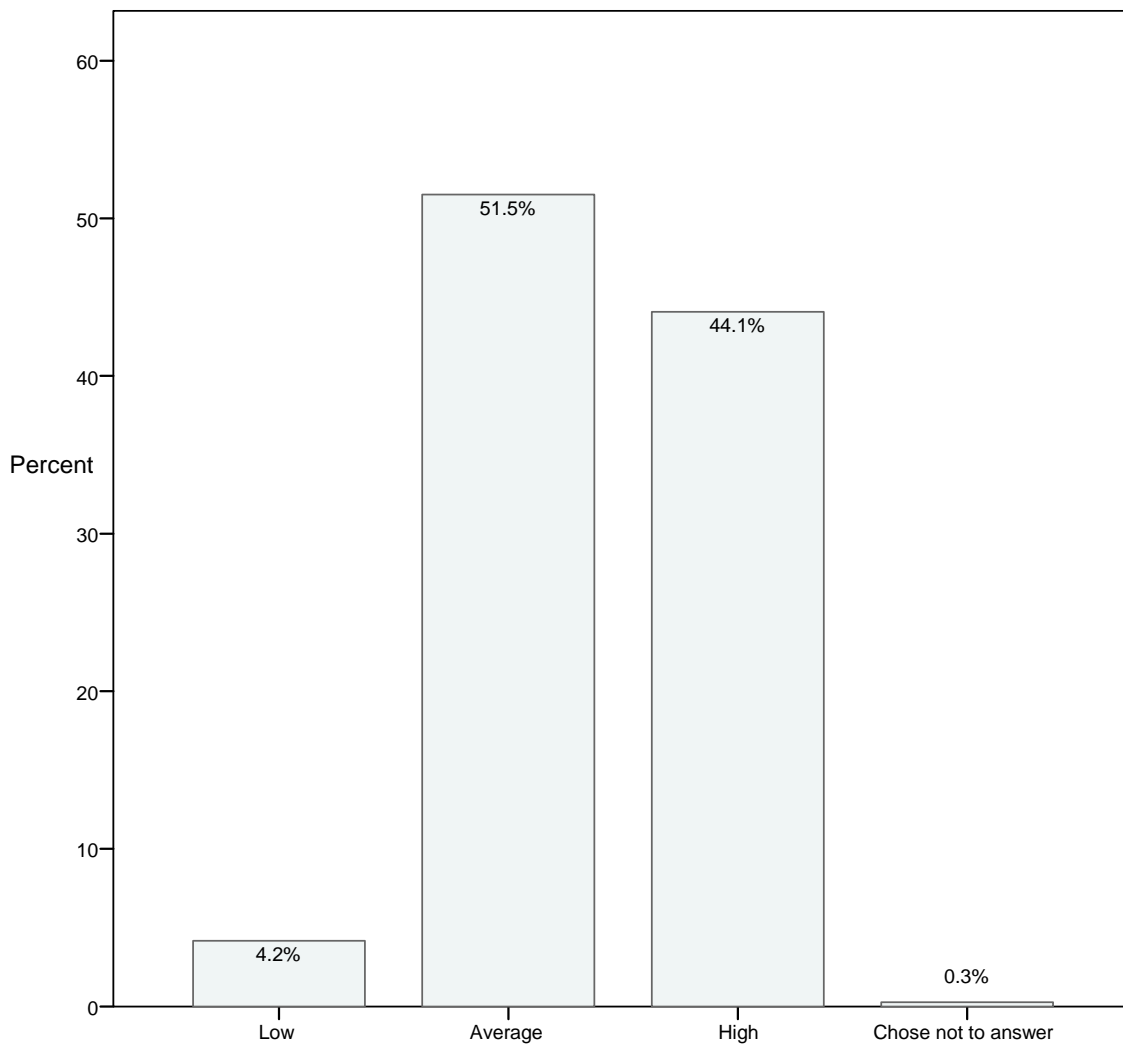
- Low
- Medium
- High
- I choose not to answer this question

Table 11

Level of personal computer skills prior to enrolling in course

	Frequency	Percent	Valid Percent	Cumulative Percent
Low	273	4.2	4.2	4.2
Average	3374	51.5	51.5	55.7
High	2887	44.1	44.1	99.7
Chose not to answer	17	0.3	0.3	100.0
Total	6551	100.0	100.0	

Figure 11. Level of personal computer skills prior to course



12. Was this course offered via SLN (i.e., did you take this course in a completely online format) or was it a classroom-based course utilizing CourseSpace online enhancements?

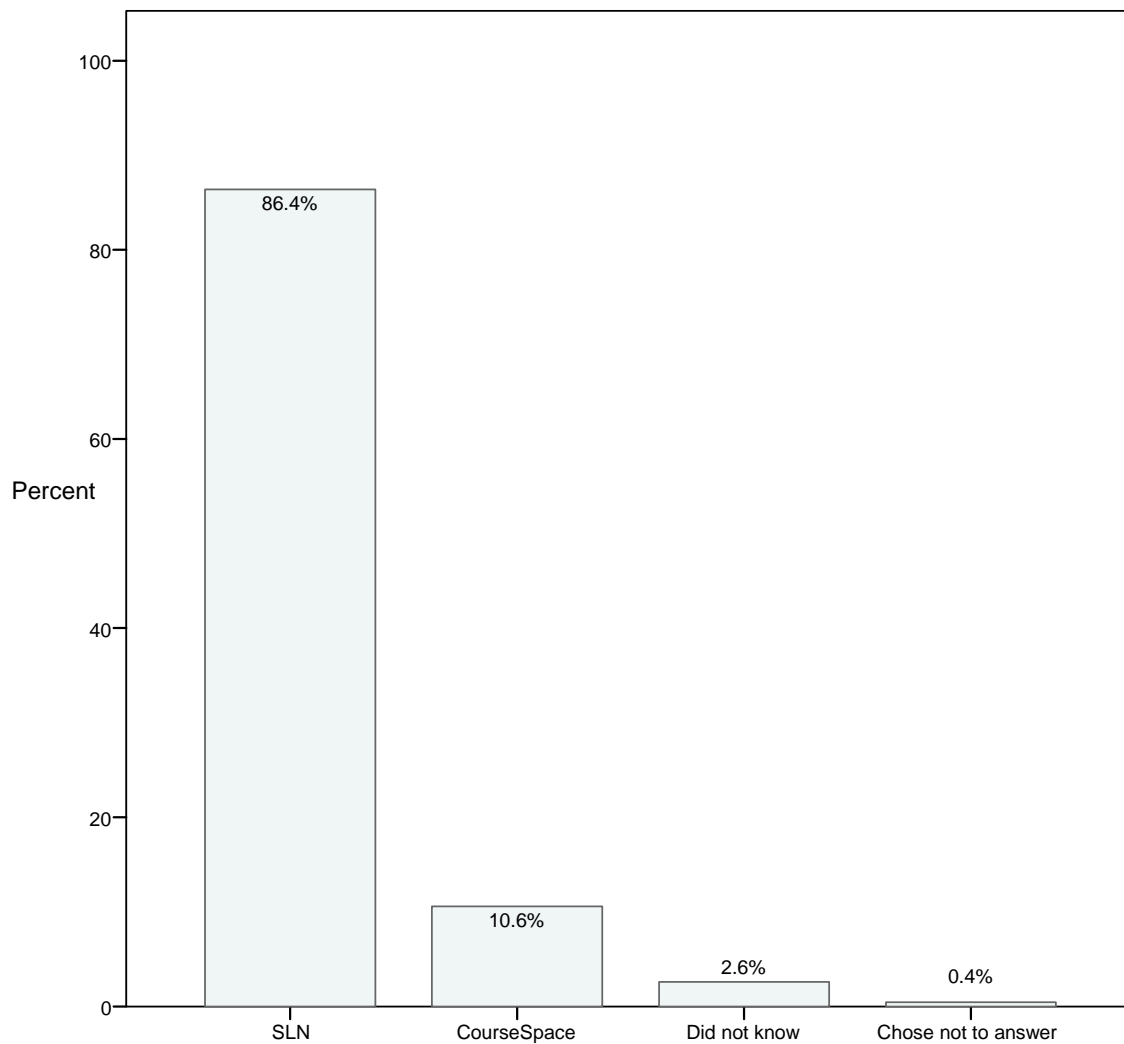
- SLN (completely online)
- CourseSpace (classroom-based course with web enhancements)
- I do not know
- I choose not to answer this question

Table 12

SLN or CourseSpace enrollment

	Frequency	Percent	Valid Percent	Cumulative Percent
SLN	5659	86.4	86.4	86.4
CourseSpace	693	10.6	10.6	97.0
Did not know	170	2.6	2.6	99.6
Chose not to answer	29	0.4	0.4	100.0
Total	6551	100.0	100.0	

Figure 12. Course offered via SLN or CourseSpace medium



12a. Was this a blended/hybrid course?

- Yes
- No
- I choose not to answer this question

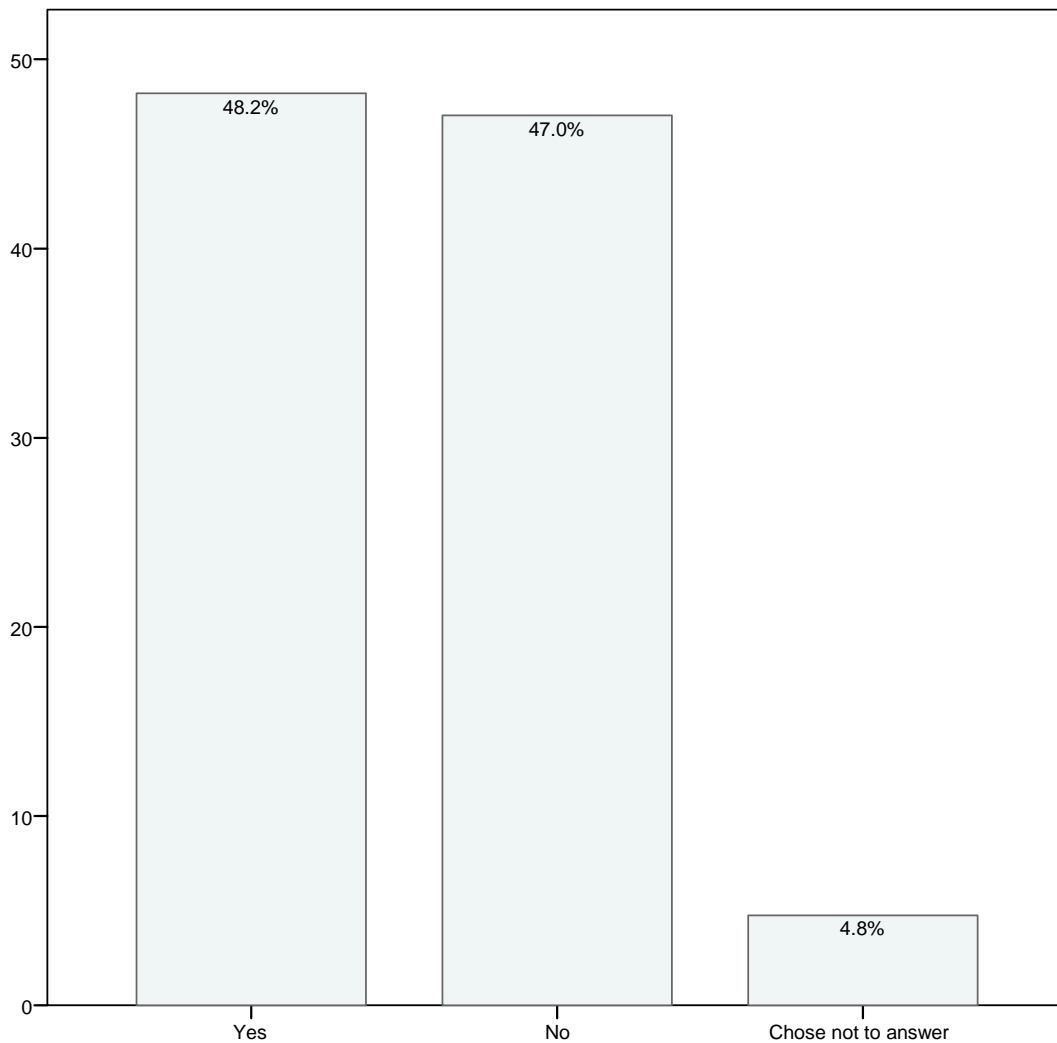
Table 12a

Blended / hybrid course

		Frequency	Percent	Valid Percent	Cumulative Percent
Valid	Yes	334	5.1	48.2	48.2
	No	326	5.0	47.0	95.2
	Chose not to answer	33	0.5	4.8	100.0
	Total	693	10.6	100.0	
Missing data*		5858	89.4		
Total		6551	100.0		

* Missing data – represents SLN students that were not asked to complete survey item 12a.

Figure 12a. Blended / hybrid course



13. What is your main reason for choosing to take courses in an online format?

- Conflicting family responsibilities
- Conflicting work responsibilities
- Course was not available in the classroom
- Course scheduling conflict
- Lack of transportation
- Distance from campus
- Interest in technology/the internet
- Other

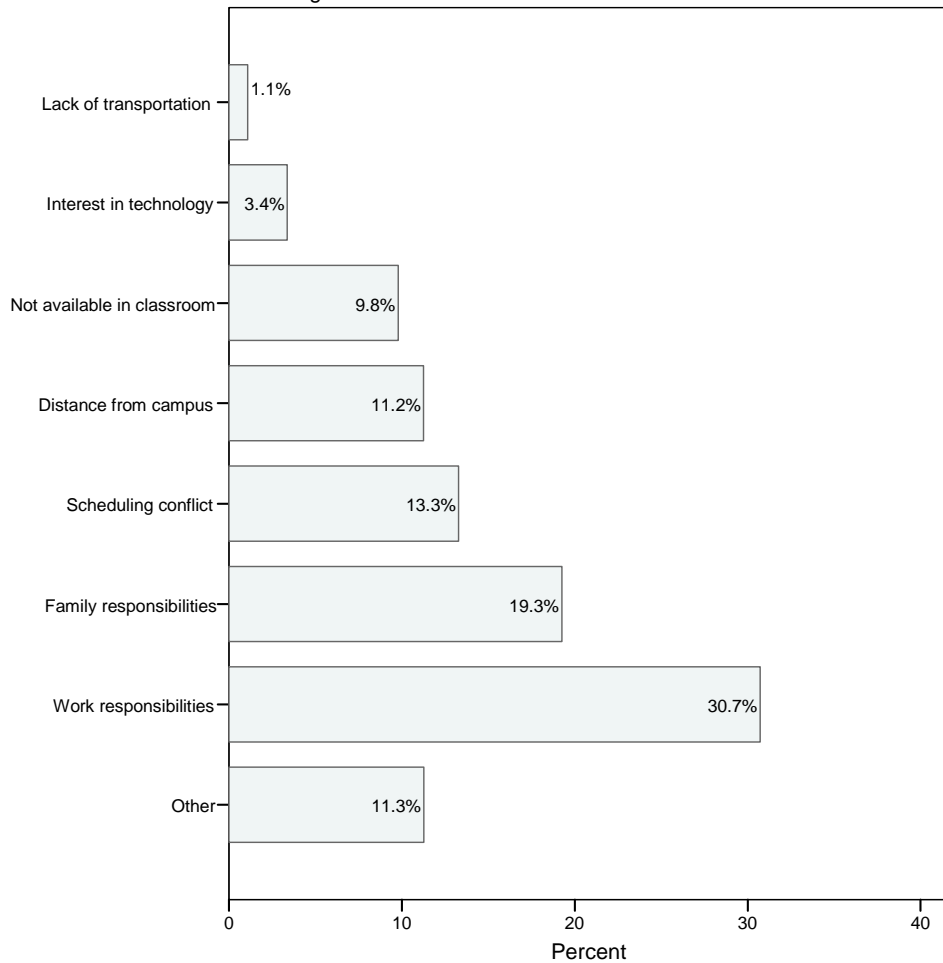
Table 13

Primary reason for choosing online format

		Frequency	Percent	Valid Percent	Cumulative Percent
Valid	Family responsibilities	1128	17.2	19.3	19.3
	Work responsibilities	1800	27.5	30.7	50.0
	Not available in classroom	573	8.7	9.8	59.8
	Scheduling conflict	778	11.9	13.3	73.0
	Lack of transportation	63	1.0	1.1	74.1
	Distance from campus	659	10.1	11.2	85.4
	Interest in technology	197	3.0	3.4	88.7
	Other	660	10.1	11.3	100.0
	Total	5858	89.4	100.0	
Missing data*		693	10.6		
Total		6551	100.0		

* Missing data – represents CourseSpace students that were not asked to complete survey items 13-17.

Figure 13. Main reason for choosing to take online courses



14. If this course was not available from your college in an online format what would you do?

- I would take the same course in the classroom at my current college
- I would take the same course in the classroom at a different college
- I would take an equivalent online course from another college
- I would not take the course
- Other

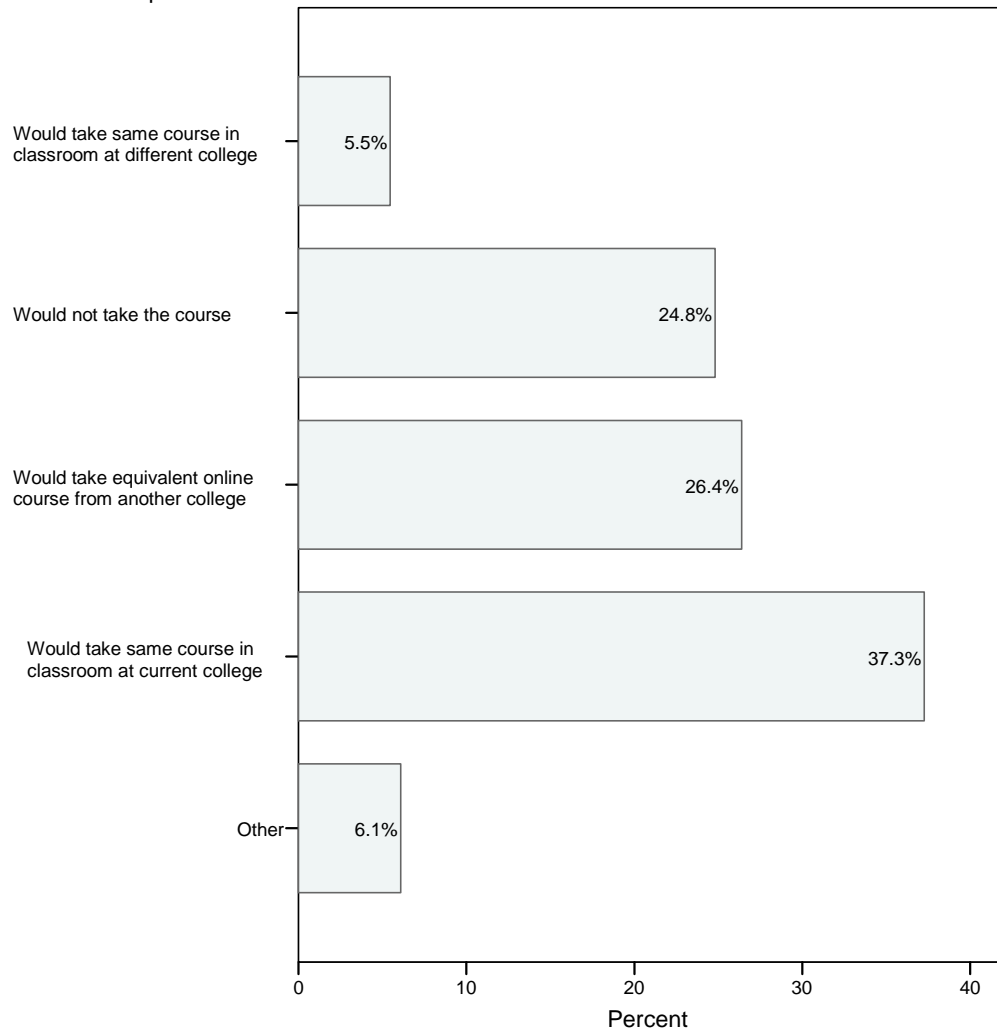
Table 14

Other options if online course was not offered

		Frequency	Percent	Valid Percent	Cumulative Percent
Valid	Would take same course in classroom at current college	2183	33.3	37.3	37.3
	Would take same course in classroom at different college	320	4.9	5.5	42.7
	Would take equivalent online course from another college	1546	23.6	26.4	69.1
	Would not take the course	1453	22.2	24.8	93.9
	Other	356	5.4	6.1	100.0
	Total	5858	89.4	100.0	
Missing data*		693	10.6		
Total		6551	100.0		

* Missing data – represents CourseSpace students that were not asked to complete survey items 13-17.

Figure 14. Other options if online course was not offered



16. Based on your experience, would you consider taking other online courses in the future?

- Yes, as many as possible
- Yes, some additional courses
- Not sure
- Only if absolutely necessary
- No
- I choose not to answer this question

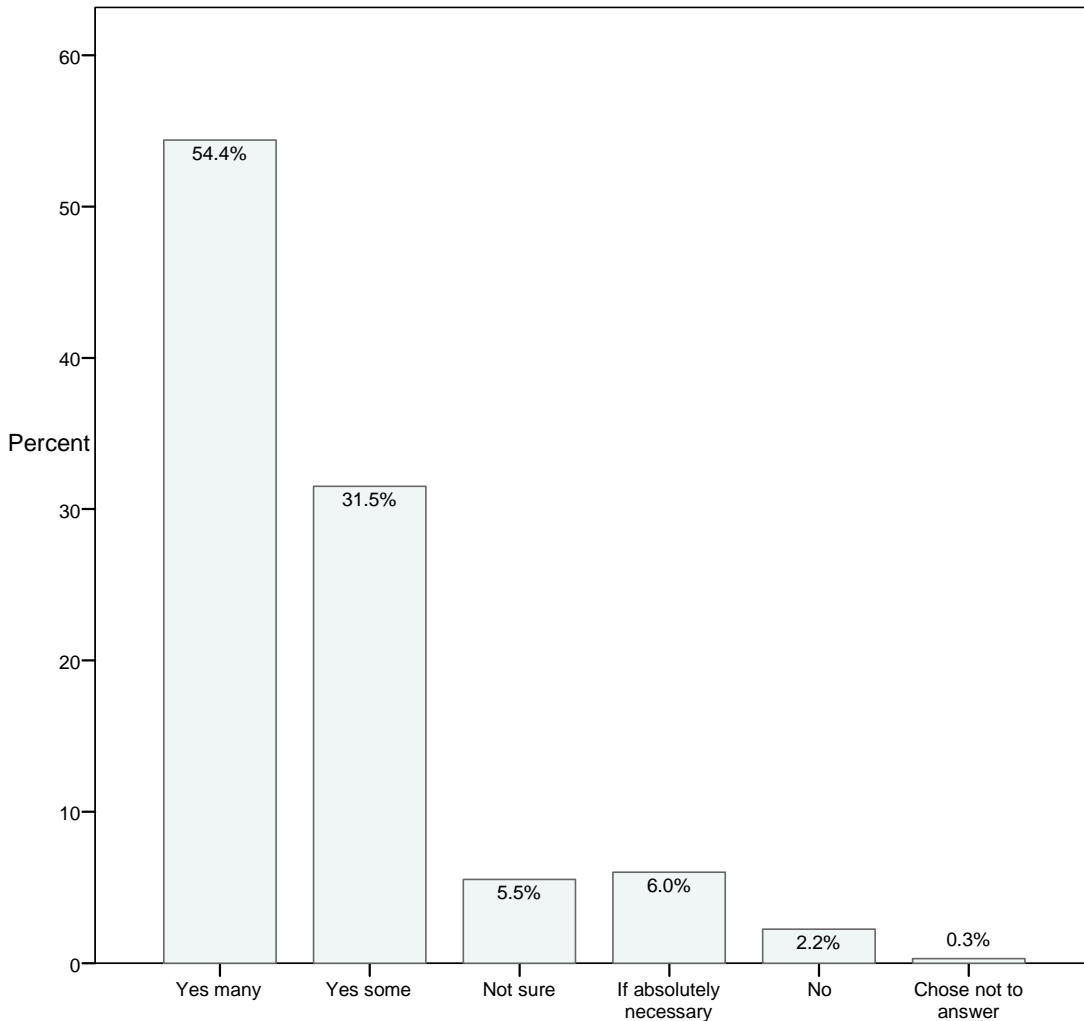
Table 16

Desire to take future online courses

		Frequency	Percent	Valid Percent	Cumulative Percent
Valid	Yes many	3187	48.6	54.4	54.4
	Yes some	1846	28.2	31.5	85.9
	Not sure	324	4.9	5.5	91.4
	If absolutely necessary	352	5.4	6.0	97.5
	No	131	2.0	2.2	99.7
	Chose not to answer	18	0.3	0.3	100.0
	Total	5858	89.4	100.0	
Missing data*		693	10.6		
Total		6551	100.0		

* Missing data – represents CourseSpace students that were not asked to complete survey items 13-17.

Figure 16. Desire to take future online courses



17. Are you planning to complete your entire degree online?

- Yes
- Not sure
- No
- I choose not to answer this question

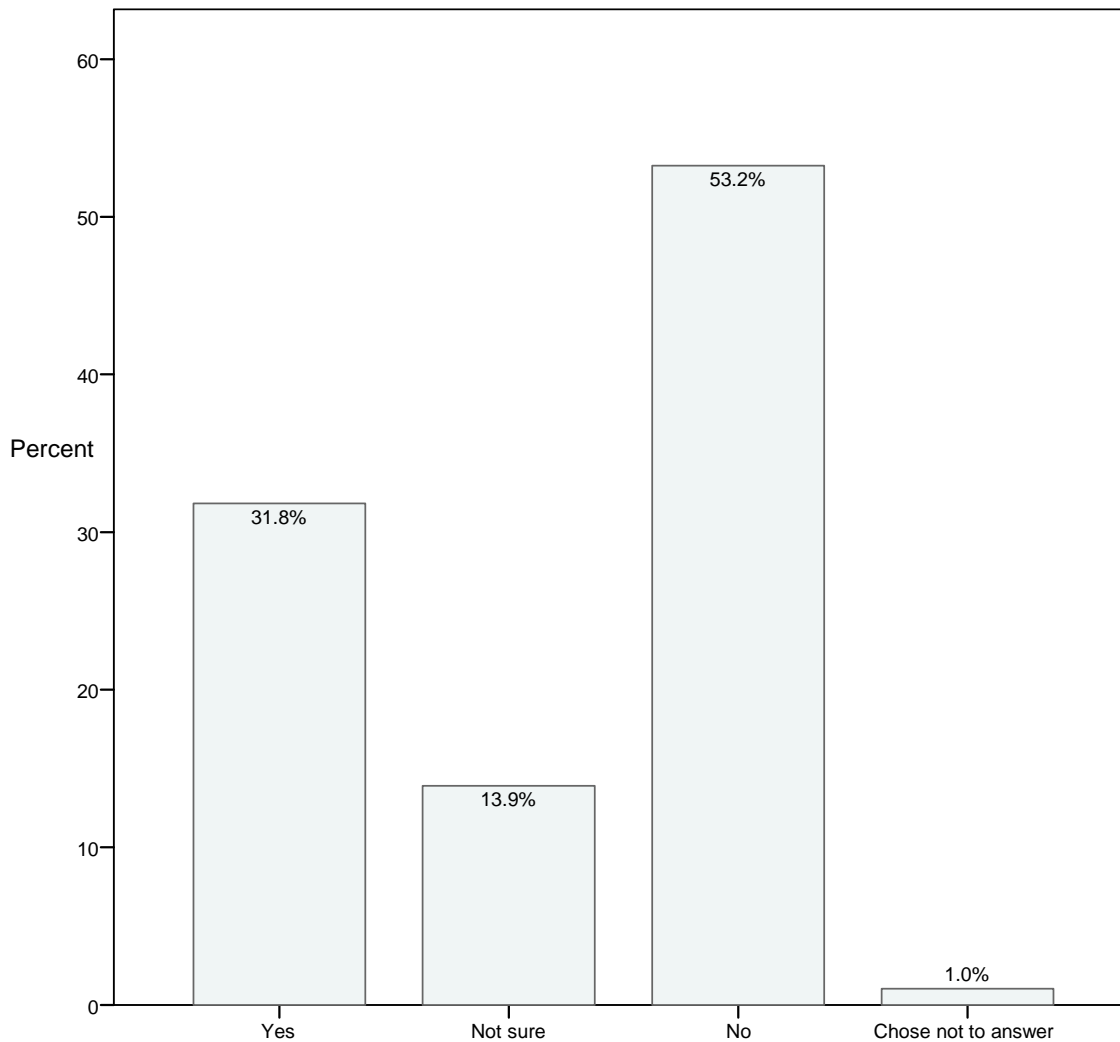
Table 17

Planning to complete entire degree online

		Frequency	Percent	Valid Percent	Cumulative Percent
Valid	Yes	1864	28.5	31.8	31.8
	Not sure	814	12.4	13.9	45.7
	No	3119	47.6	53.2	99.0
	Chose not to answer	61	0.9	1.0	100.0
	Total	5858	89.4	100.0	
Missing data*		693	10.6		
Total		6551	100.0		

* Missing data – represents CourseSpace students that were not asked to complete survey items 13-17.

Figure 17. Planning to complete entire degree online



Section III. Items 18-23: Student Online Course

18. I was satisfied with this course.

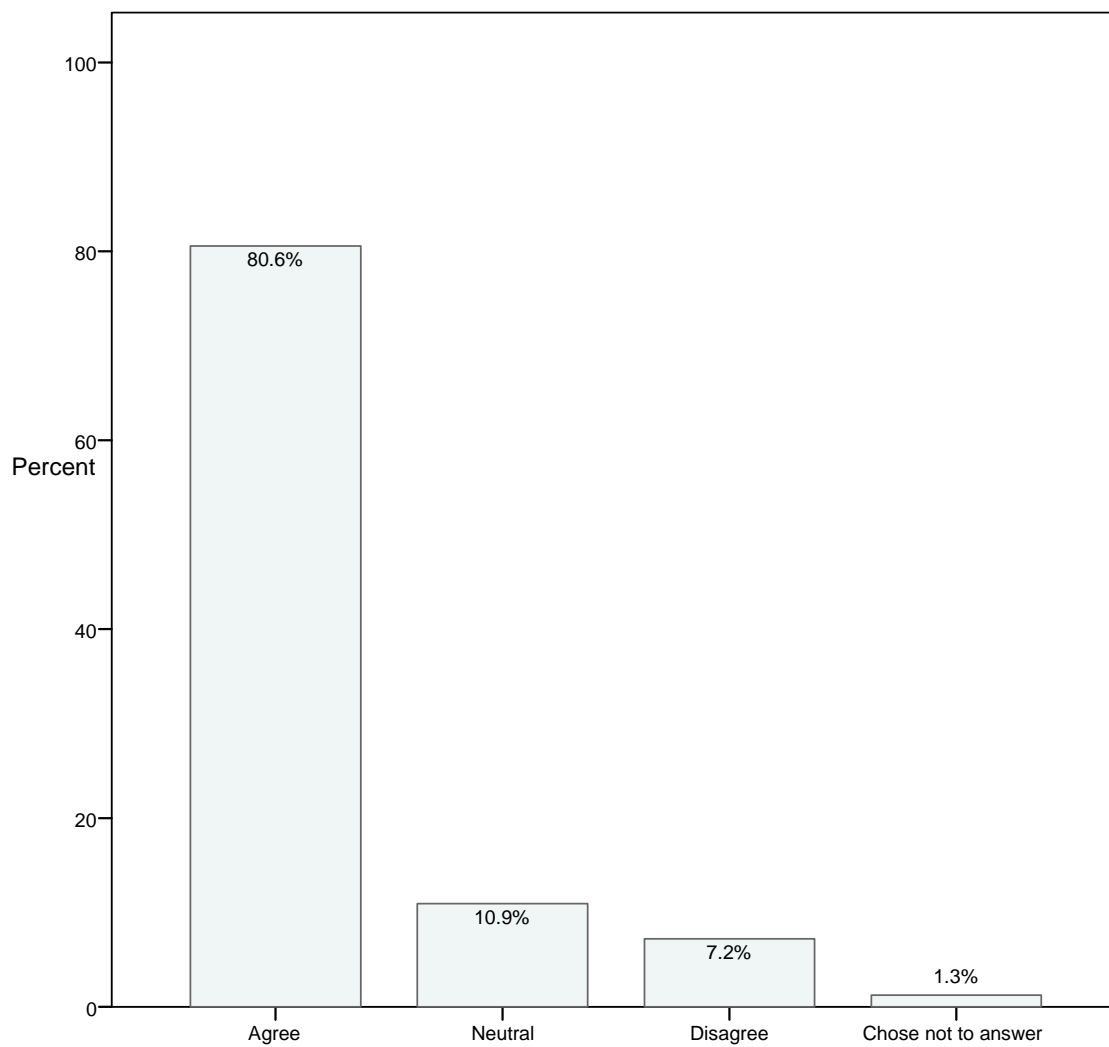
- Strongly Agree
- Agree
- Neutral
- Disagree
- Strongly Disagree
- I choose not to answer this question

Table 18

Course satisfaction

	Frequency	Percent	Valid Percent	Cumulative Percent
Agree	5278	80.6	80.6	80.6
Neutral	717	10.9	10.9	91.5
Disagree	473	7.2	7.2	98.7
Chose not to answer	83	1.3	1.3	100.0
Total	6551	100.0	100.0	

Figure 18. Course satisfaction



19. I learned a great deal in this course.

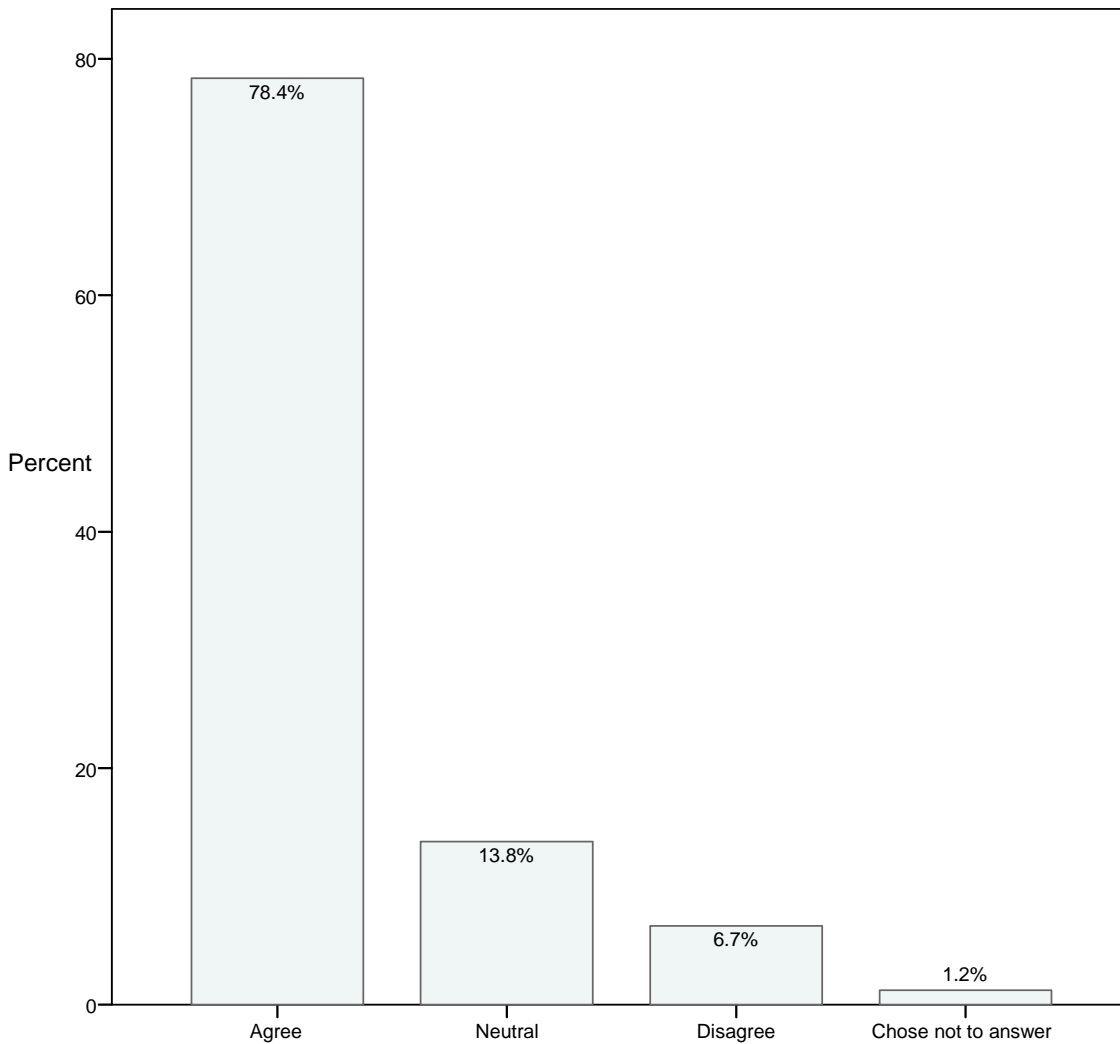
- Strongly Agree
- Agree
- Neutral
- Disagree
- Strongly Disagree
- I choose not to answer this question

Table 19

Perceived learning in course

	Frequency	Percent	Valid Percent	Cumulative Percent
Agree	5133	78.4	78.4	78.4
Neutral	903	13.8	13.8	92.1
Disagree	436	6.7	6.7	98.8
Chose not to answer	79	1.2	1.2	100.0
Total	6551	100.0	100.0	

Figure 19. Perceived learning in course



20. I had a great deal of interaction with my instructor for this course. (Interaction includes activities such as initiating comments and questions, as well as responding to your instructor's comments, questions, etc.).

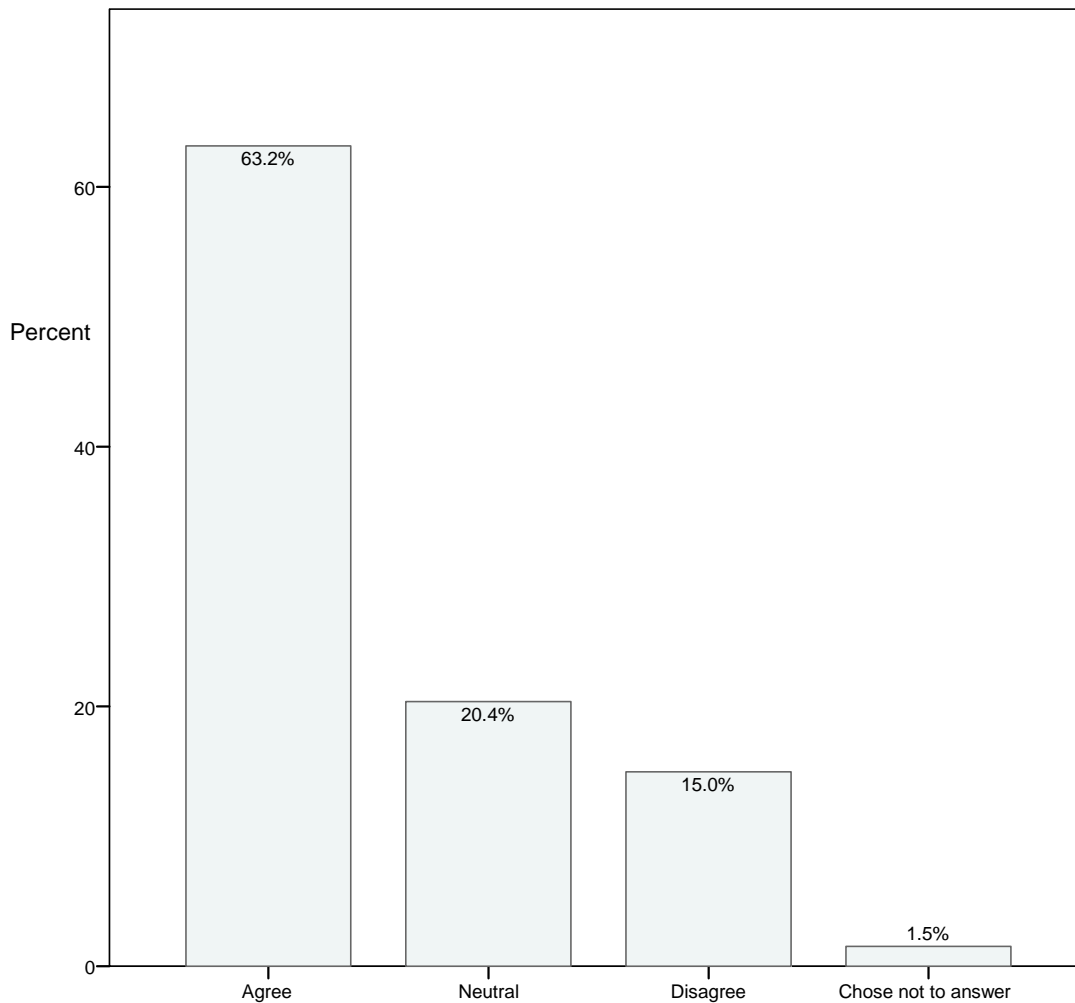
- Strongly Agree
- Agree
- Neutral
- Disagree
- Strongly Disagree
- I choose not to answer this question

Table 20

Interaction with course instructor

	Frequency	Percent	Valid Percent	Cumulative Percent
Agree	4138	63.2	63.2	63.2
Neutral	1334	20.4	20.4	83.5
Disagree	980	15.0	15.0	98.5
Chose not to answer	99	1.5	1.5	100.0
Total	6551	100.0	100.0	

Figure 20. Interaction with course instructor



21. The quality of interaction with my instructor was very high in this course.

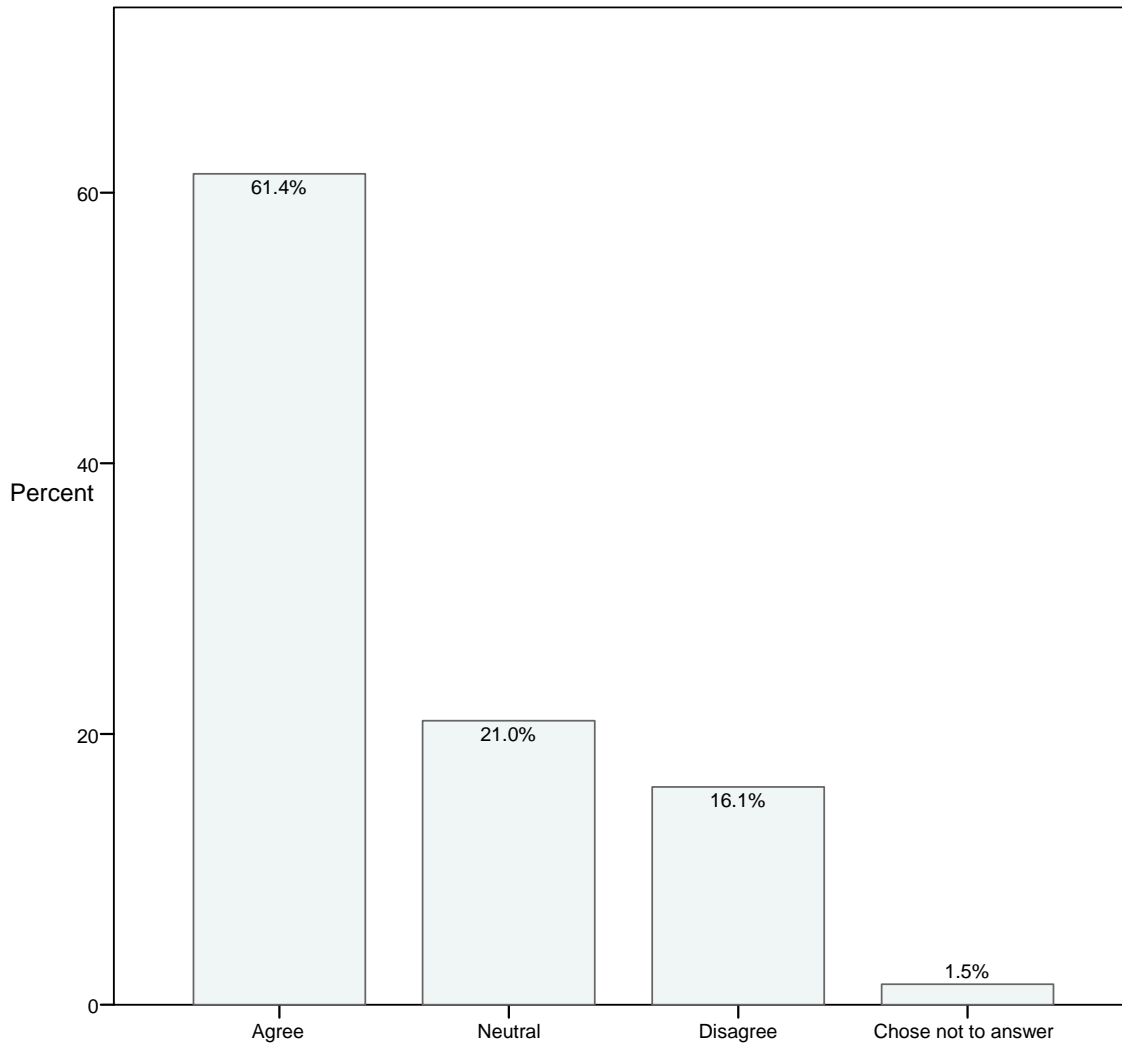
- Strongly Agree
- Agree
- Neutral
- Disagree
- Strongly Disagree
- I choose not to answer this question

Table 21

High quality of interaction with course instructor

	Frequency	Percent	Valid Percent	Cumulative Percent
Agree	4022	61.4	61.4	61.4
Neutral	1375	21.0	21.0	82.4
Disagree	1054	16.1	16.1	98.5
Chose not to answer	100	1.5	1.5	100.0
Total	6551	100.0	100.0	

Figure 21. Quality of interaction with instructor



22. I had a great deal of interaction with my fellow classmates in this course. (Interaction includes activities such as initiating comments and questions, as well as responding to your classmates' comments, questions, etc.).

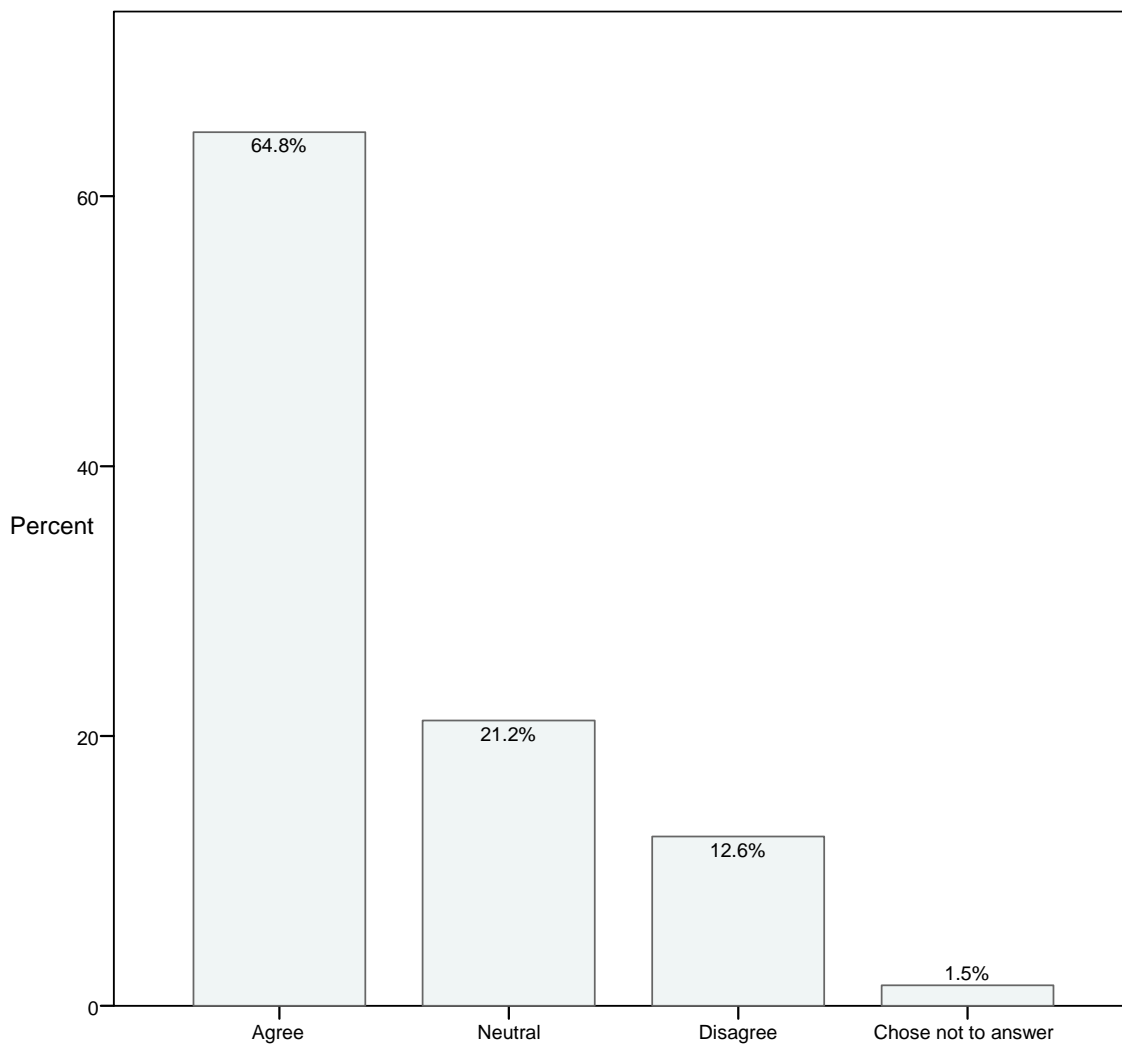
- Strongly Agree
- Agree
- Neutral
- Disagree
- Strongly Disagree
- I choose not to answer this question

Table 22

Interaction with classmates

	Frequency	Percent	Valid Percent	Cumulative Percent
Agree	4242	64.8	64.8	64.8
Neutral	1386	21.2	21.2	85.9
Disagree	823	12.6	12.6	98.5
Chose not to answer	100	1.5	1.5	100.0
Total	6551	100.0	100.0	

Figure 22. Interaction with fellow classmates



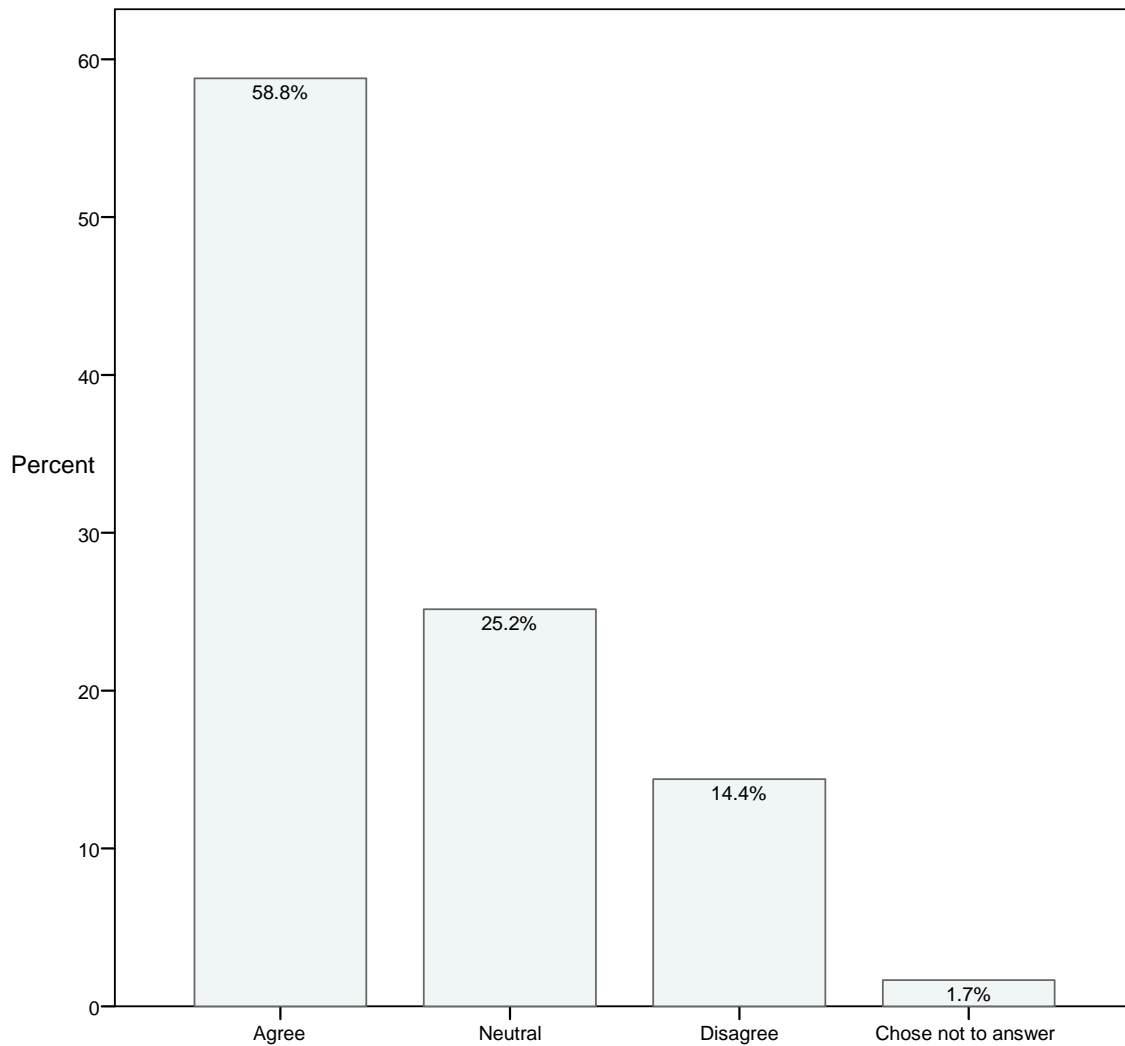
23. The quality of interaction with my classmates was very high in this course.

- Strongly Agree
- Agree
- Neutral
- Disagree
- Strongly Disagree
- I choose not to answer this question

Table 23

High quality of interaction with classmates

	Frequency	Percent	Valid Percent	Cumulative Percent
Agree	3851	58.8	58.8	58.8
Neutral	1648	25.2	25.2	83.9
Disagree	943	14.4	14.4	98.3
Chose not to answer	109	1.7	1.7	100.0
Total	6551	100.0	100.0	

Figure 23. Quality of interaction with classmates

Section IV. Student Views of Course Instructor

Items 24-27: Overall the instructor for this course...

24. was prompt in providing feedback on assignments.

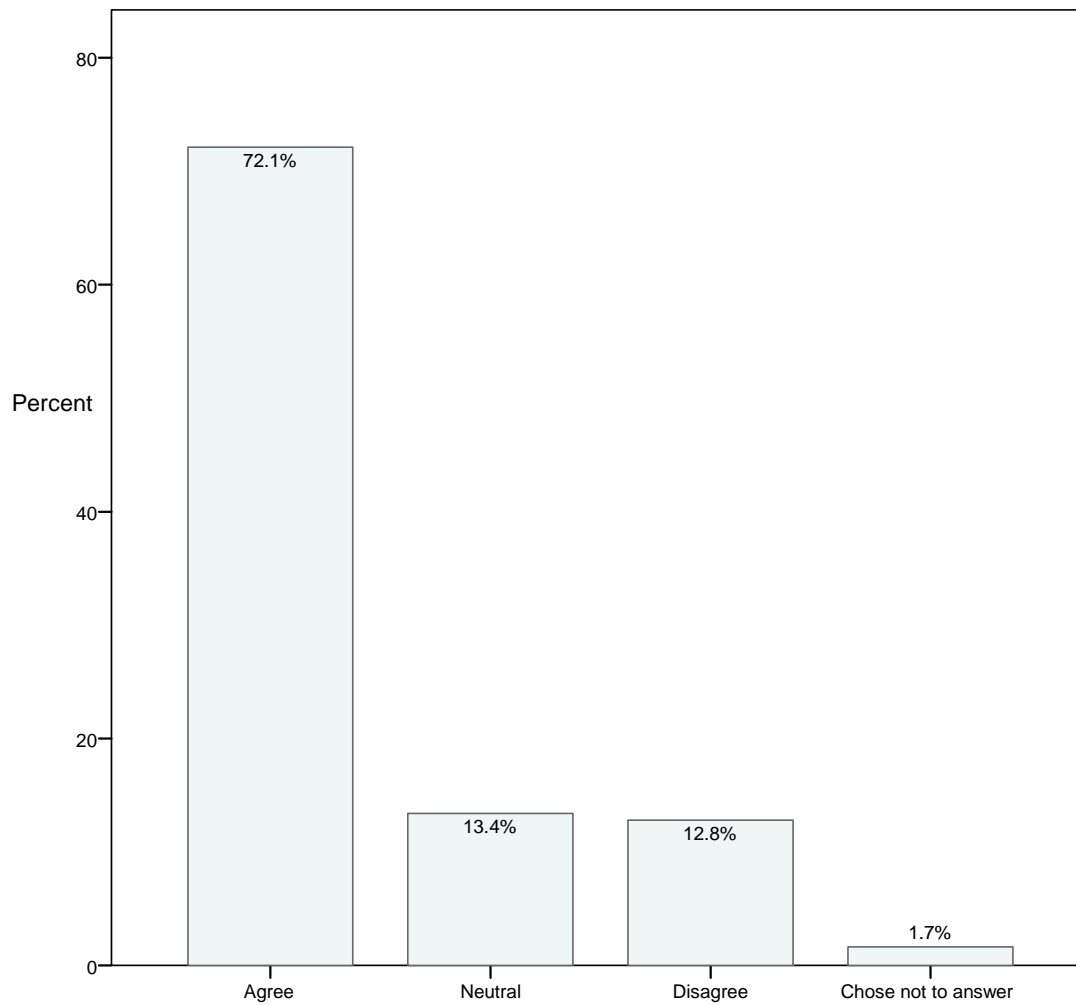
- Strongly Agree
- Agree
- Neutral
- Disagree
- Strongly Disagree
- I choose not to answer this question

Table 24

Instructor gave prompt feedback

	Frequency	Percent	Valid Percent	Cumulative Percent
Agree	4724	72.1	72.1	72.1
Neutral	878	13.4	13.4	85.5
Disagree	840	12.8	12.8	98.3
Chose not to answer	109	1.7	1.7	100.0
Total	6551	100.0	100.0	

Figure 24. Instructor gave prompt feedback



Overall the instructor for this course...

25. Provided constructive feedback on assignments.

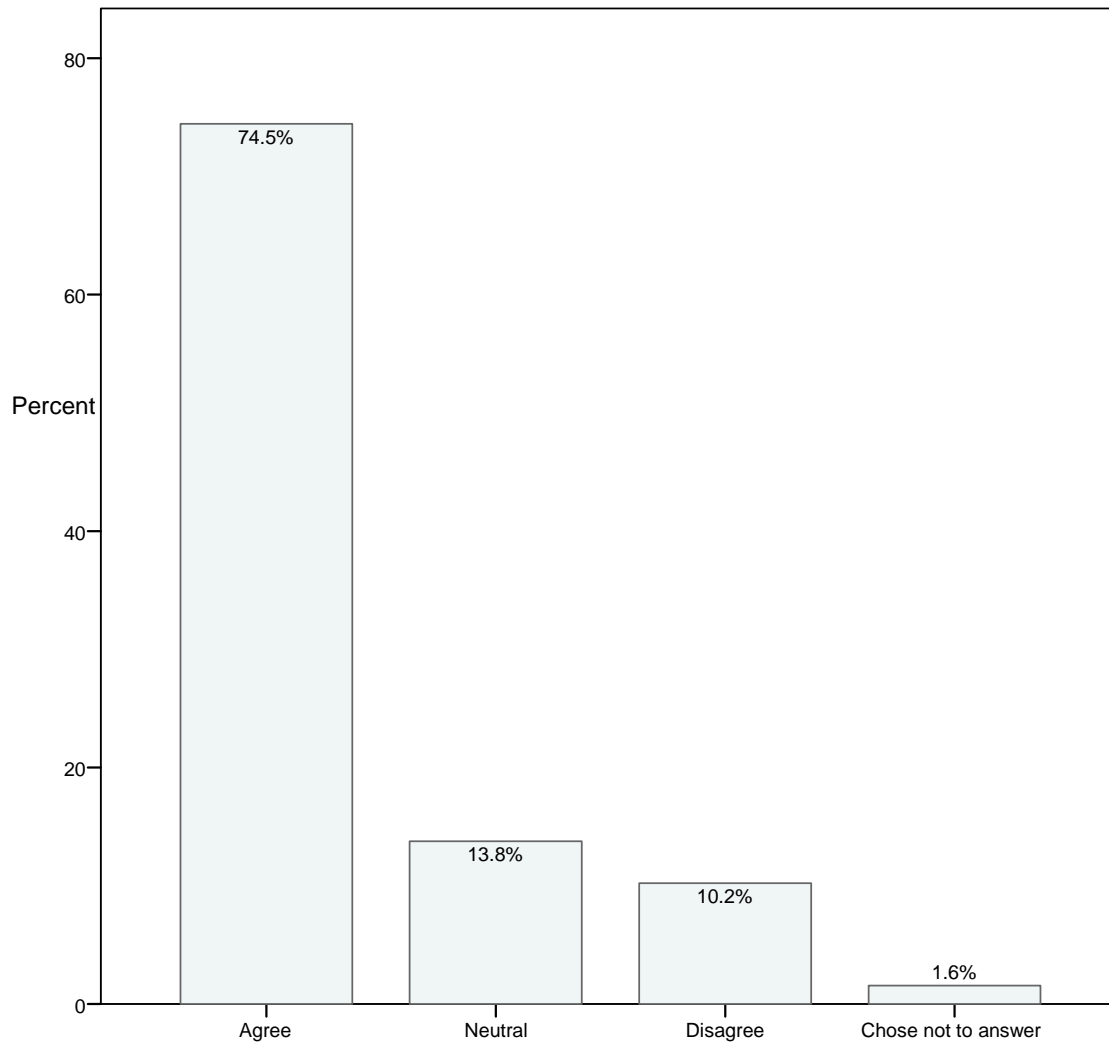
- Strongly Agree
- Agree
- Neutral
- Disagree
- Strongly Disagree
- I choose not to answer this question

Table 25

Instructor provided constructive feedback

	Frequency	Percent	Valid Percent	Cumulative Percent
Agree	4878	74.5	74.5	74.5
Neutral	902	13.8	13.8	88.2
Disagree	669	10.2	10.2	98.4
Chose not to answer	102	1.6	1.6	100.0
Total	6551	100.0	100.0	

Figure 25. Instructor provided constructive feedback



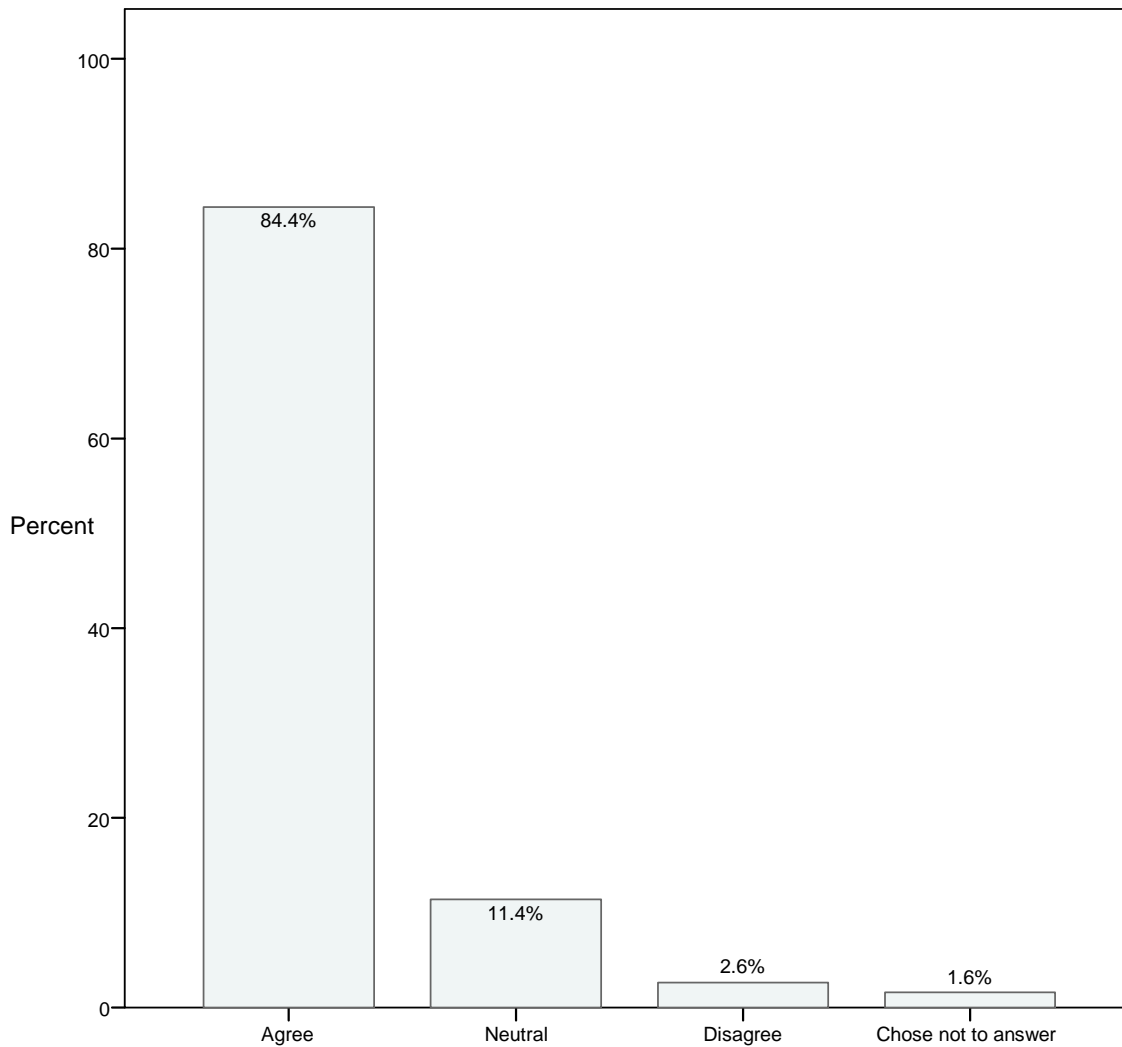
Overall the instructor for this course...**26. Expected high quality work from students in the course.**

- Strongly Agree
- Agree
- Neutral
- Disagree
- Strongly Disagree
- I choose not to answer this question

Table 26

Instructor expected high quality work

	Frequency	Percent	Valid Percent	Cumulative Percent
Agree	5527	84.4	84.4	84.4
Neutral	747	11.4	11.4	95.8
Disagree	172	2.6	2.6	98.4
Chose not to answer	105	1.6	1.6	100.0
Total	6551	100.0	100.0	

Figure 26. Instructor expected high quality work

Overall the instructor for this course...

27. Clearly communicated how students could succeed in the course.

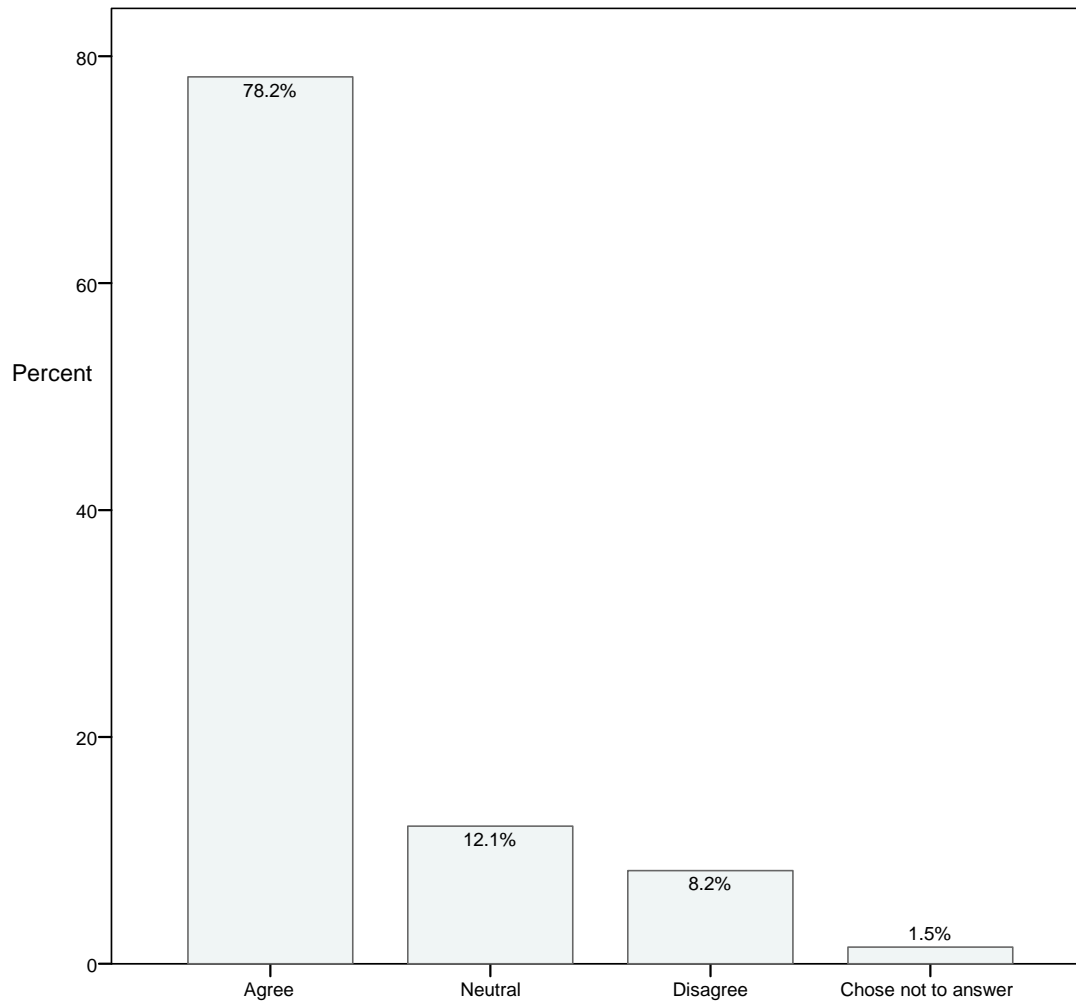
- Strongly Agree
- Agree
- Neutral
- Disagree
- Strongly Disagree
- I choose not to answer this question

Table 27

Instructor clearly communicated how to succeed

	Frequency	Percent	Valid Percent	Cumulative Percent
Agree	5121	78.2	78.2	78.2
Neutral	795	12.1	12.1	90.3
Disagree	538	8.2	8.2	98.5
Chose not to answer	97	1.5	1.5	100.0
Total	6551	100.0	100.0	

Figure 27. Instructor clearly communicated how to succeed



Section V. Comparison of Traditional and Online Courses

Items 28-30: Compared to other similar courses you have taken in the classroom, how would you rate...

28. Your level of interaction with the course instructor for this course? (Interaction includes activities such as initiating comments and questions, as well as responding to your instructor's comments, questions, etc.).

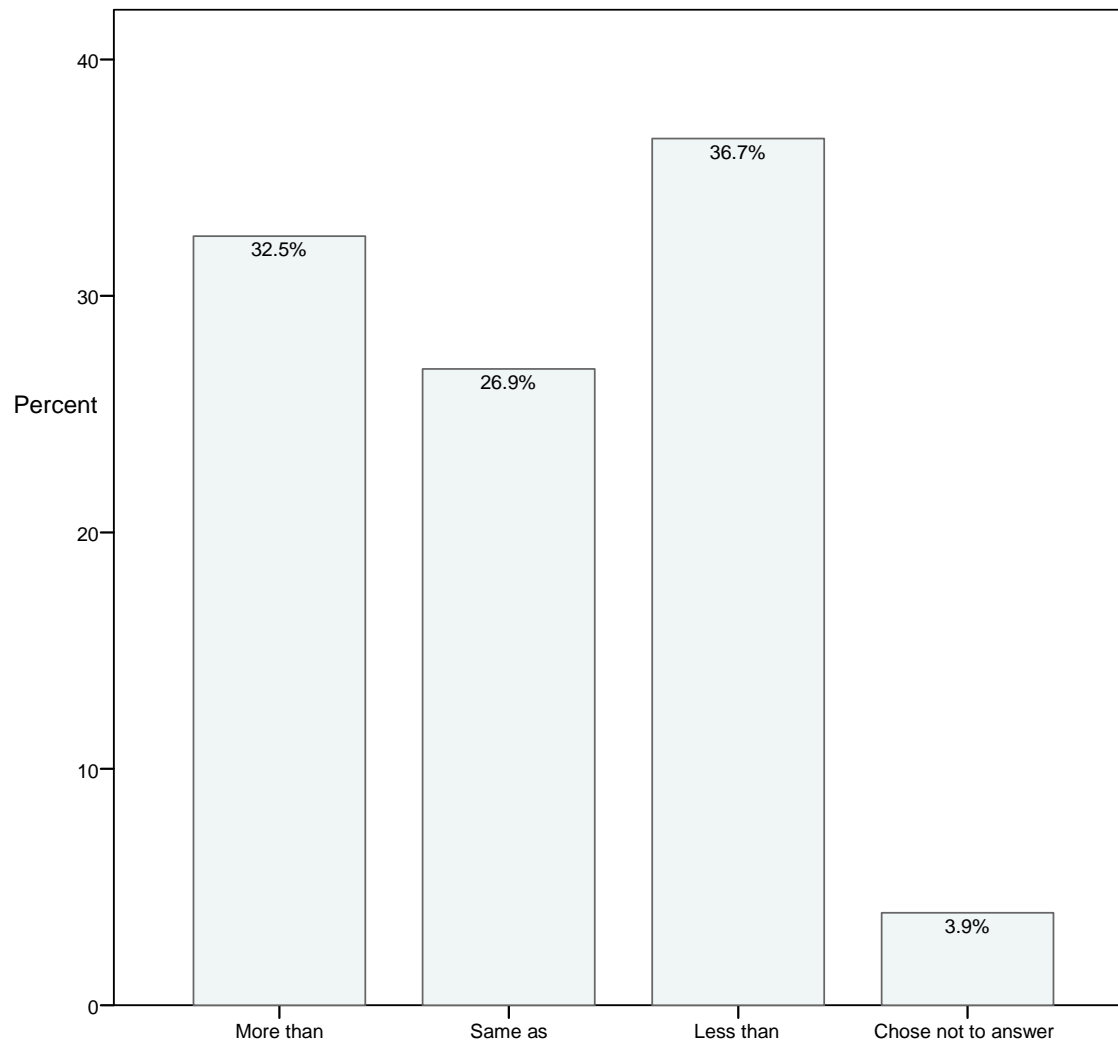
- Much more than in classroom courses
- More than in classroom courses
- The same as in classroom courses
- Less than in classroom courses
- Much less than in classroom courses
- I choose not to answer this question

Table 28

Level of interaction with instructor in comparison to traditional campus based courses

	Frequency	Percent	Valid Percent	Cumulative Percent
More than	2131	32.5	32.5	32.5
Same as	1763	26.9	26.9	59.4
Less than	2401	36.7	36.7	96.1
Chose not to answer	256	3.9	3.9	100.0
Total	6551	100.0	100.0	

Figure 28. Level of interaction with the course instructor



Compared to other similar courses you have taken in the classroom, how would you rate...

29. Your level of interaction with your fellow classmates in this course.

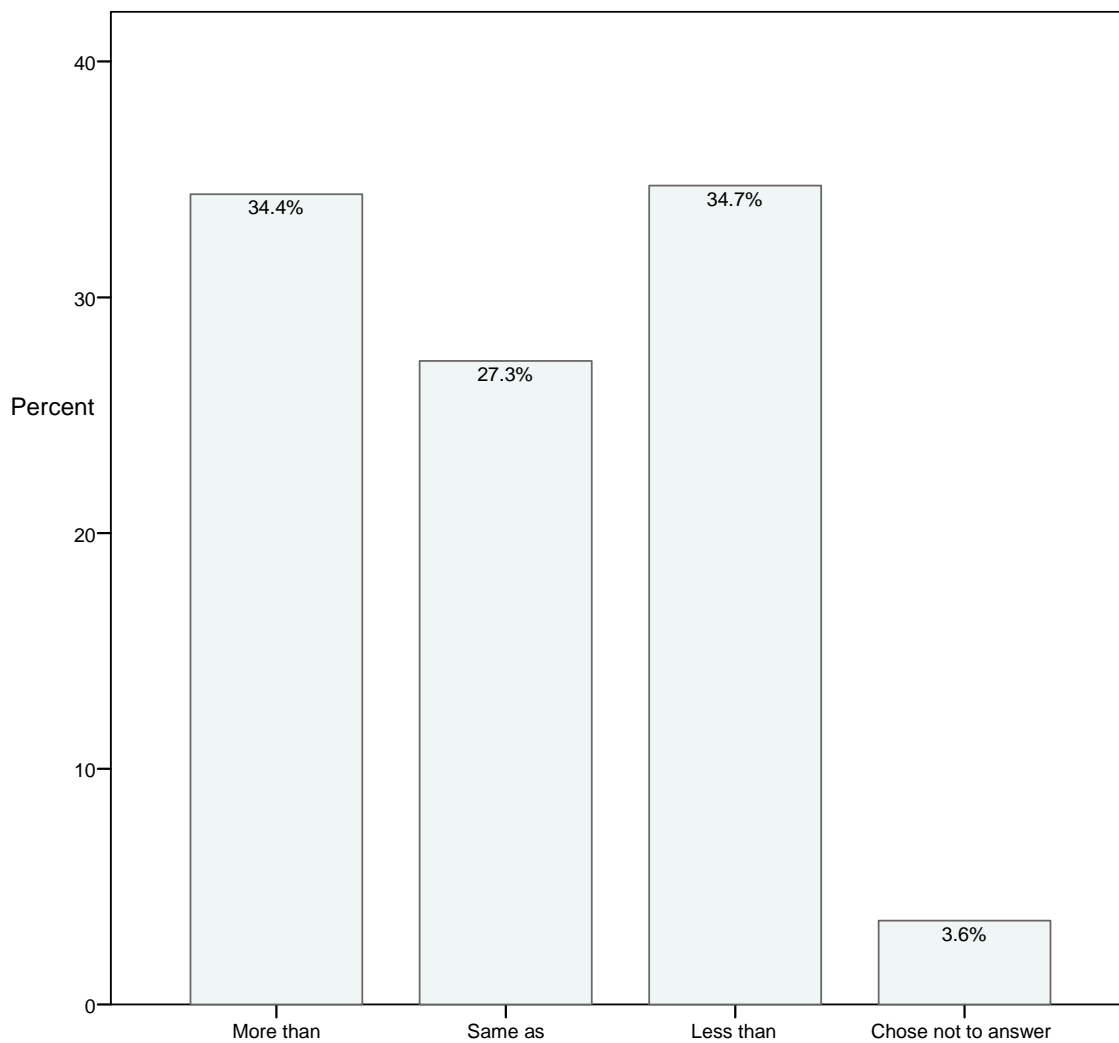
- Much more than in classroom courses
- More than in classroom courses
- The same as in classroom courses
- Less than in classroom courses
- Much less than in classroom courses
- I choose not to answer this question

Table 29

Level of interaction with classmates in comparison to traditional campus based courses

	Frequency	Percent	Valid Percent	Cumulative Percent
More than	2252	34.4	34.4	34.4
Same as	1789	27.3	27.3	61.7
Less than	2276	34.7	34.7	96.4
Chose not to answer	234	3.6	3.6	100.0
Total	6551	100.0	100.0	

Figure 29. Level of interaction with fellow classmates



Compared to other similar courses you have taken in the classroom, how would you rate...

30. Your level of learning in this course?

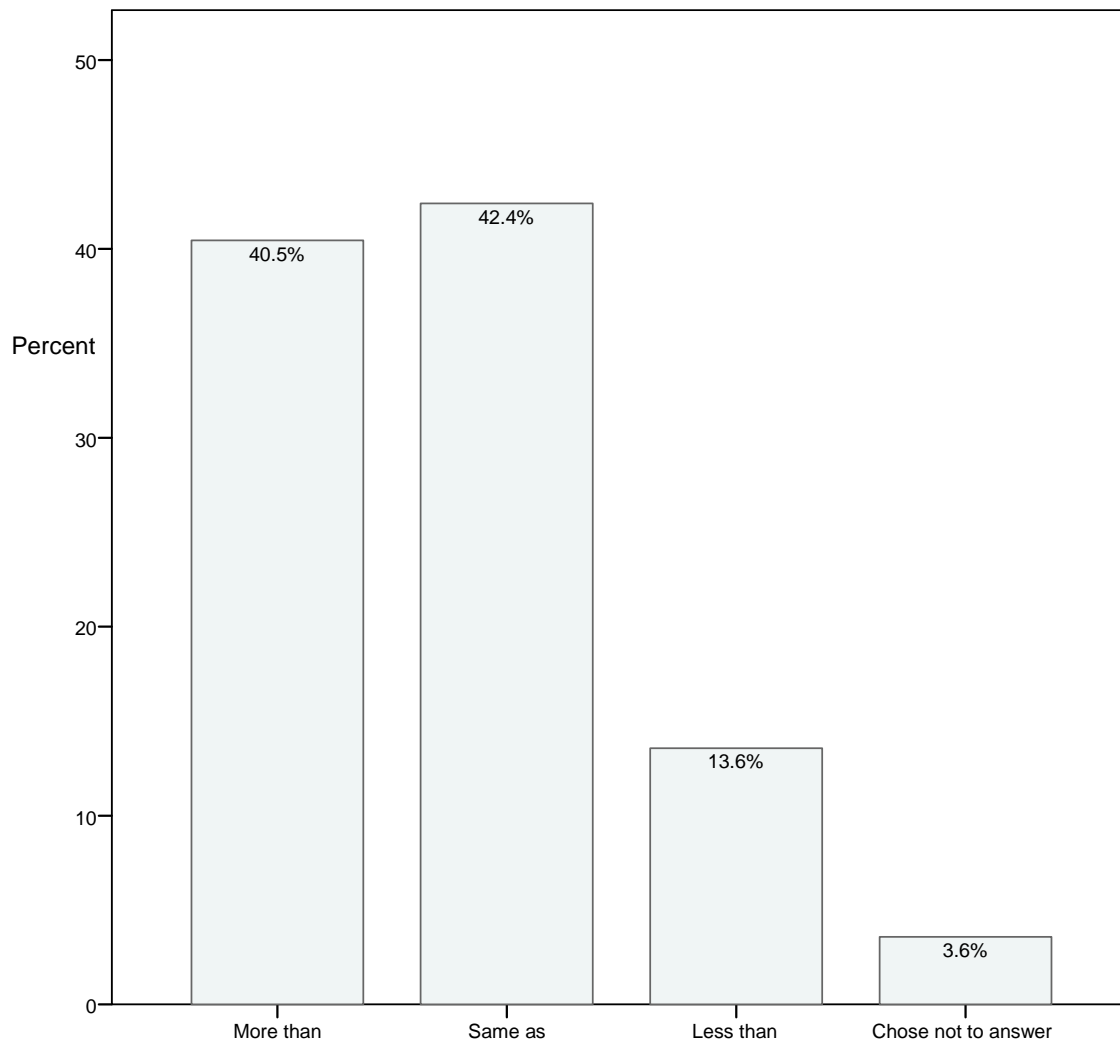
- Much more than in classroom courses
- More than in classroom courses
- The same as in classroom courses
- Less than in classroom courses
- Much less than in classroom courses
- I choose not to answer this question

Table 30

Perceived level of learning in comparison to traditional campus based courses

	Frequency	Percent	Valid Percent	Cumulative Percent
More than	2650	40.5	40.5	40.5
Same as	2778	42.4	42.4	82.9
Less than	889	13.6	13.6	96.4
Chose not to answer	234	3.6	3.6	100.0
Total	6551	100.0	100.0	

Figure 30. Level of learning in course



Section VI. Satisfaction with SLN / CourseSpace Services

31. Overall I was very satisfied with the SUNY Learning Network/ CourseSpace Program.

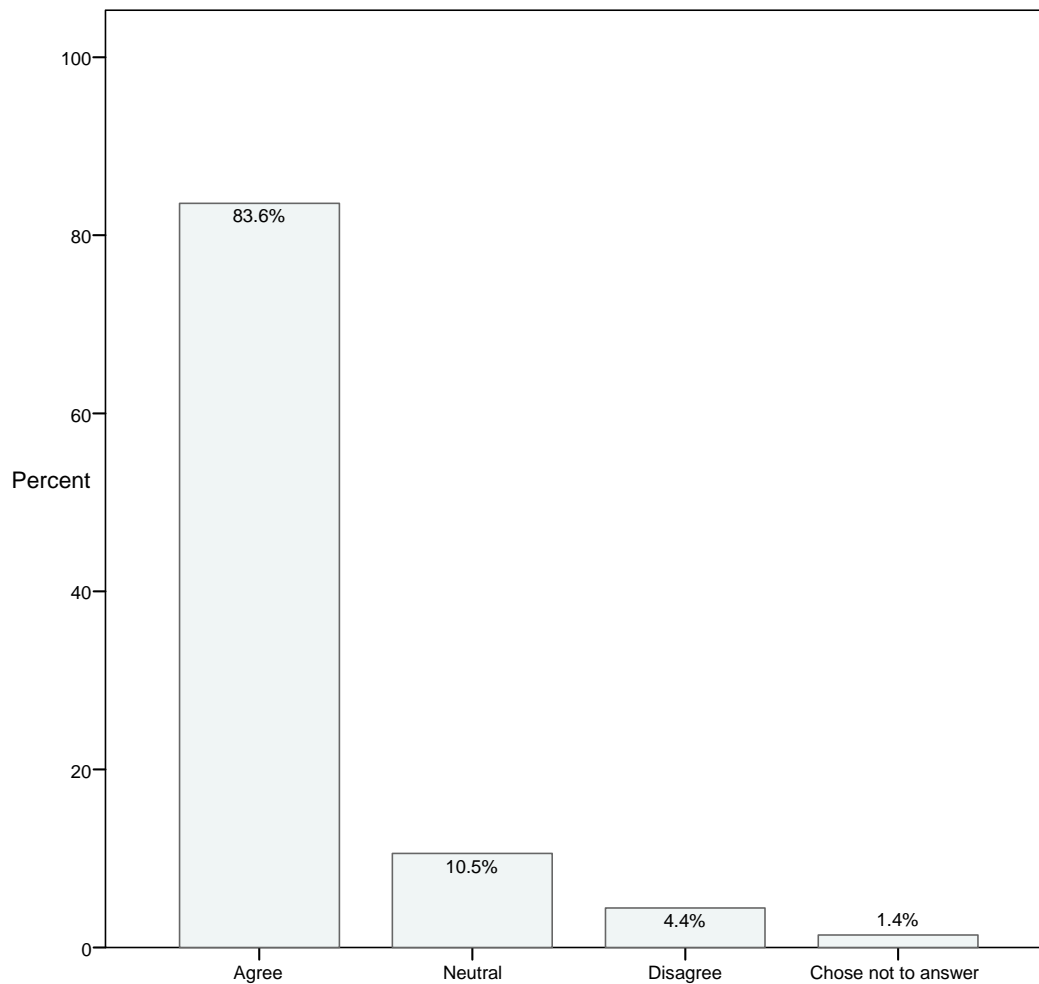
- Strongly Agree
- Agree
- Neutral
- Disagree
- Strongly Disagree
- I choose not to answer this question

Table 31

Satisfaction with SLN / CourseSpace program

	Frequency	Percent	Valid Percent	Cumulative Percent
Agree	5476	83.6	83.6	83.6
Neutral	691	10.5	10.5	94.1
Disagree	291	4.4	4.4	98.6
Chose not to answer	93	1.4	1.4	100.0
Total	6551	100.0	100.0	

Figure 31. Satisfaction with SLN / CourseSpace program



32. Overall I was very satisfied with the technical support available from the SLN/CourseSpace Helpdesk.

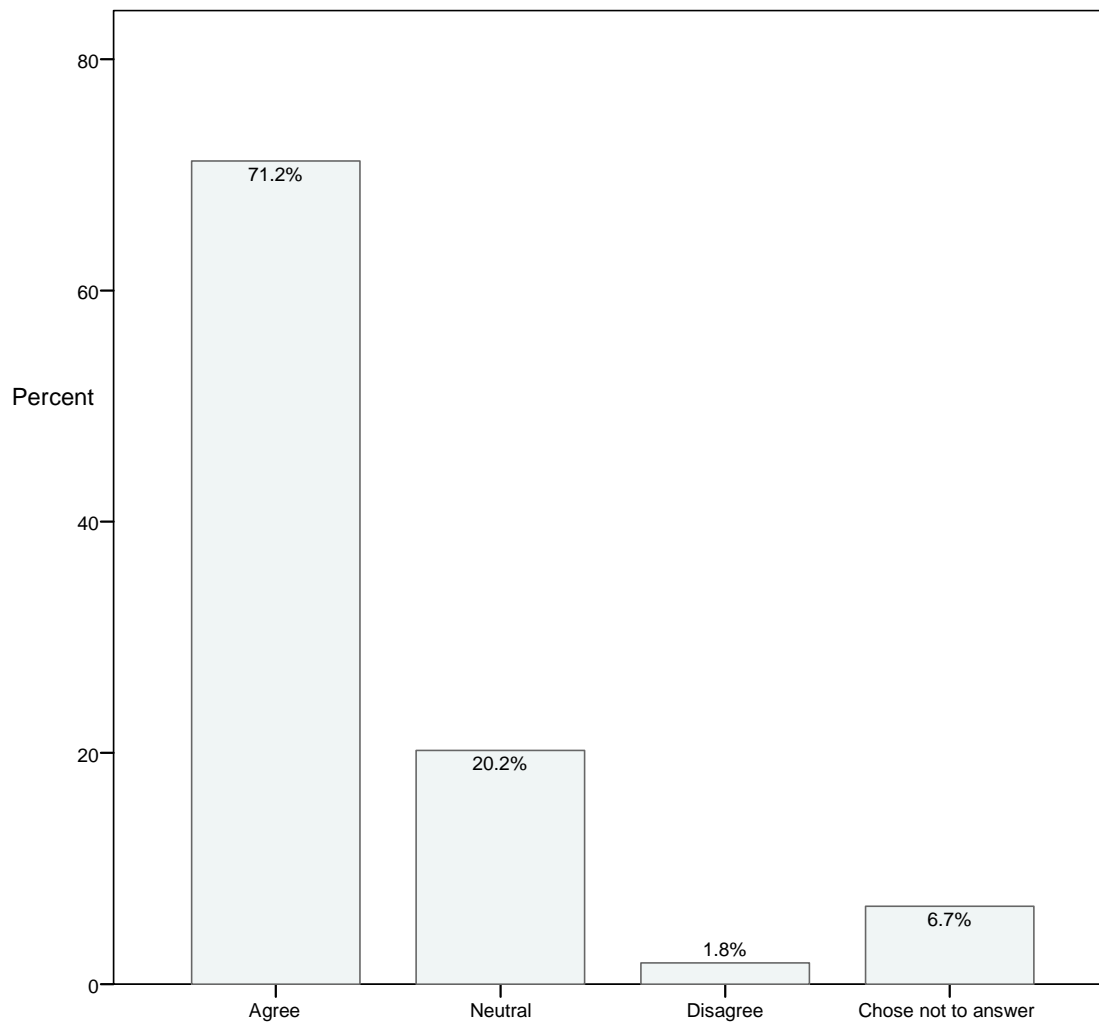
- Strongly Agree
- Agree
- Neutral
- Disagree
- Strongly Disagree
- I choose not to answer this question

Table 32

Satisfaction with technical support from SLN/CourseSpace helpdesk

	Frequency	Percent	Valid Percent	Cumulative Percent
Agree	4665	71.2	71.2	71.2
Neutral	1325	20.2	20.2	91.4
Disagree	120	1.8	1.8	93.3
Chose not to answer	441	6.7	6.7	100.0
Total	6551	100.0	100.0	

Figure 32. Satisfaction with the technical support from SLN/CourseSpace Helpdesk



Section VII. Impact of Online Medium

Items 33-37: Think about a similar classroom-based course you have taken. Compared to that course, because of the way this course uses online communication and interaction, how likely were you to...

33. Actively participate in scheduled discussions about the course material.

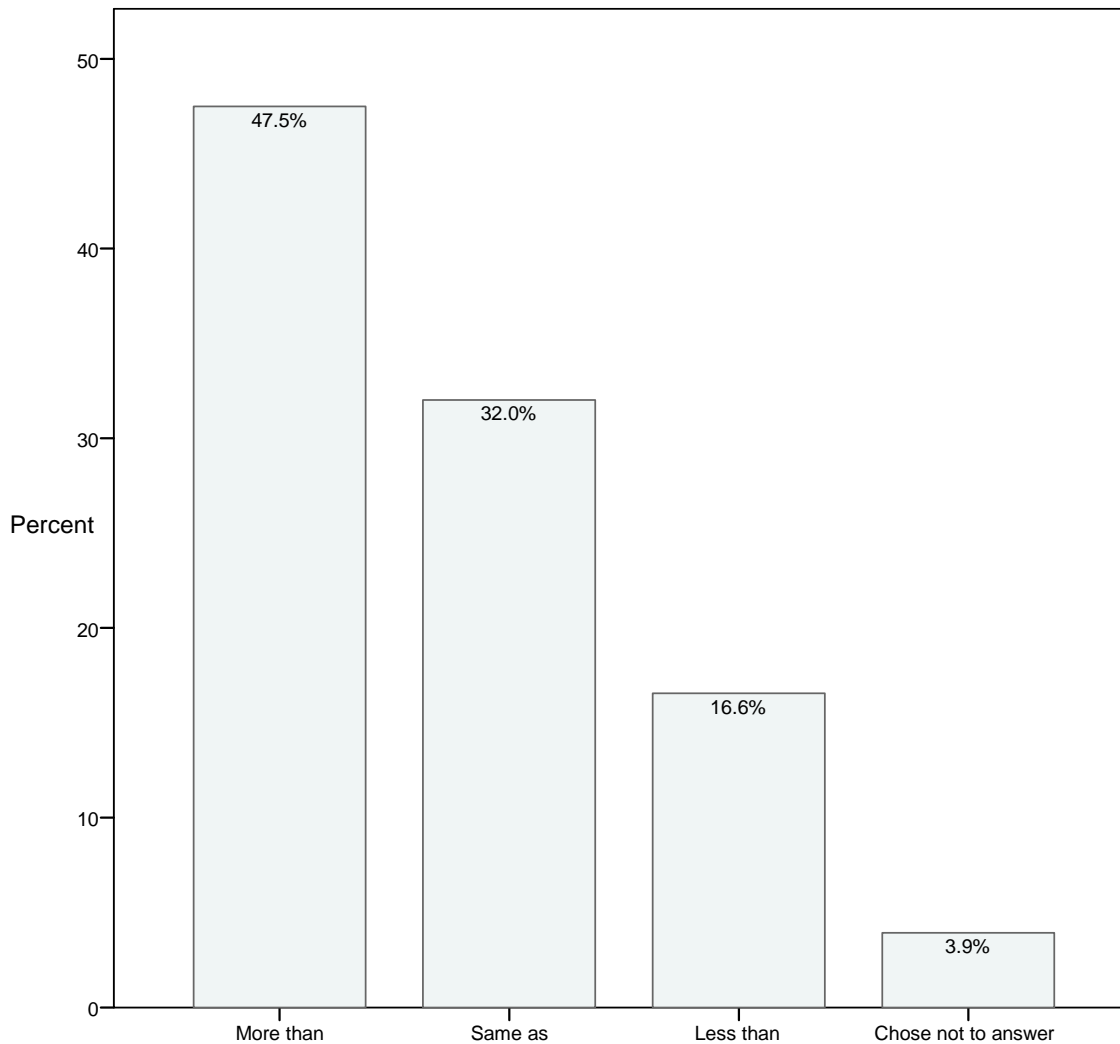
- Much more than in classroom courses
- More than in classroom course
- The same as in classroom course
- Less than in classroom course
- Much less than in classroom course
- I choose not to answer this question

Table 33

Impact of online medium on participation

	Frequency	Percent	Valid Percent	Cumulative Percent
More than	3111	47.5	47.5	47.5
Same as	2098	32.0	32.0	79.5
Less than	1085	16.6	16.6	96.1
Chose not to answer	257	3.9	3.9	100.0
Total	6551	100.0	100.0	

Figure 33. Impact of online medium on participation



Think about a similar classroom-based course you have taken. Compared to that course, because of the way this course uses online communication and interaction, how likely were you to...

34. Ask for clarification when you didn't understand something.

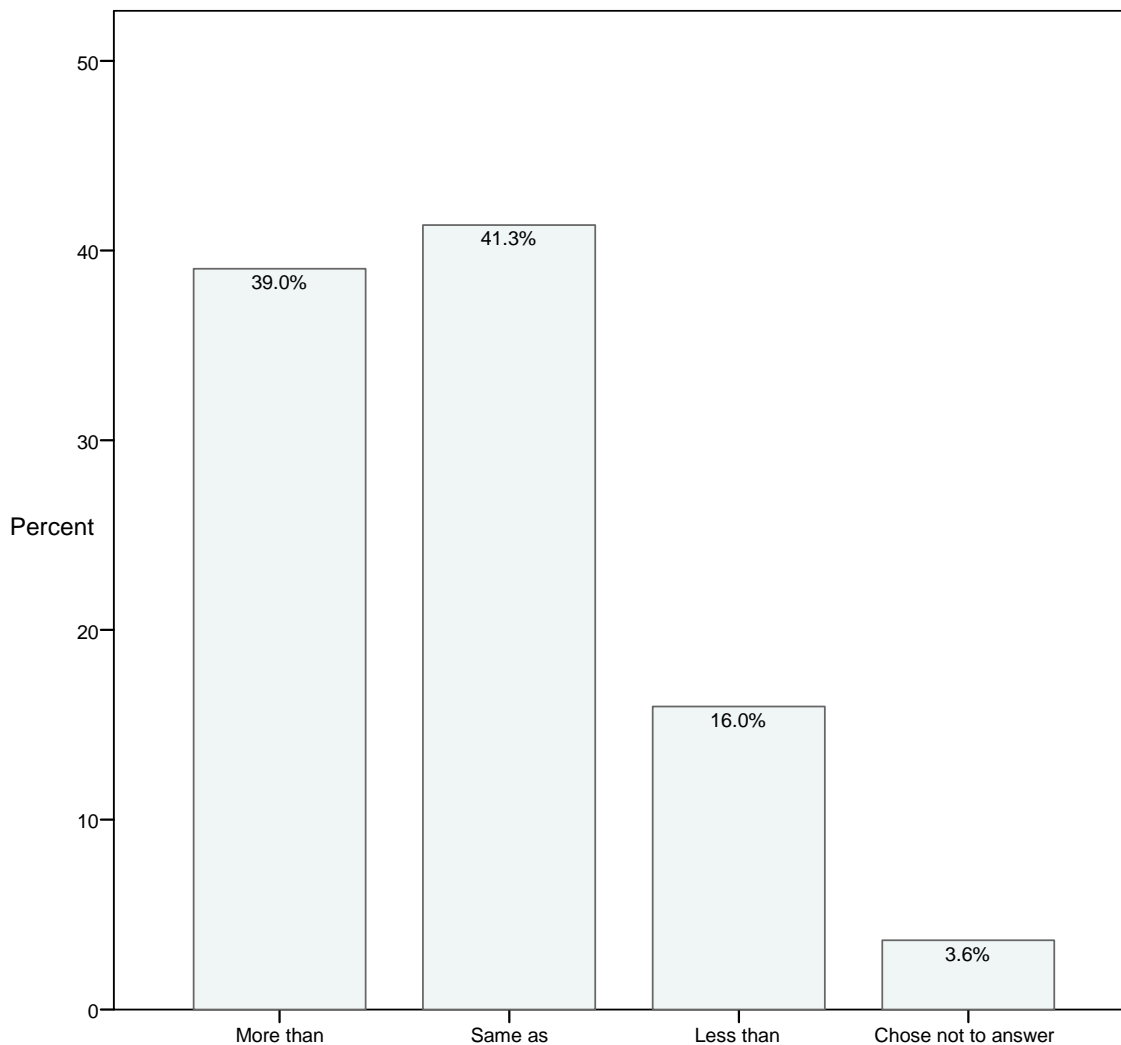
- Much more than in classroom courses
- More than in classroom course
- The same as in classroom course
- Less than in classroom course
- Much less than in classroom course
- I choose not to answer this question

Table 34

Impact of online medium on asking for clarification

	Frequency	Percent	Valid Percent	Cumulative Percent
More than	2558	39.0	39.0	39.0
Same as	2708	41.3	41.3	80.4
Less than	1046	16.0	16.0	96.4
Chose not to answer	239	3.6	3.6	100.0
Total	6551	100.0	100.0	

Figure 34. Impact of online medium on asking for clarification



Think about a similar classroom-based course you have taken. Compared to that course, because of the way this course uses online communication and interaction, how likely were you to...

35. Discuss the ideas and concepts taught in this course with other students.

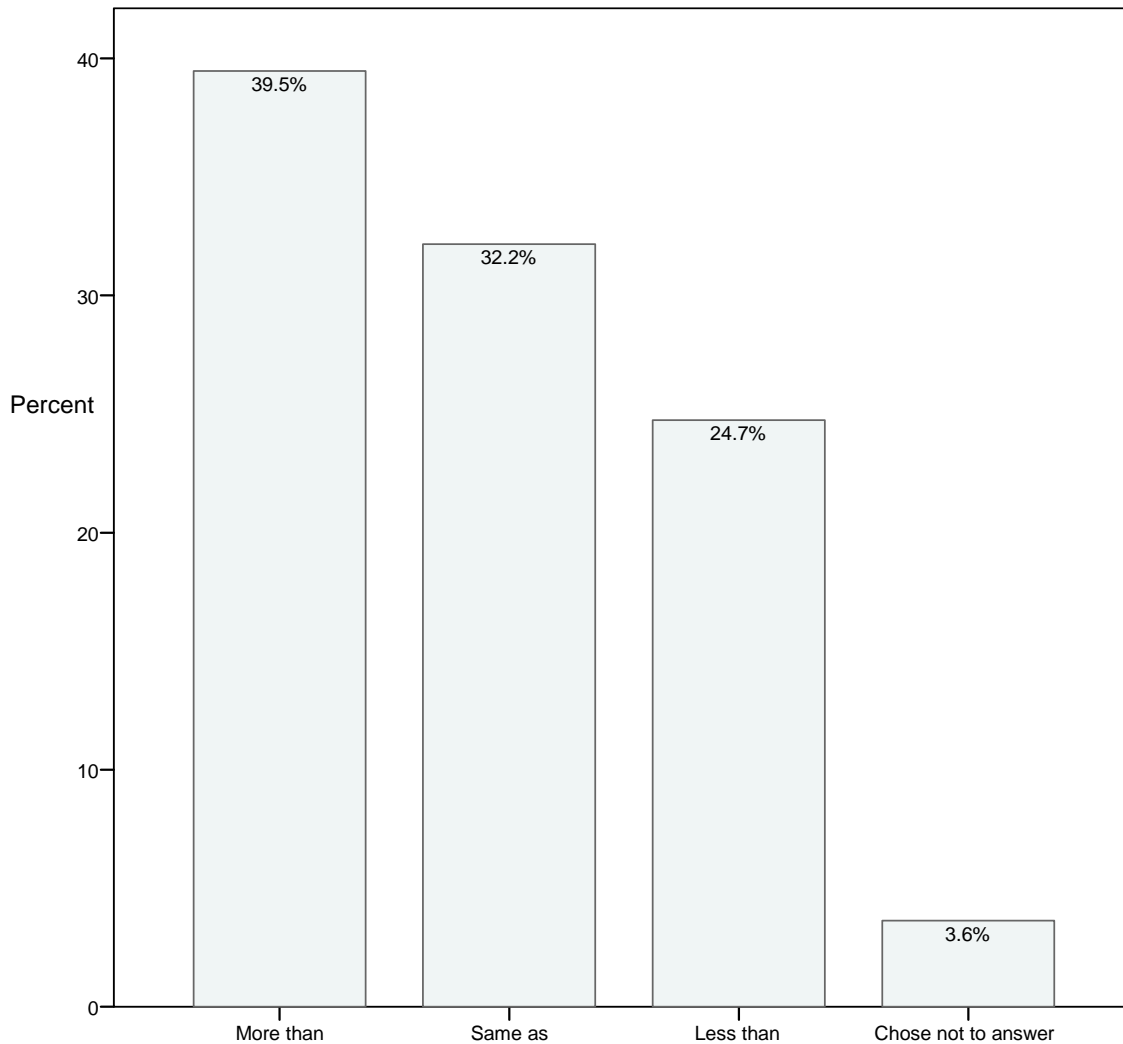
- Much more than in classroom courses
- More than in classroom course
- The same as in classroom course
- Less than in classroom course
- Much less than in classroom course
- I choose not to answer this question

Table 35

Impact of online medium on discussion of course content

	Frequency	Percent	Valid Percent	Cumulative Percent
More than	2585	39.5	39.5	39.5
Same as	2107	32.2	32.2	71.6
Less than	1621	24.7	24.7	96.4
Chose not to answer	238	3.6	3.6	100.0
Total	6551	100.0	100.0	

Figure 35. Impact of online medium on discussion of course content



Think about a similar classroom-based course you have taken. Compared to that course, because of the way this course uses online communication and interaction, how likely were you to...

36. Work on assignments with my classmates.

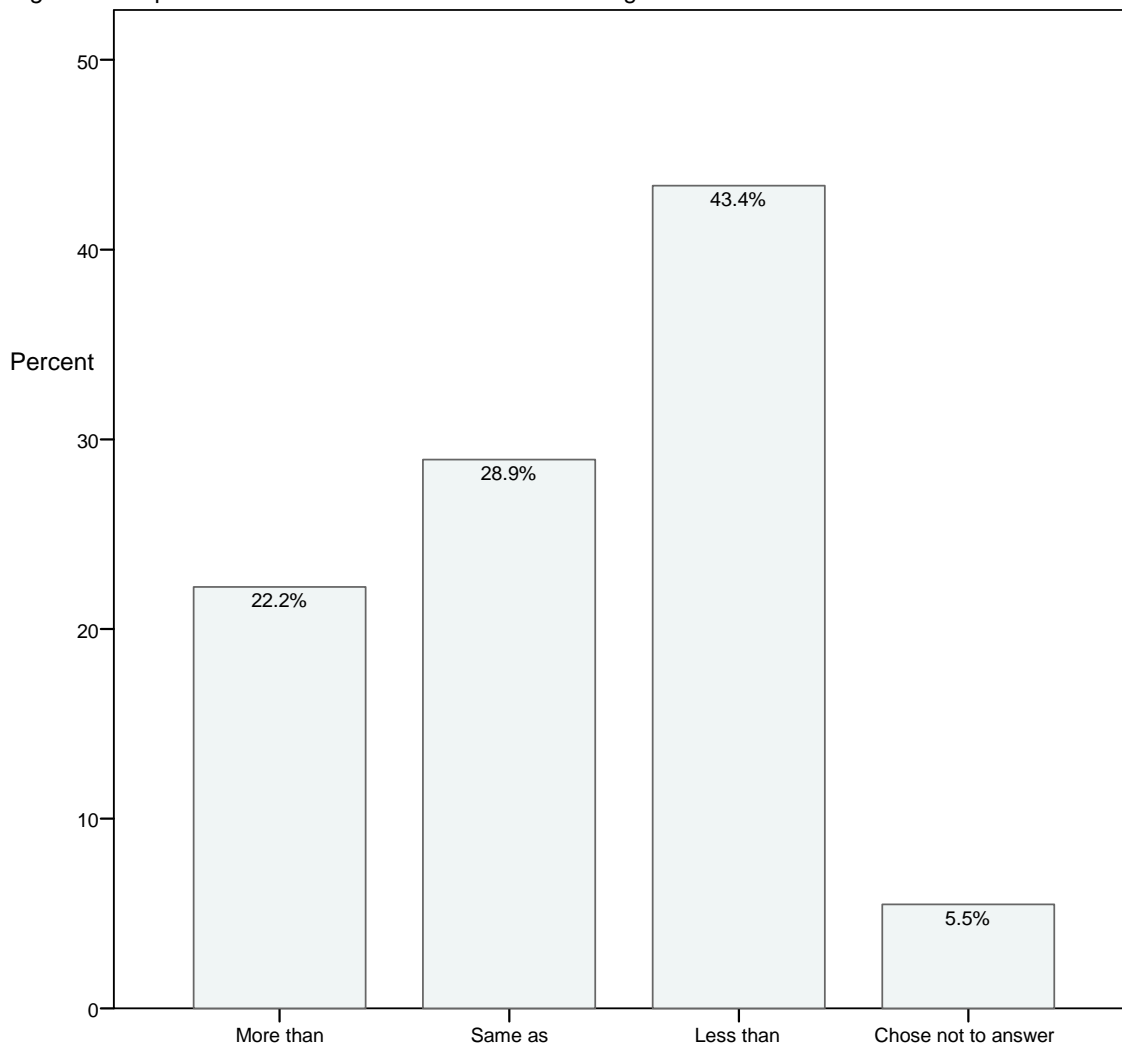
- Much more than in classroom courses
- More than in classroom course
- The same as in classroom course
- Less than in classroom course
- Much less than in classroom course
- I choose not to answer this question

Table 36

Impact of online medium on collaborative assignments

	Frequency	Percent	Valid Percent	Cumulative Percent
More than	1456	22.2	22.2	22.2
Same as	1895	28.9	28.9	51.2
Less than	2841	43.4	43.4	94.5
Chose not to answer	359	5.5	5.5	100.0
Total	6551	100.0	100.0	

Figure 36. Impact of online medium on collaborative assignments



Think about a similar classroom-based course you have taken. Compared to that course, because of the way this course uses online communication and interaction, how likely were you to...

37. Actively investigate questions or topics that are interesting or relevant to me.

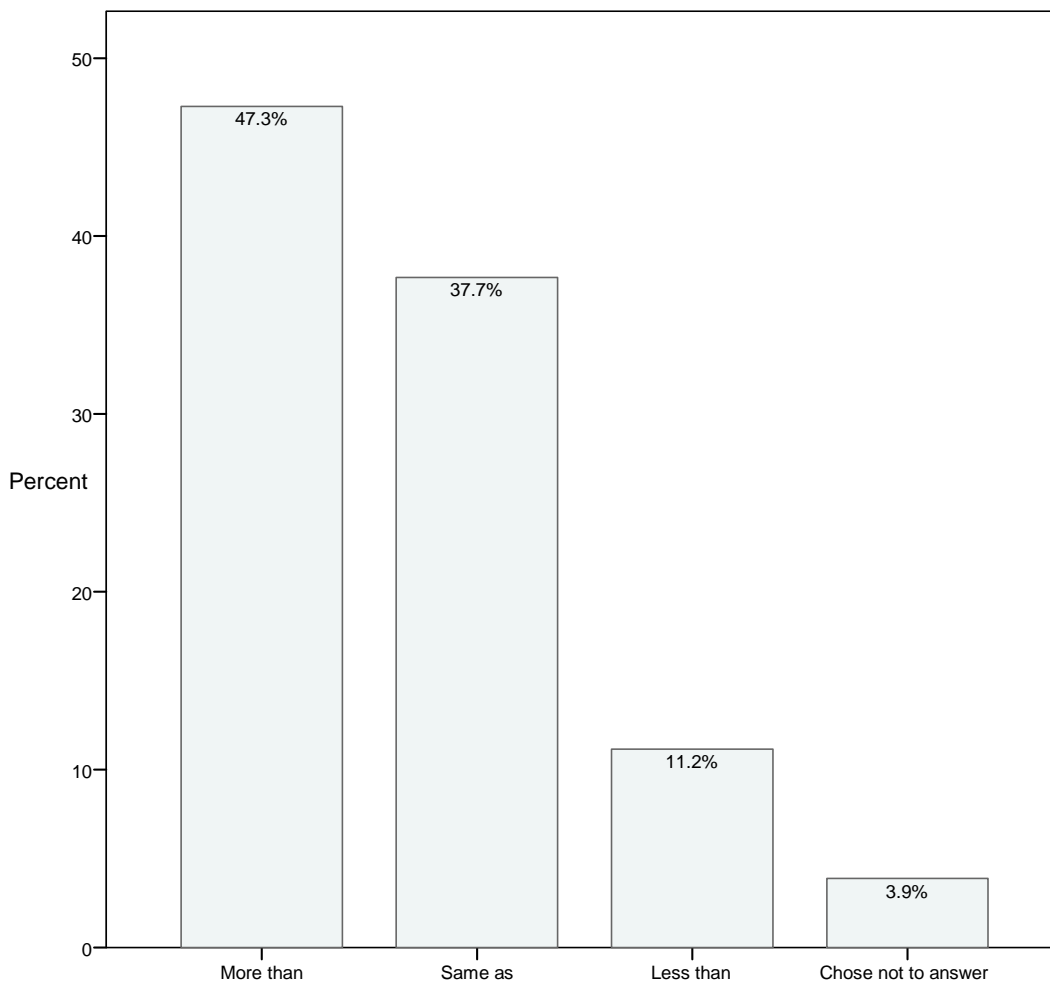
- Much more than in classroom courses
- More than in classroom course
- The same as in classroom course
- Less than in classroom course
- Much less than in classroom course
- I choose not to answer this question

Table 37

Impact of online medium on investigating topics of interest

	Frequency	Percent	Valid Percent	Cumulative Percent
More than	3098	47.3	47.3	47.3
Same as	2468	37.7	37.7	85.0
Less than	731	11.2	11.2	96.1
Chose not to answer	254	3.9	3.9	100.0
Total	6551	100.0	100.0	

Figure 37. Impact of online medium on investigating topics of interest



Section VIII. Impact of Online Medium in Course

Items 38-41: Because of the way this course uses online communication, i.e., some or all of your comments are written:

38. I put more thought into my online discussion comments than in classroom-based discussions.

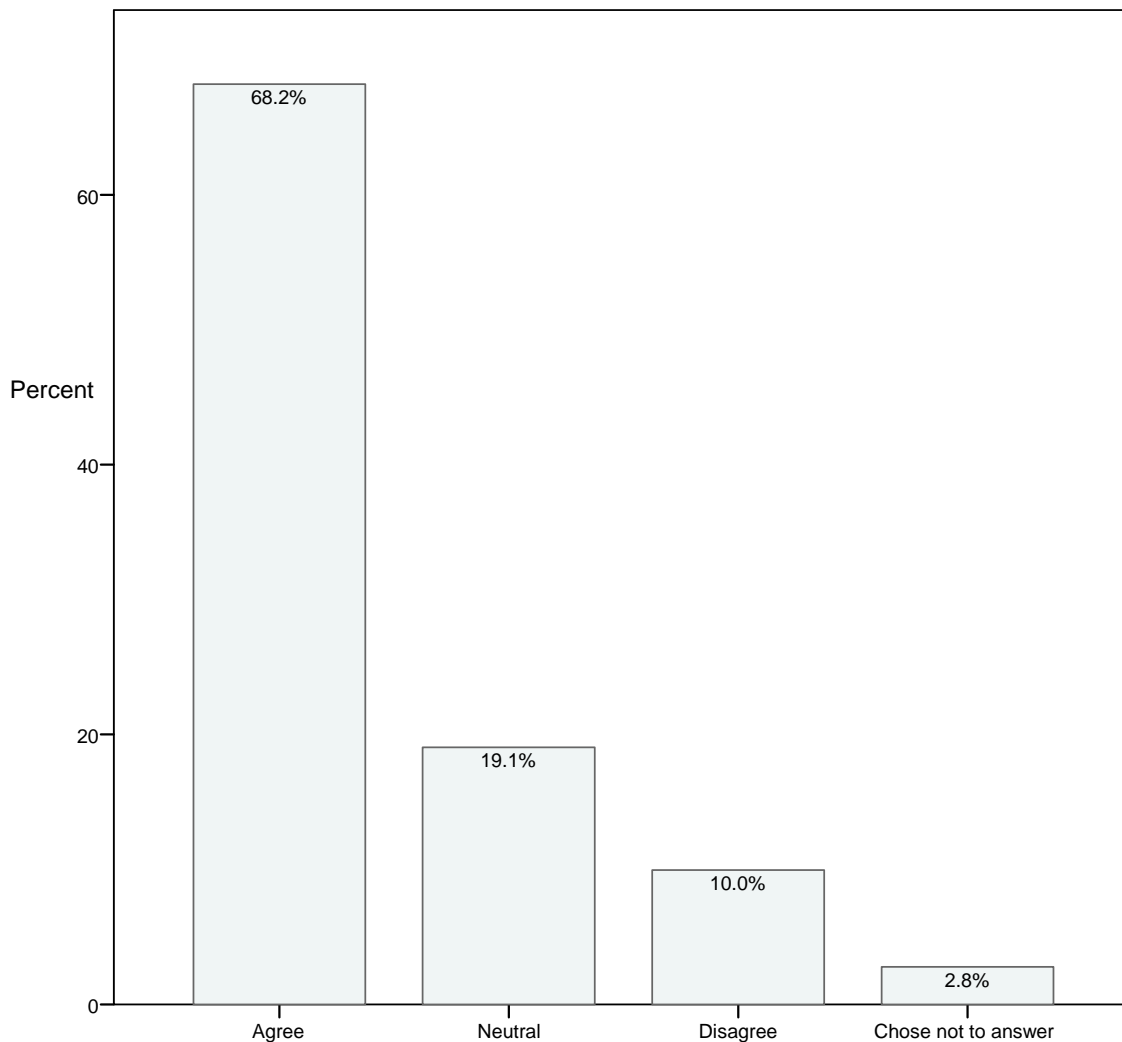
- Strongly Agree
- Agree
- Neutral
- Disagree
- Strongly Disagree
- I choose not to answer this question

Table 38

Belief that online medium increased student reflection

	Frequency	Percent	Valid Percent	Cumulative Percent
Agree	4468	68.2	68.2	68.2
Neutral	1248	19.1	19.1	87.3
Disagree	653	10.0	10.0	97.2
Chose not to answer	182	2.8	2.8	100.0
Total	6551	100.0	100.0	

Figure 38. Belief that online medium increased student reflection



Because of the way this course uses online communication, i.e., some or all of your comments are written:

39. My experience in the course has helped me learn to communicate my ideas more effectively in writing.

- Strongly Agree
- Agree
- Neutral
- Disagree
- Strongly Disagree
- I choose not to answer this question

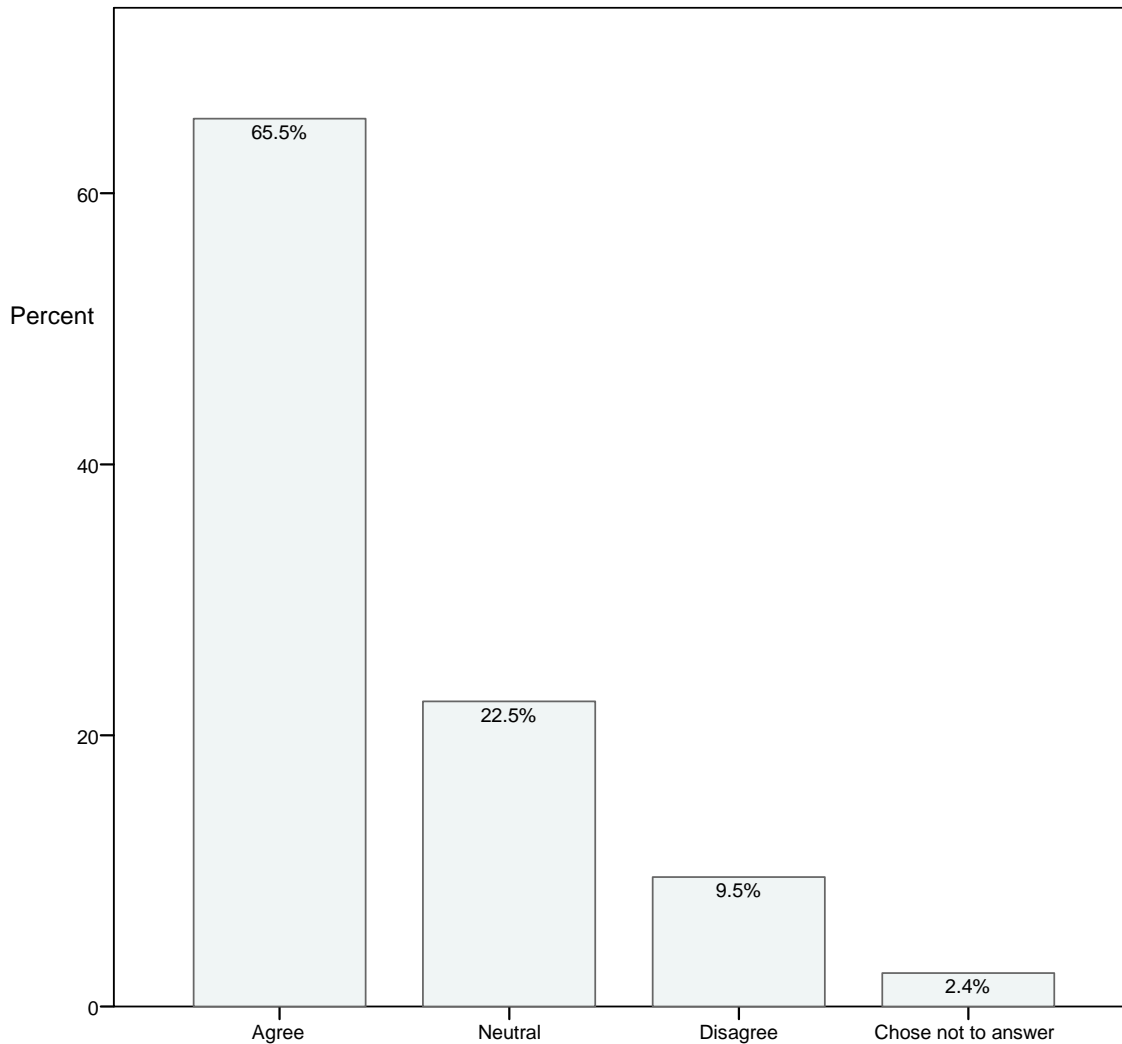
Table 39

Belief that online medium aided students in writing more clearly

		Frequency	Percent	Valid Percent	Cumulative Percent
Valid	Agree	4291	65.5	65.5	65.5
	Neutral	1474	22.5	22.5	88.0
	Disagree	625	9.5	9.5	97.6
	Chose not to answer	160	2.4	2.4	100.0
	Total	6550	100.0	100.0	
Missing data*		1	0.0		
Total		6551	100.0		

* Missing data – refers to a survey collected in which no answer was provided for this specific question.

Figure 39. Belief that online medium aided students in writing more clearly



Because of the way this course uses online communication, i.e., some or all of your comments are written:

40. I had lower quality interaction with my instructor.

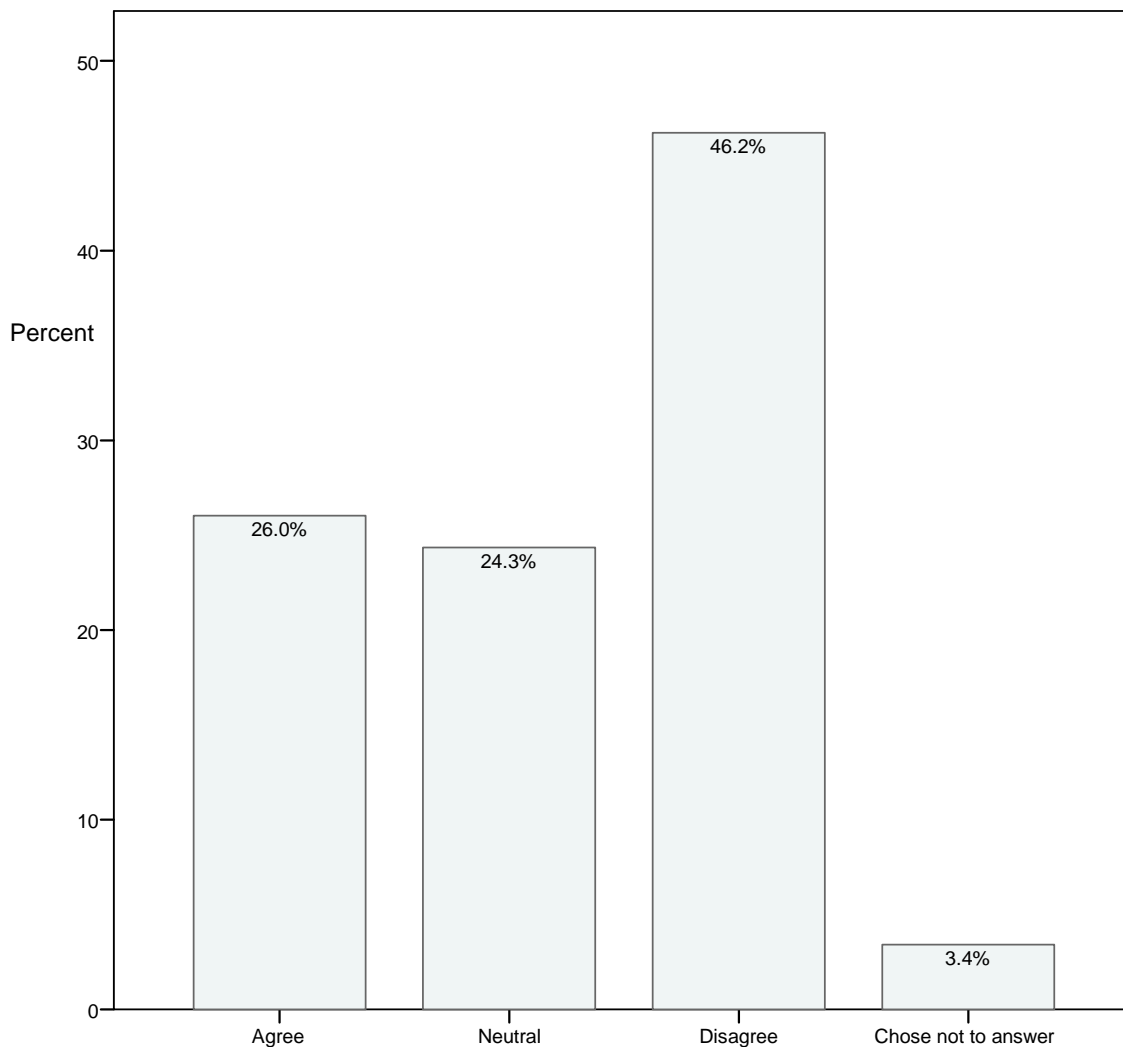
- Strongly Agree
- Agree
- Neutral
- Disagree
- Strongly Disagree
- I choose not to answer this question

Table 40

Belief that online medium lowered the quality of student's interaction with instructor

	Frequency	Percent	Valid Percent	Cumulative Percent
Agree	1705	26.0	26.0	26.0
Neutral	1595	24.3	24.3	50.4
Disagree	3027	46.2	46.2	96.6
Chose not to answer	224	3.4	3.4	100.0
Total	6551	100.0	100.0	

Figure 40. Belief that online medium lowered the quality of interaction with instructor



Because of the way this course uses online communication, i.e., some or all of your comments are written:

41. I had lower quality interaction with my classmates.

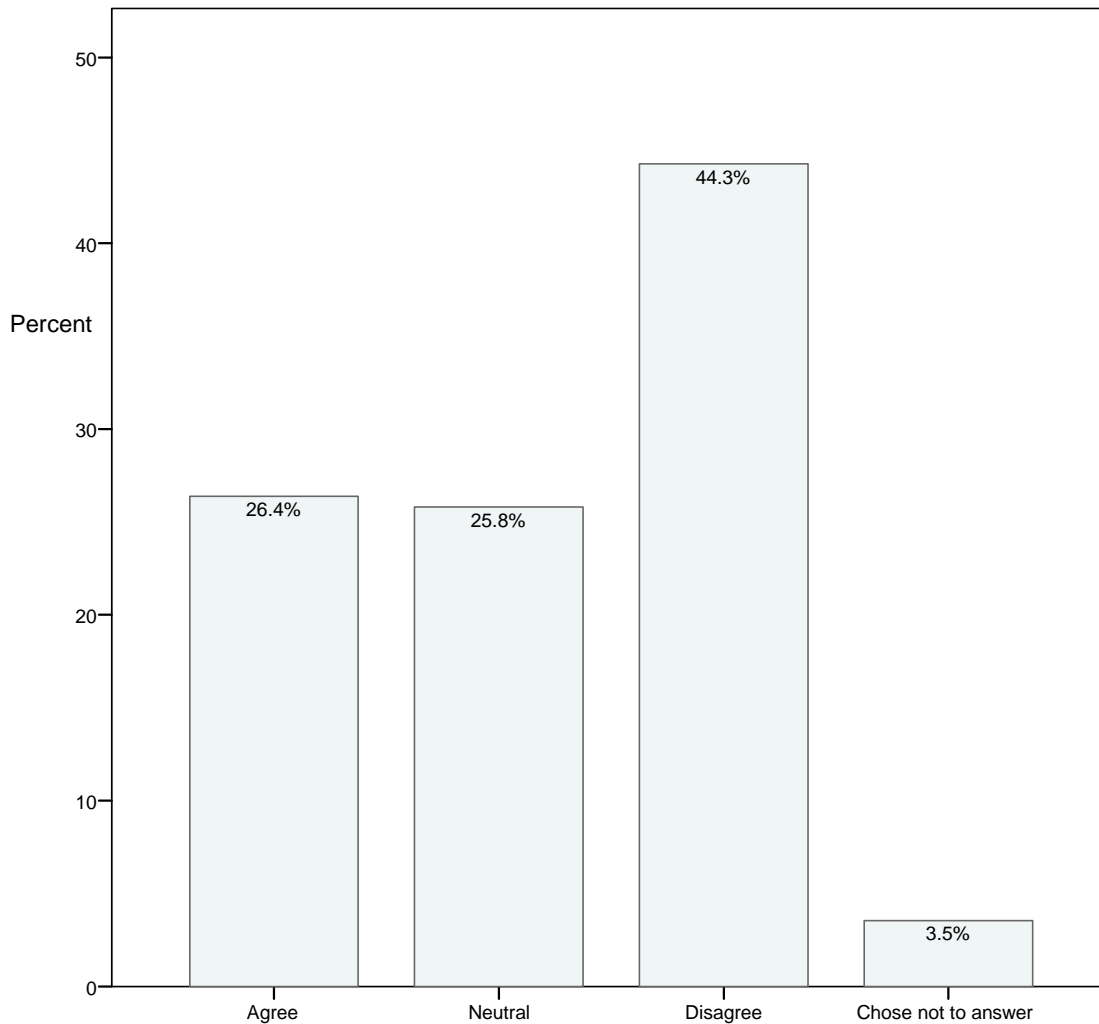
- Strongly Agree
- Agree
- Neutral
- Disagree
- Strongly Disagree
- I choose not to answer this question

Table 41

Belief that online medium lowered the quality of student's interaction with classmates

	Frequency	Percent	Valid Percent	Cumulative Percent
Agree	1728	26.4	26.4	26.4
Neutral	1690	25.8	25.8	52.2
Disagree	2901	44.3	44.3	96.5
Chose not to answer	232	3.5	3.5	100.0
Total	6551	100.0	100.0	

Figure 41. Belief that online medium lowered the quality of interaction with classmates



Section IX. General Course Information

Items 42-43:

42. In addition to text, this course presented content by using other media (for example - graphics, animation, audio, or video).

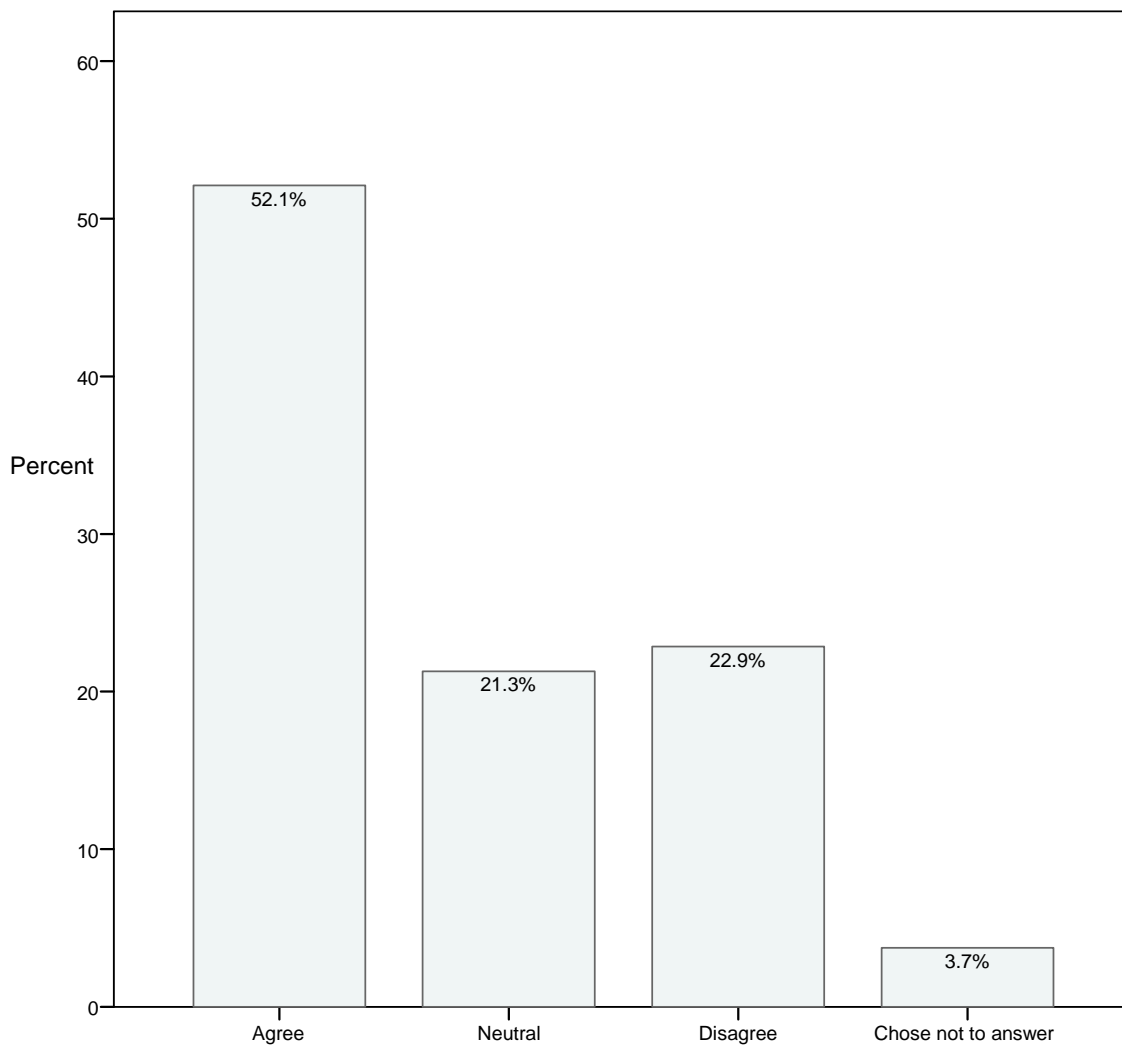
- Strongly Agree
- Agree
- Neutral
- Disagree
- Strongly Disagree
- I choose not to answer this question

Table 42

Use of media other than text

	Frequency	Percent	Valid Percent	Cumulative Percent
Agree	3414	52.1	52.1	52.1
Neutral	1395	21.3	21.3	73.4
Disagree	1497	22.9	22.9	96.3
Chose not to answer	245	3.7	3.7	100.0
Total	6551	100.0	100.0	

Figure 42. Use of media other than text



43. I have considered dropping out of this course.

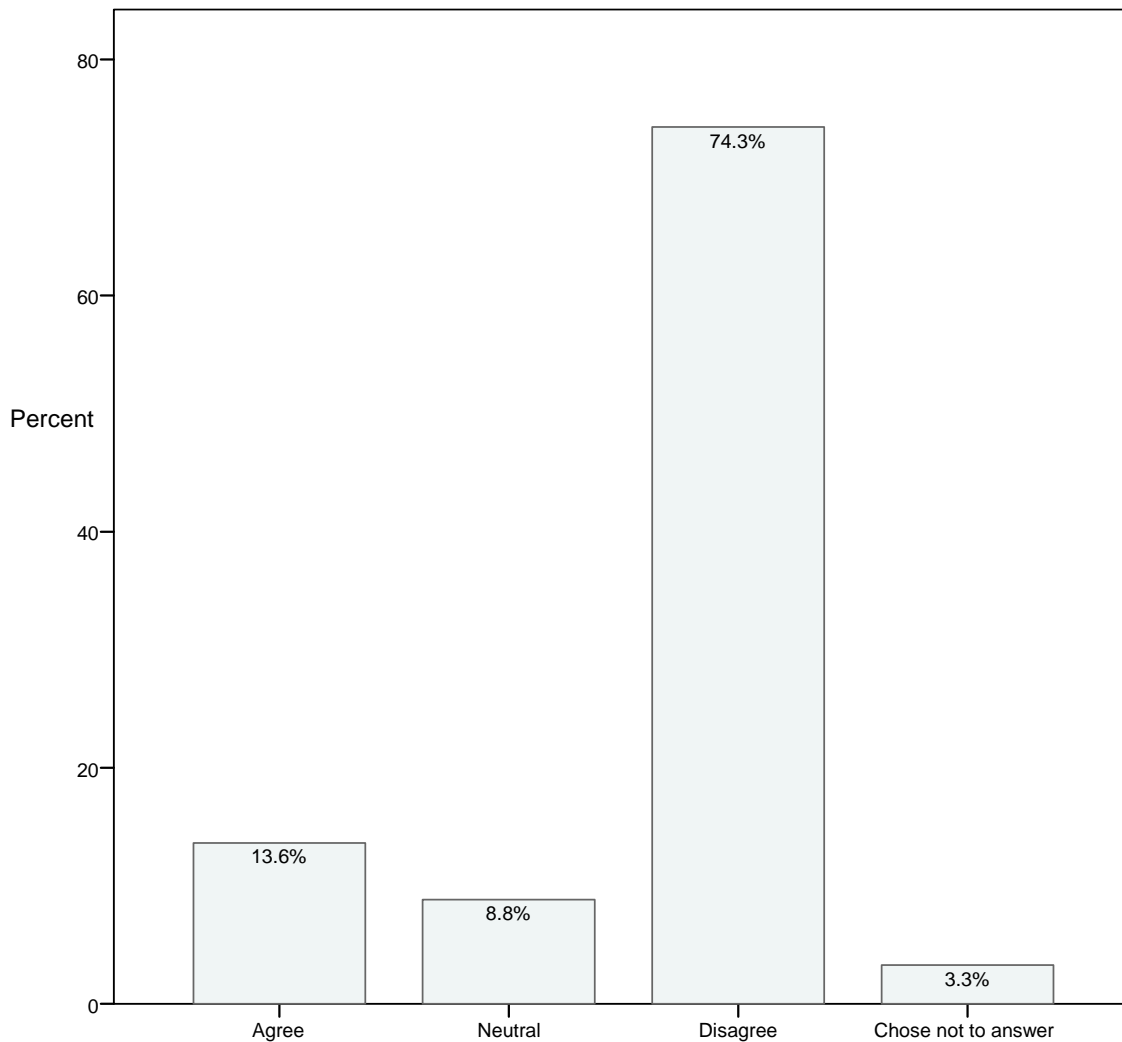
- Strongly Agree
- Agree
- Neutral
- Disagree
- Strongly Disagree
- I choose not to answer this question

Table 43

Considered dropping course

	Frequency	Percent	Valid Percent	Cumulative Percent
Agree	893	13.6	13.6	13.6
Neutral	578	8.8	8.8	22.5
Disagree	4865	74.3	74.3	96.7
Chose not to answer	215	3.3	3.3	100.0
Total	6551	100.0	100.0	

Figure 43. Considered dropping course



Section X. General Medium Information

Items 44-49: Because of the way this course uses online communication, I felt...

44. More comfortable asking an awkward question via online communication.

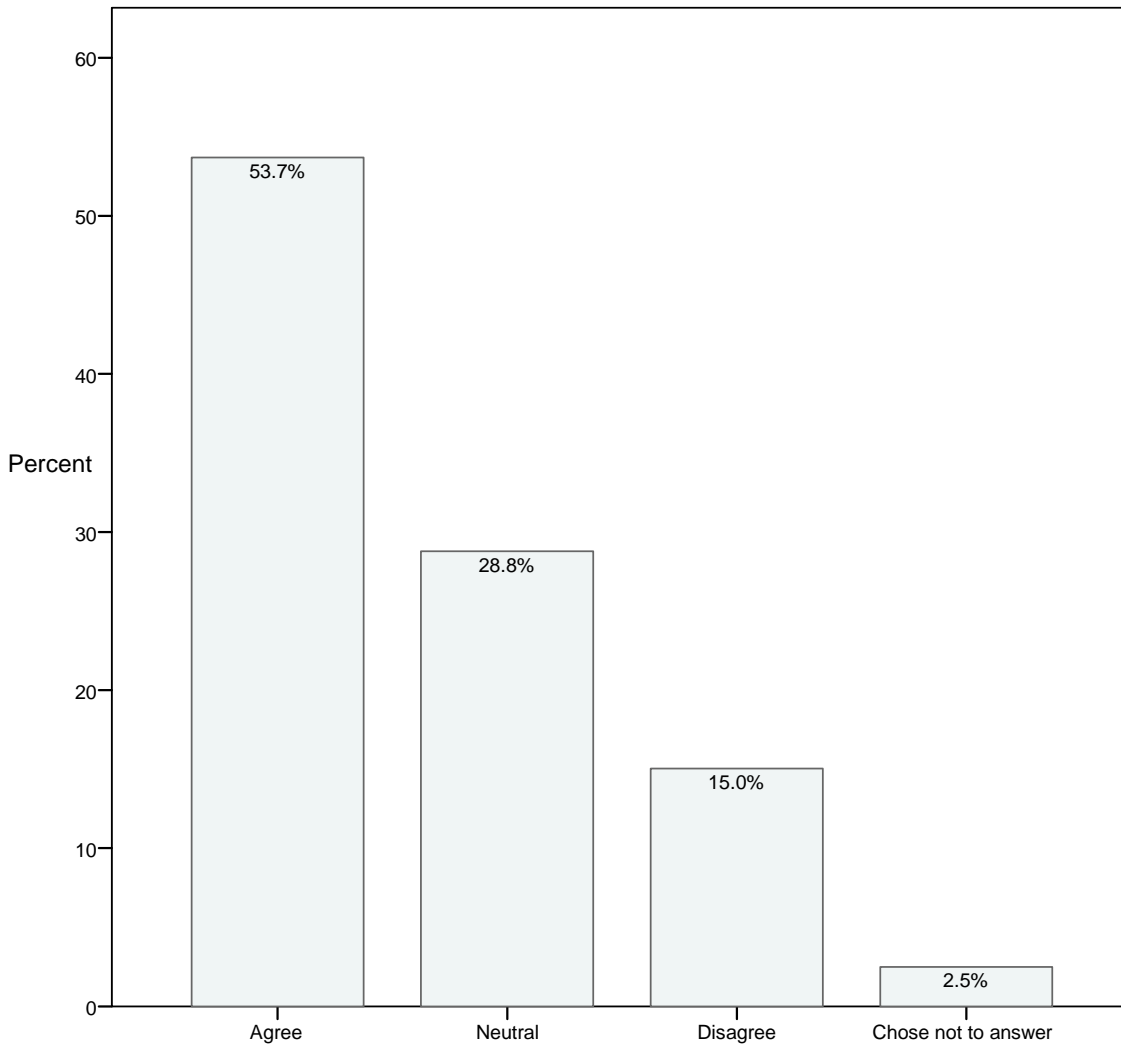
- Strongly Agree
- Agree
- Neutral
- Disagree
- Strongly Disagree
- I choose not to answer this question

Table 44

Comfortable asking awkward questions

	Frequency	Percent	Valid Percent	Cumulative Percent
Agree	3518	53.7	53.7	53.7
Neutral	1885	28.8	28.8	82.5
Disagree	985	15.0	15.0	97.5
Chose not to answer	163	2.5	2.5	100.0
Total	6551	100.0	100.0	

Figure 44. Comfortable asking awkward questions



Because of the way this course uses online communication, I felt...

45. More isolated due to the use of online communication.

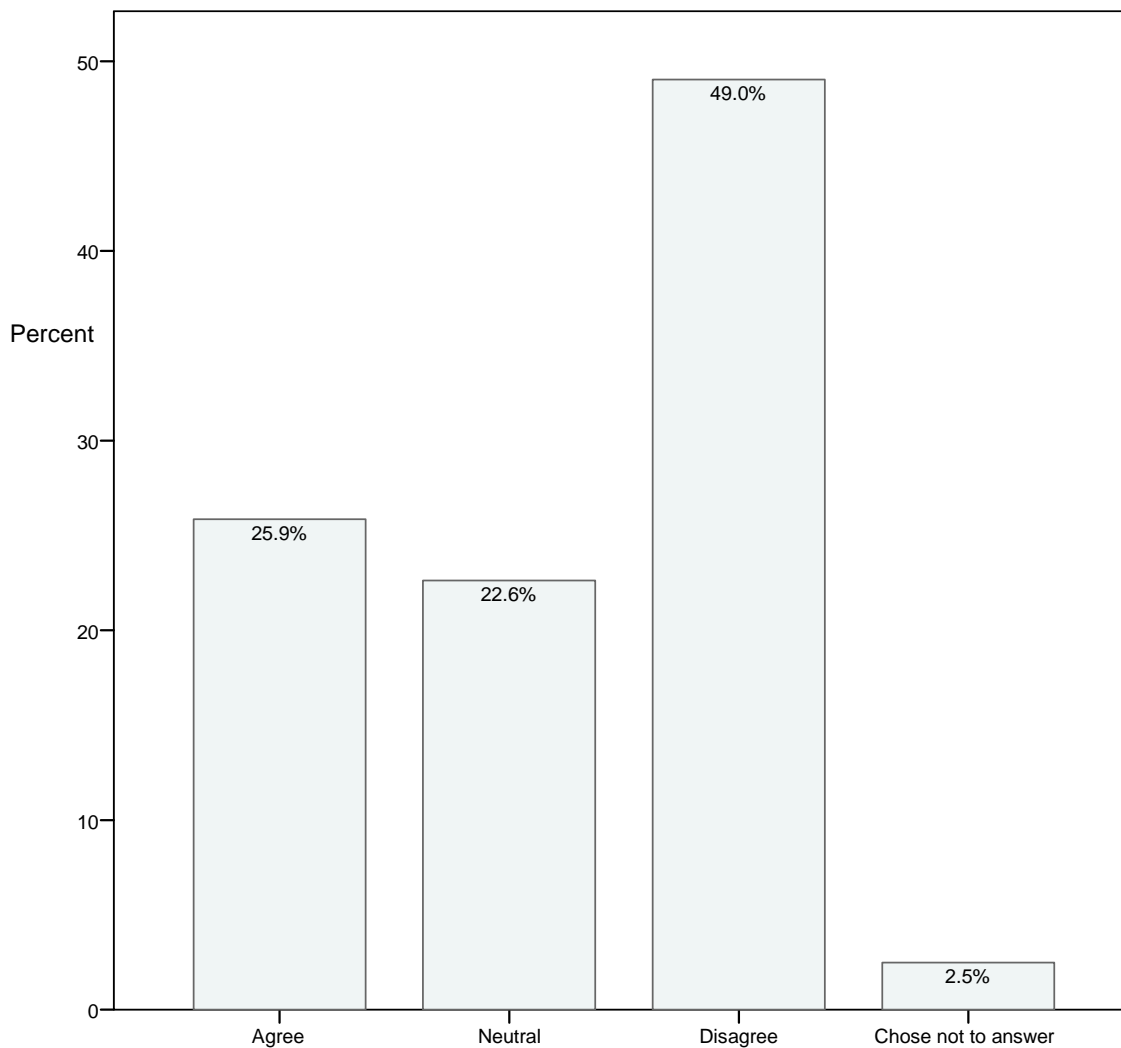
- Strongly Agree
- Agree
- Neutral
- Disagree
- Strongly Disagree
- I choose not to answer this question

Table 45

Felt isolated

	Frequency	Percent	Valid Percent	Cumulative Percent
Agree	1694	25.9	25.9	25.9
Neutral	1482	22.6	22.6	48.5
Disagree	3212	49.0	49.0	97.5
Chose not to answer	163	2.5	2.5	100.0
Total	6551	100.0	100.0	

Figure 45. Felt isolated



Because of the way this course uses online communication, I felt...

46. More comfortable disagreeing with the instructor via online communication.

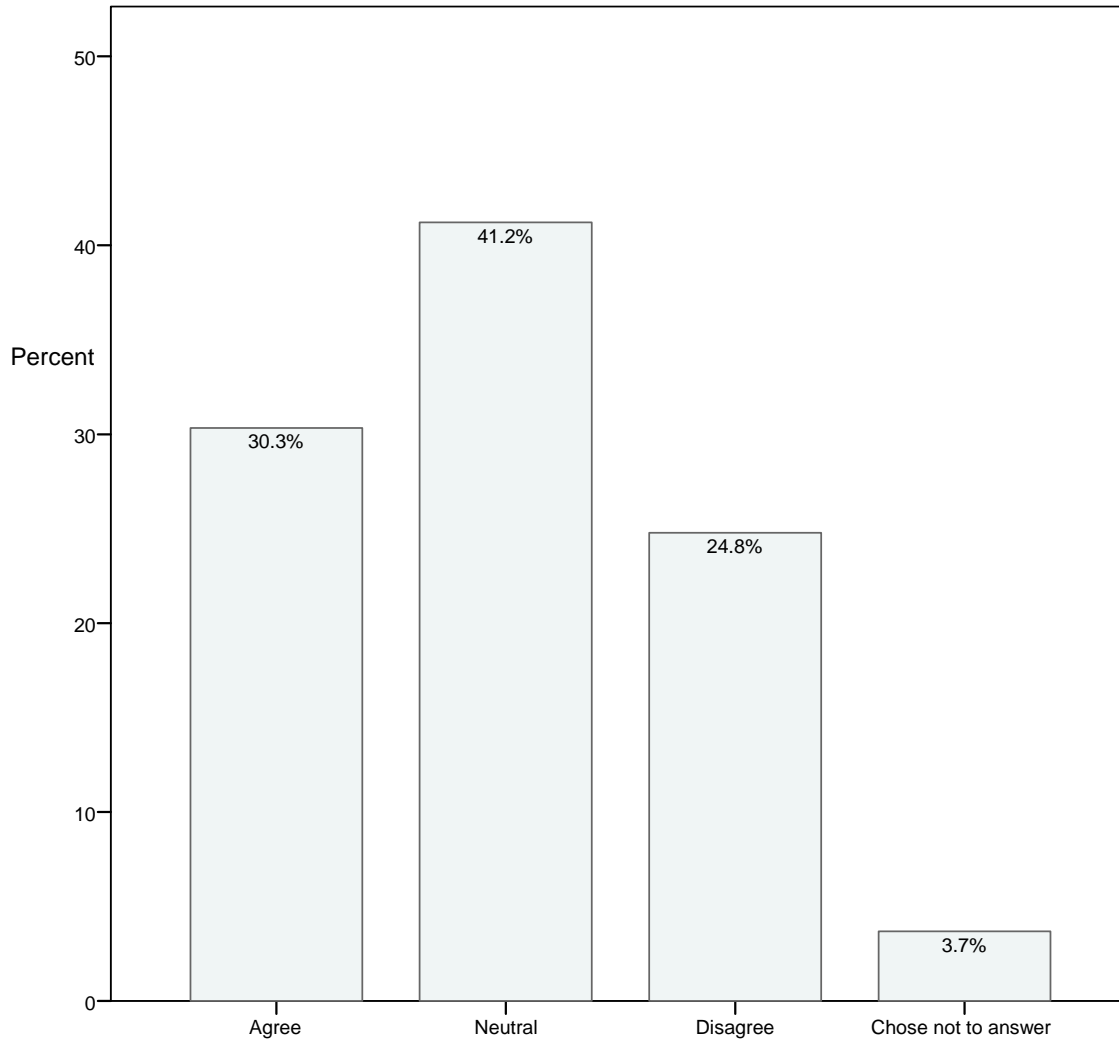
- Strongly Agree
- Agree
- Neutral
- Disagree
- Strongly Disagree
- I choose not to answer this question

Table 46

Comfortable disagreeing with instructor

	Frequency	Percent	Valid Percent	Cumulative Percent
Agree	1987	30.3	30.3	30.3
Neutral	2699	41.2	41.2	71.5
Disagree	1624	24.8	24.8	96.3
Chose not to answer	241	3.7	3.7	100.0
Total	6551	100.0	100.0	

Figure 46. Comfortable disagreeing with instructor



Because there is anytime anyplace access to the class through the SLN or CourseSpace course website:

47. I was able to spend more time studying.

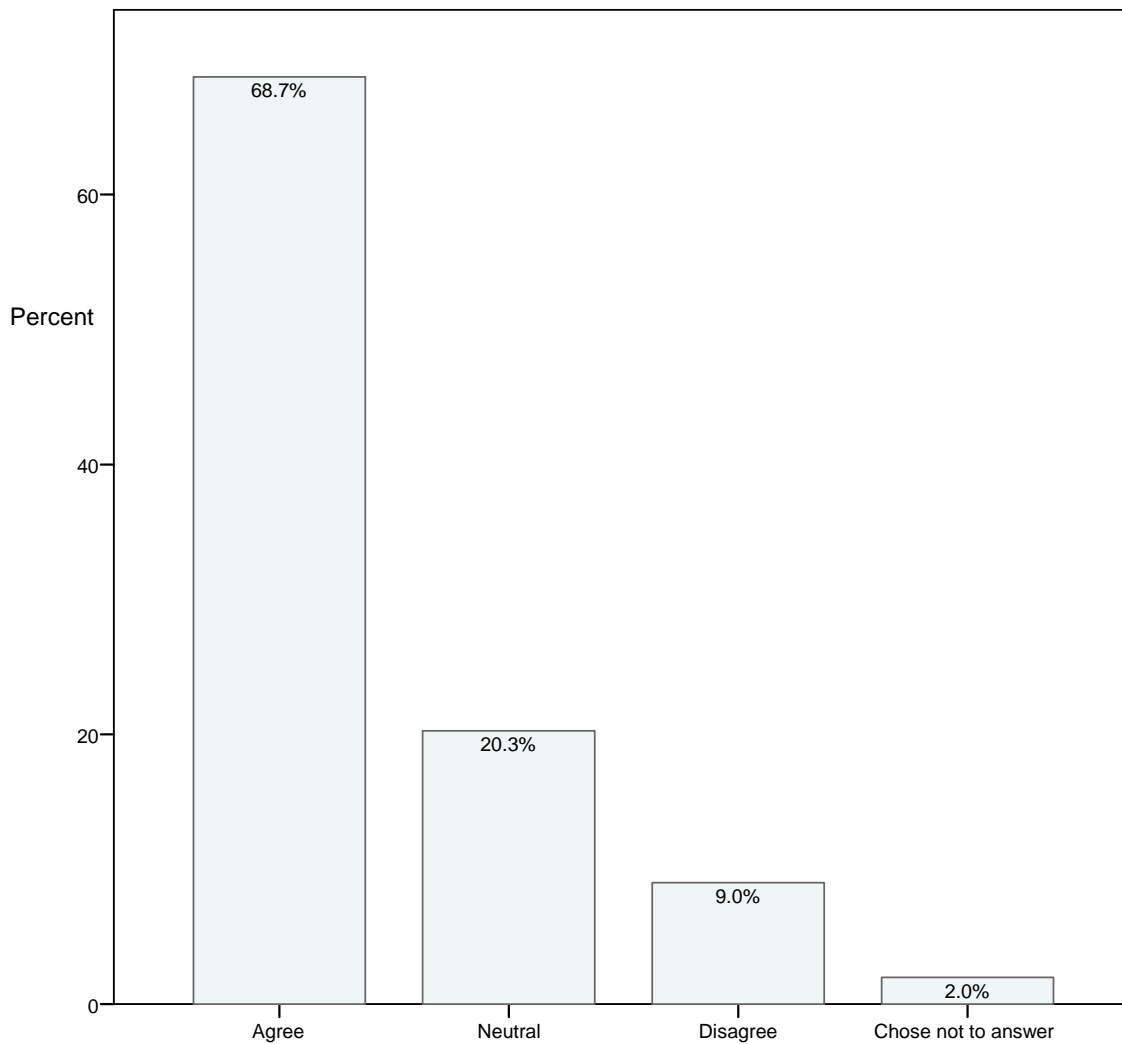
- Strongly Agree
- Agree
- Neutral
- Disagree
- Strongly Disagree
- I choose not to answer this question

Table 47

Medium allowed for more study time

	Frequency	Percent	Valid Percent	Cumulative Percent
Agree	4503	68.7	68.7	68.7
Neutral	1327	20.3	20.3	89.0
Disagree	590	9.0	9.0	98.0
Chose not to answer	131	2.0	2.0	100.0
Total	6551	100.0	100.0	

Figure 47. Medium allowed for more study time



Because there is anytime anyplace access to the class through the SLN or CourseSpace course website:

48. The additional time I spent studying was productive (e.g., helped me learn more).

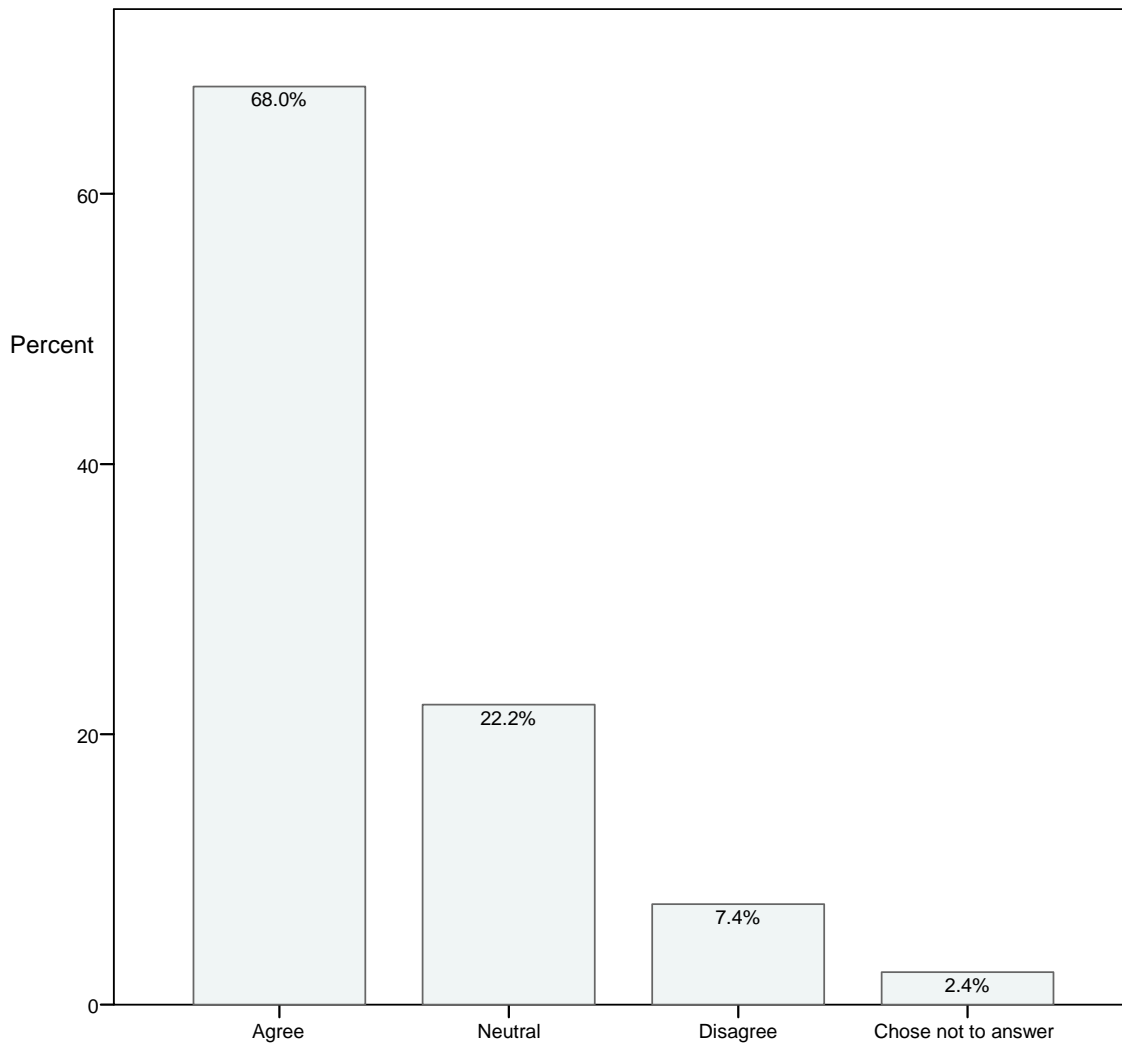
- Strongly Agree
- Agree
- Neutral
- Disagree
- Strongly Disagree
- I choose not to answer this question

Table 48

Medium allowed for more productive study time

	Frequency	Percent	Valid Percent	Cumulative Percent
Agree	4452	68.0	68.0	68.0
Neutral	1454	22.2	22.2	90.2
Disagree	487	7.4	7.4	97.6
Chose not to answer	158	2.4	2.4	100.0
Total	6551	100.0	100.0	

Figure 48. Medium allowed for more productive study time



49. I would recommend online learning to a friend or colleague.

- Strongly Agree
- Agree
- Neutral
- Disagree
- Strongly Disagree
- I choose not to answer this question

Table 49

Would recommend online learning to others

		Frequency	Percent	Valid Percent	Cumulative Percent
Valid	Agree	5467	83.5	84.5	84.5
	Neutral	661	10.1	10.2	94.7
	Disagree	282	4.3	4.4	99.1
	Chose not to answer	58	0.9	0.9	100.0
	Total	6468	98.7	100.0	
Missing data*		83	1.3		
Total		6551	100.0		

* Missing data – refers to surveys collected in which no answers were provided for this specific question.

Figure 49. Would recommend online learning to others

