

HOW TO CREATE A DEFINABLE ATTRIBUTE IN A DRAWING

LEARNING OBJECTIVES:

1. STUDENTS WILL LEARN TO CREATE A BASIC EDITABLE ATTRIBUTE (ATTDEF)
2. DEFINE HOW TO CREATE AND USE A BLOCK
3. USE WBLOCK COMMAND TO CREATE A BLOCK FILE
4. APPLY FORMATING SKILLS USED IN PREVIOUS LABS
5. DRAWING WITH NO SCALE NEEDED

[LAB #5 VIDEO ATTRIBUTE DEFINITION \(ATTDEF\)](#)

STEP ONE: DRAWING SET UP

CC-1 DRAWING SPECS

<u>LAYERS</u>	<u>COLORS</u>
DIMS	RED
TEXT	WHITE
BORDER	BLUE
VPORT	RED
HIDDEN LINE	MAGENTA (HIDDEN LINE TYPE)
SYM	GREEN
WIRE	RED

FORMATTING FOR THIS DRAWING

DRAWING SCALE:	N.T.S. NOT TO SCALE
TEXT STYLE:	FULL SCALE
STYLE NAME:	FULL_SCALE ARIAL
FONT STYLE:	ARIAL
TEXT HEIGHT:	.5" HEIGTH

FORMAT:

UNITS: DECIMAL

ROTATE VIEW IN VIEW PORT (VP)-90 deg.

DRAWING TITLE: WIRING SCHEMATIC

DRAWING # = CC-1

DONUTS: (DO THESE LAST AFTER DWG IS COMPLETED)

INSIDE DIAMETER =0---OUTSIDE DIAMETER=.30---SELECT ENDPOINTS/ETC.

IF .3 IS TOO LARGE OR TOO SMALL, CHANGE THE OUTSIDE DIAMETER. TO LOOK LIKE THE DOTS ON THE PDF.

STEP TWO: CREATE OBJECTS FOR ATTDEF (ATTRIBUTE DEFINITION)

SAVE FILE AS: E-SYM-ATT.dwg

THIS DRAWING WILL DEMONSTRATE HOW TO CREATE AN ATTRIBUTE DEFINITION FOR STORING DATA IN A BLOCK

NEW LAYERS:

SYM--GREEN

TEXT LAYER--WHITE

DRAW NEW SYMBOL FIG. 5.1

TURN ON THE OBJECT SNAP (OSNAP) SETTINGS--INSERTION/MIDPOINT/ENDPOINT/CENTER/QUADRANT

DRAW 2.25" DIAMETER CIRCLE ON THE **SYM LAYER** at 0,0 ORIGIN POINT (X, Y)

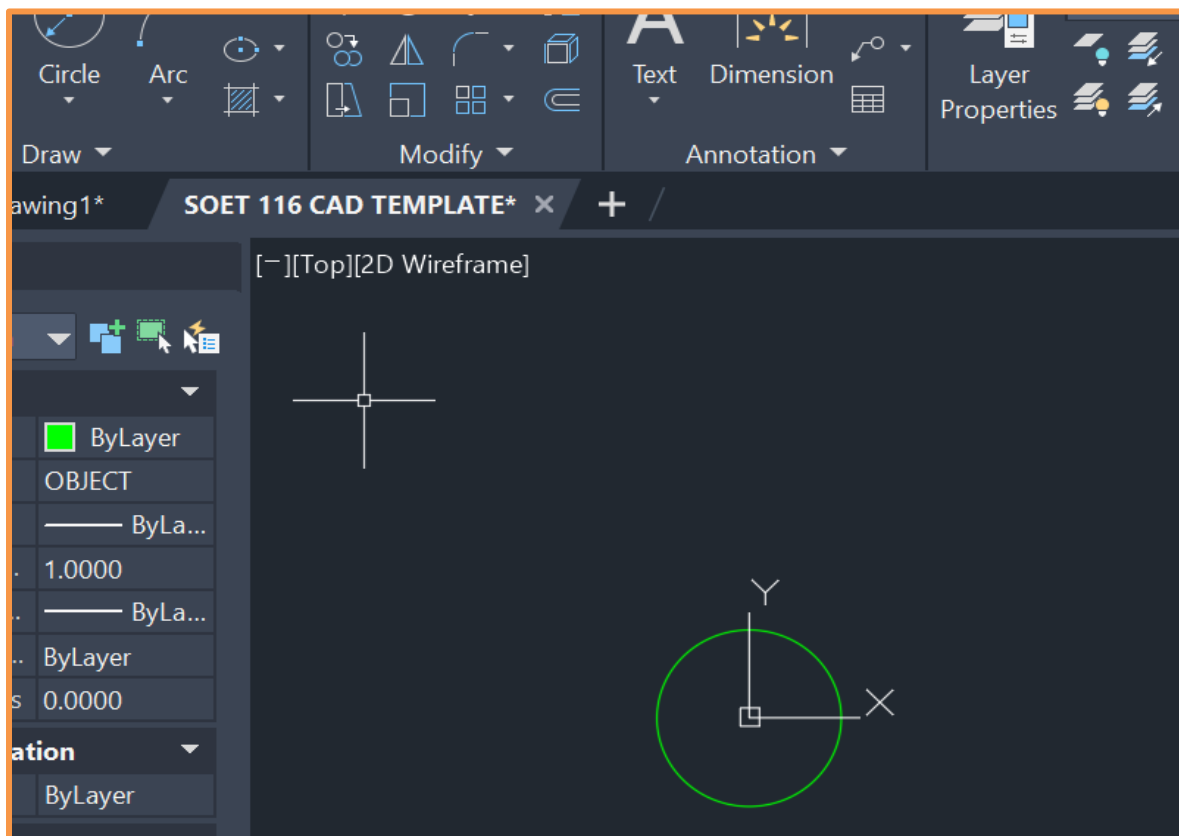


FIG. 5.1

STEP THREE: CREATE TEXT FOR ATTDEF FIG 5.2

TYPE **ATTDEF** INTO THE COMMAND LINE OR DYN (Dynamic input) THEN COMPLETE THE FOLLOWING

TAG = X-X
PROMPT = ENTER E-SYM
DEFAULT = ? -?

JUSTIFY = MC
TEXT STYLE = STANDARD
TEXT HEIGHT = .75
ROTATION = 0

SELECT OK --THE COMMAND LINE or DYNAMIC INPUT (DYN) WILL ASK YOU TO **Specify start point:**
SELECT THE CENTER OF THE CIRCLE FIG 5.3

- a. TYPE **ED**/SELECT THE **X-X** IN THE CIRCLE AND VERIFY THAT THE PROMT SAYS **ENTER E-SYM**
- b. SAVE THE DRAWING

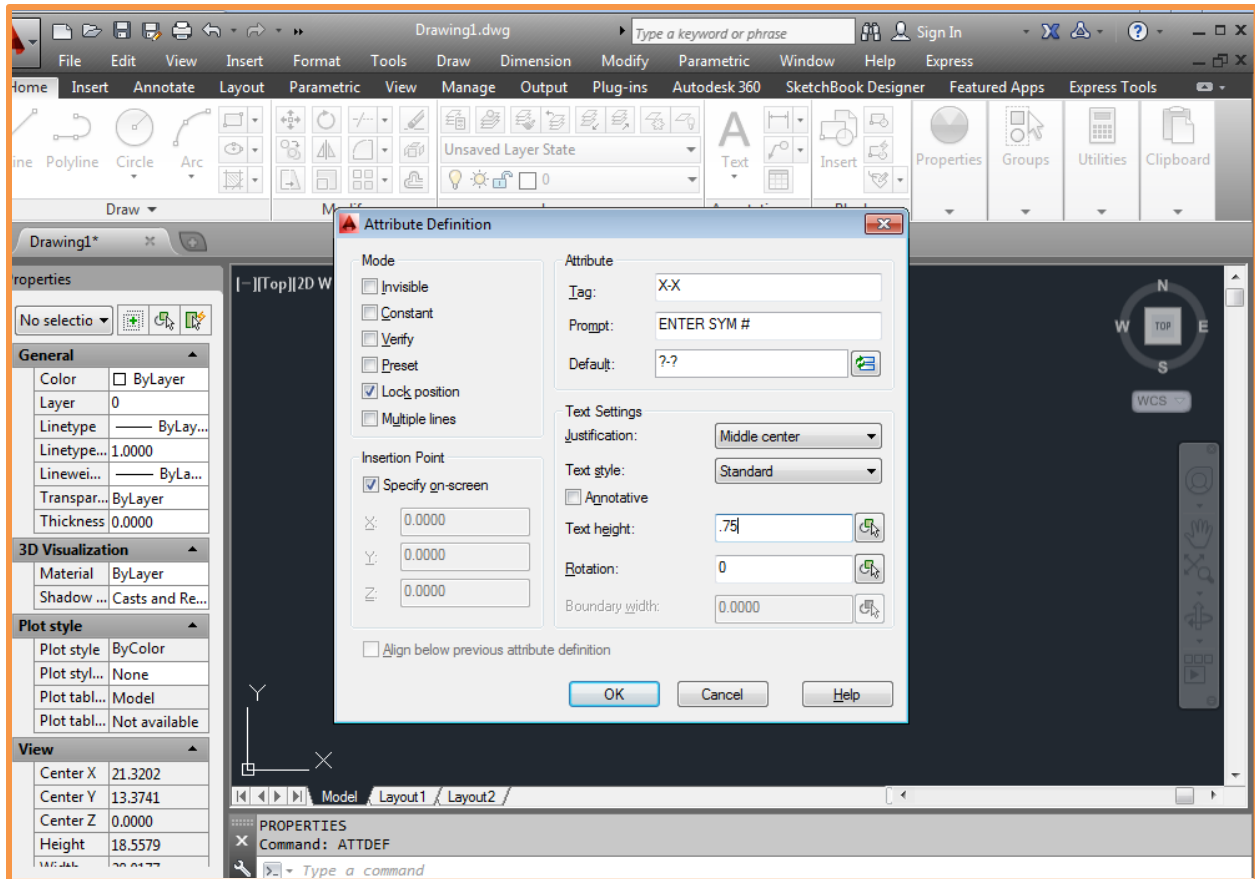


FIG 5.2

STEP FOUR: CREATE WBLOCK (WRITE BLOCK) FOR ATTDEF (ATTRIBUTE DEFINITION) FIG 5.3

TYPE **WBLOCK** INTO THE COMMAND LINE OR DYN TO START THE **WRITE BLOCK** DIALOG BOX.

SELECT **PICK POINT** AND PICK THE CENTER OF THE CIRCLE IN THE MIDDLE OF THE ELECTRICAL SYMBOL

CLICK ON **SELECT OBJECTS** BUTTON AND SELECT THE FOLLOWING IN THIS ORDER

--SELECT THE **?-?**

---THEN SELECT THE CIRCLE---**ENTER**

CLICK THE BOX AT THE END OF THE **FILE NAME AND PATH** NEAR THE BOTTOM OF THE WRITE BLOCK DIALOG BOX.

SAVE THE FILE INTO YOUR CAD FOLDER AS **E-SYM-ATT**

SELECT OK TO EXIT WBLOCK DIALOG BOX

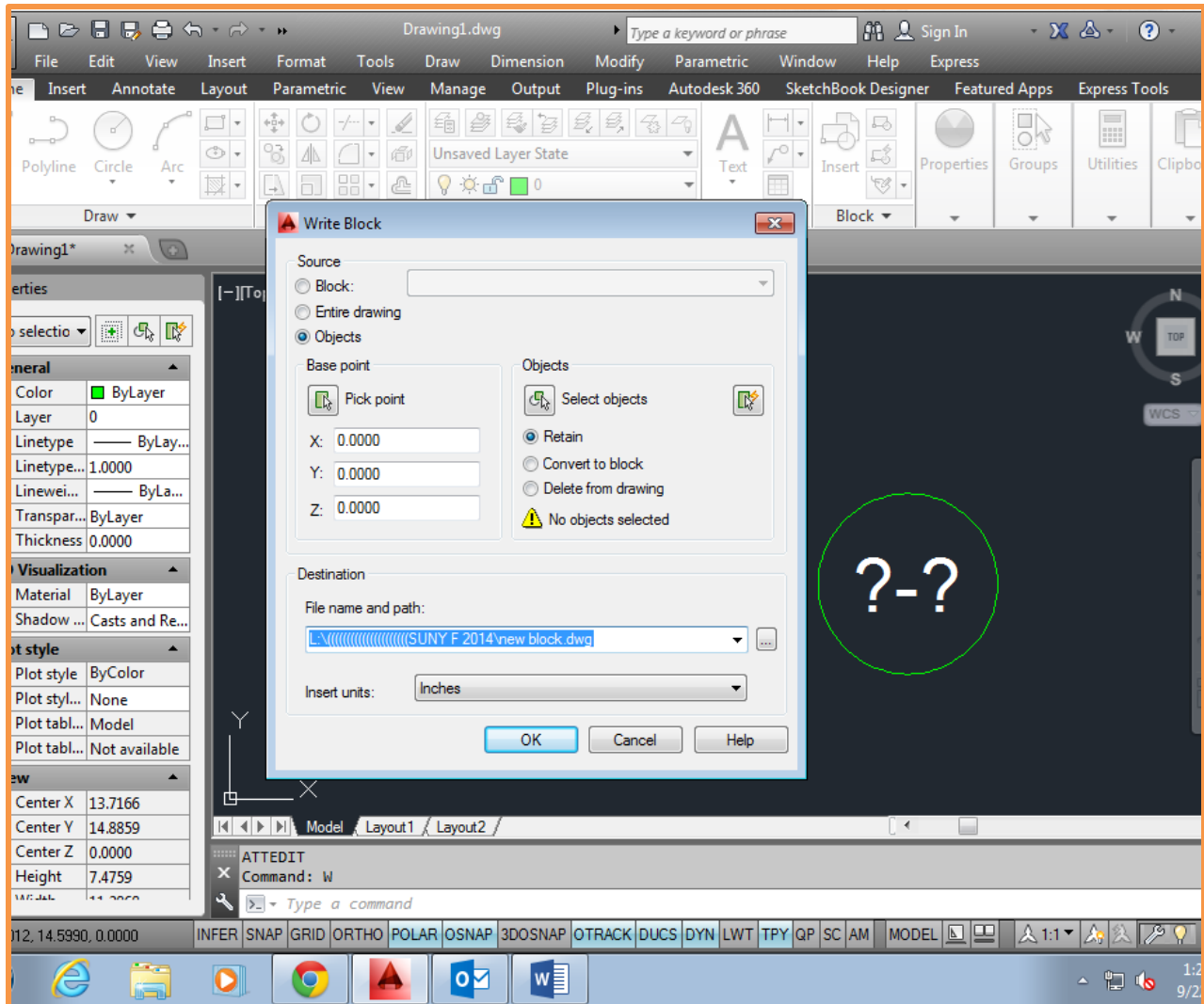


FIG 5.3

STEP FIVE- INSERT BLOCK FOR ATTDEF FIG 5.4

SELECT INSERT BLOCK FROM THE PULL-DOWN MENU OR INSERT PANEL

BROWSE AND FIND YOUR **E-SYM-ATT.dwg** FILE

CLICK ANY POINT IN THE MODEL SPACE TO INSERT THE BLOCK IN THE SCREEN/MODEL SPACE

FOLLOW THE COMMAND LINE TO ENTER THE 1

ENTER E-SYM = ENTER THE TEXT VALUE APPLIES TO THE E-DRAWING YOU WILL BE MAKING. TYPE ATE AND SELECT THE ATTRIBUTE TO CHANGE THE #

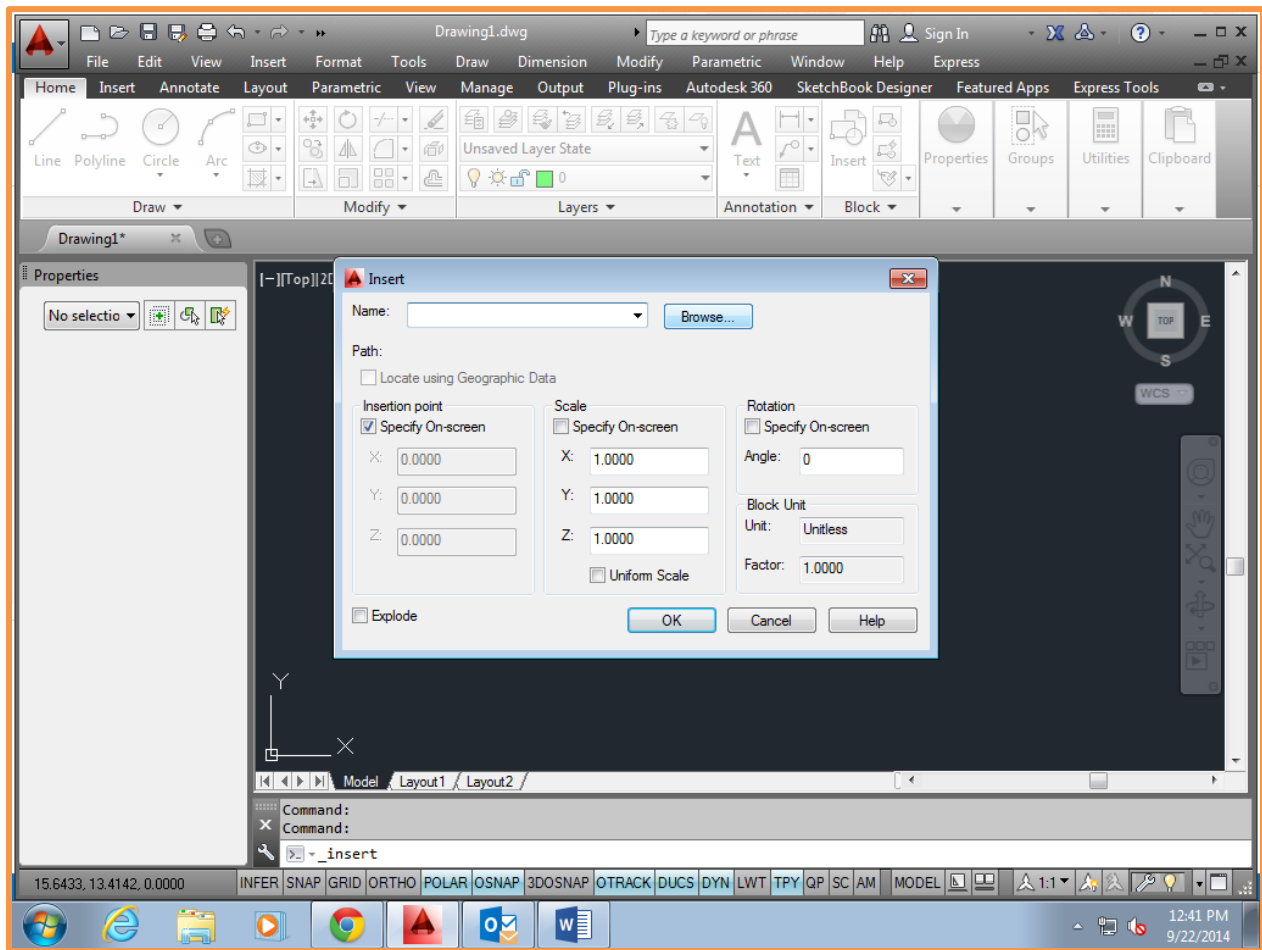


FIG 5.4

STEP FIVE: EDIT A DEFINED ATTRIBUTE FIG 5.5

ERASE ORIGINAL CIRCLE/TEXT BUT KEEP THE BLOCK YOU INSERTED (THE CIRCLE WITH ATTRIBUTES

TYPE **ATE** (ATTRIBUTE EDIT) AT THE COMMAND LINE/DYN

SELECT ANY PART YOUR ATTRIBUTE AND EDIT (Enter SYM #) USING THE EDIT ATTRIBUTES DIALOG BOX

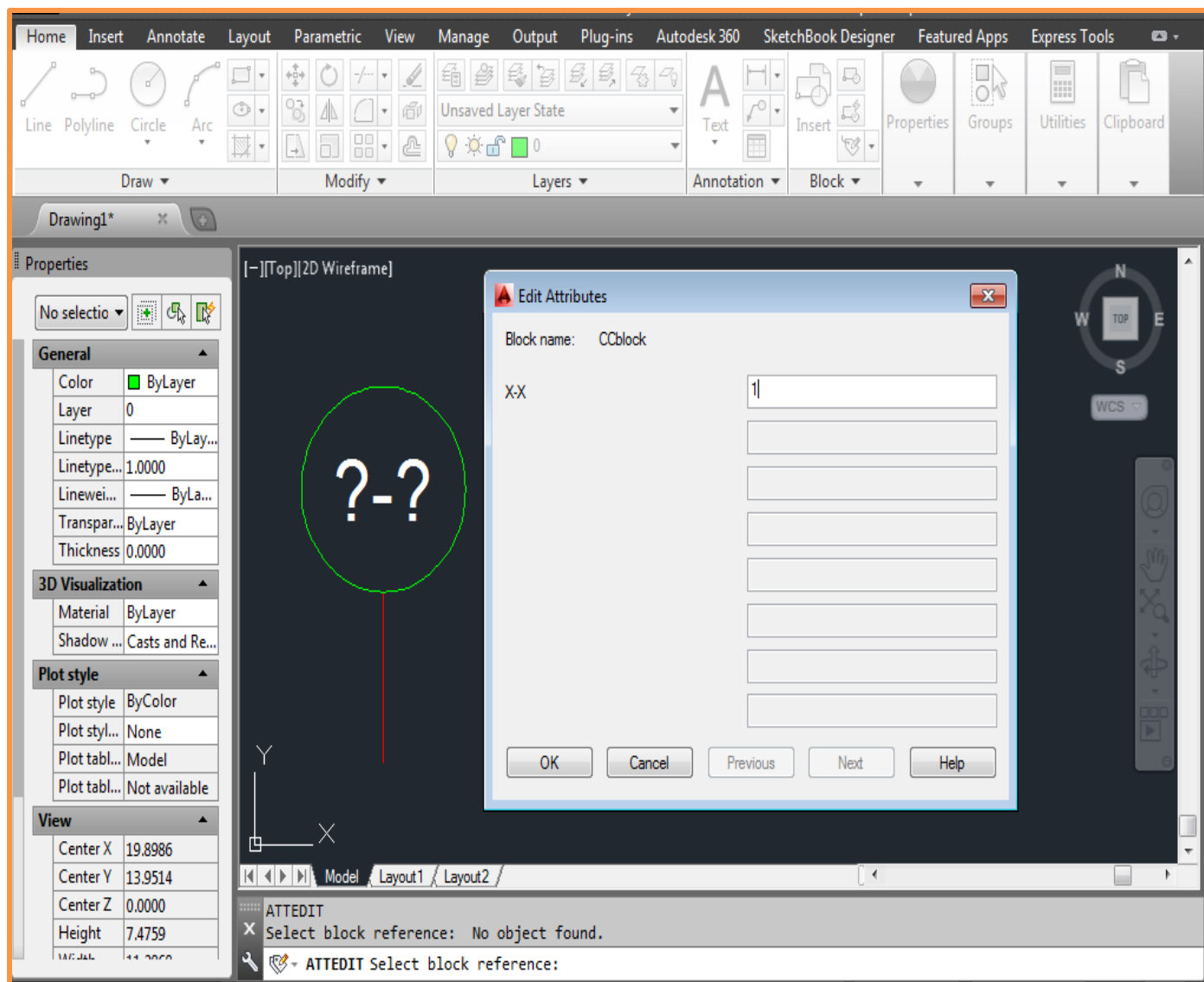


FIG 5.5

STEP SIX: CREATE THE DOTS/WIRE CONNECTIONS USING THE DONUT TOOLS FIG 5.6

DONUTS: (DO THESE LAST AFTER DWG IS COMPLETED)

DRAW-DONUT---INSIDE DIAMETER =0---OUTSIDE DIAMETER=.30---SELECT
ENDPOINTS/ETC.

IF .3 IS TOO LARGE OR TOO SMALL, CHANGE IT TO LOOK LIKE THE DOTS ON THE PDF.

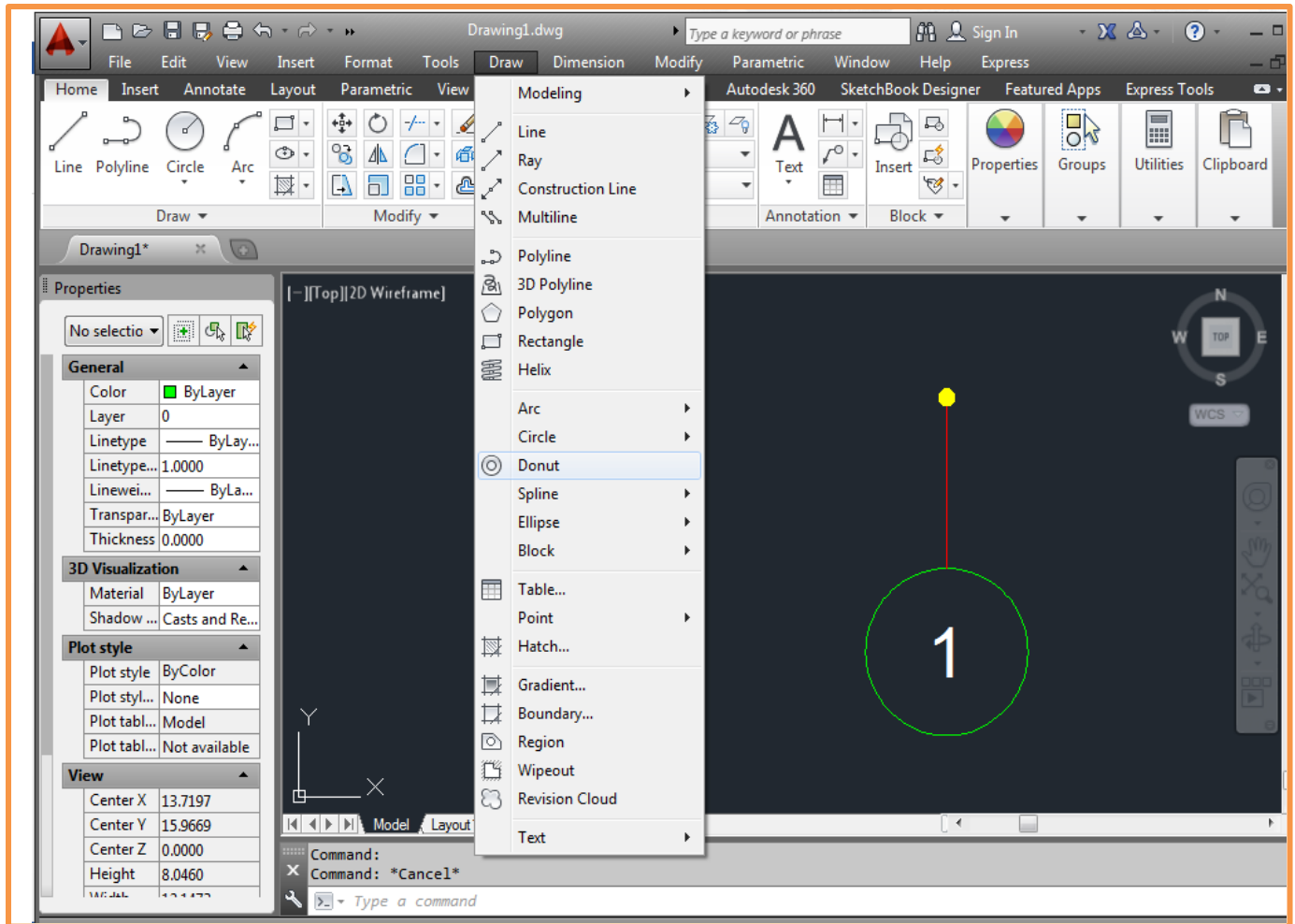


FIG 5.6

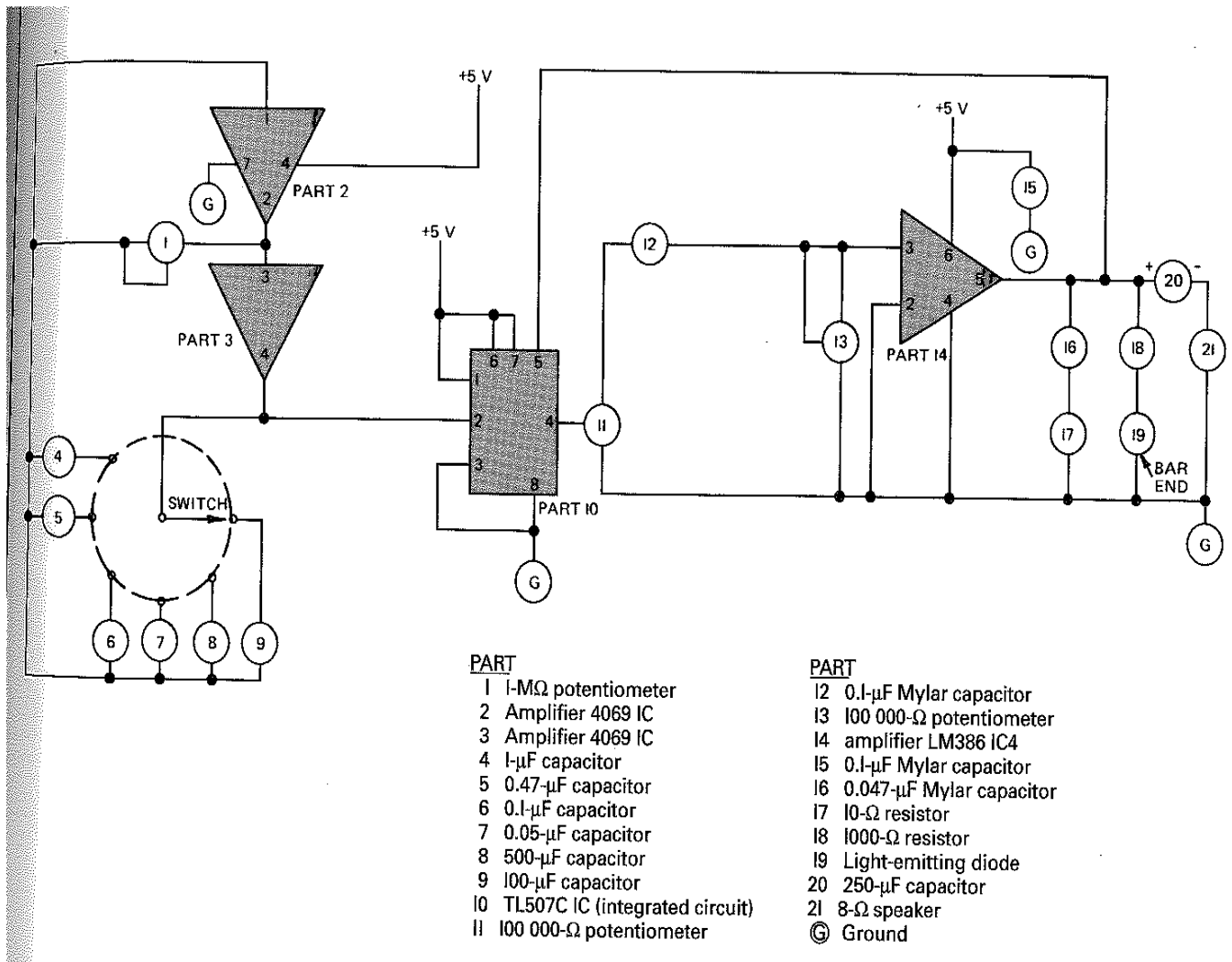
Instructor resources:TITLE: **ELECTRICAL SCHEMATIC**

SCALE: Not to scale (NTS)

DWG. # **CC-1**

COMPLETE THIS WIRING SCHEMATIC AS SHOWN, USE THE BLOCK YOU CREATED WITH THE EDITTABLE ATTRIBUTE TO DO THE CIRCLE SYMBOLS WITH NUMBER INSIDE. TO EDIT THE ATTRIBUTE VALUE TYPE ATE AND SELECT THE BLOCK. DO NOT TYPE OUT THE TEXT IN THE BOTTOM RIGHT HAND CORNER

SET THE DRAWING IN THE VIEW PORT WITH NO SCALE, ZOOM EXTENTS WITH VIEW PORT OPEN, ROTATE THE VIEW 90 DEGREES. DON'T SHADE THE SYMBOLS.



DEFINE THE FOLLOWING TERMS:

ATTDEF (Command)

Creates an attribute definition for storing data in a

ATE COMMAND

Type ATE edit Attribute.

WRITE BLOCK (WBLOCK)

wblock at the Command prompt displays a standard file selection dialog box in which to specify a name for the new drawing file, followed by command.

BLOCK

Blocks are compound objects that are commonly used for symbols, parts, detail views, and title blocks.

DONUT COMMAND

Donuts are filled rings or solid-filled circles that are actually closed polylines