

ATTRIBUTION-NONCOMMERCIAL-NODERIVS CC BY-NC-ND

LAB #3 INSERTING TITLE BLOCK (TBK)/PAGE SETUP/PLOTTING DWG'S

LEARNING OBJECTIVES:

STUDENT WILL BEGIN TO

1. LEARN TO SET UP A CADD DRAWING TO BE PLOTTED USING A LARGE FORMAT PLOTTER
2. LEARN TO SET UP A CADD DRAWING TO BE PRINTED ON A STANDARD PRINTER.
3. EXPLORE THE FOLLOWING COMMANDS/TOPICS DURING THIS LAB.

[Click to watch video LAB #3 VIDEO](#)

DEFINE THE FOLLOWING TERMS:

LAYOUT TAB

PAGE SET UP MANAGER

PAPER SPACE/MODEL SPACE

PEN ASSIGNMENTS

PLOTTING

LIVEWEIGHT

INSERT BLOCK

(RC=RIGHT CLICK, LC=LEFT CLICK)

STEP ONE: SET UP LAYOUT TAB FIG. 3.1

IN PAPER SPACE –RIGHT CLICK (RC) THE LAYOUT 1 TAB---RENAME---TYPE IN THE DWG NAME--
ENTER

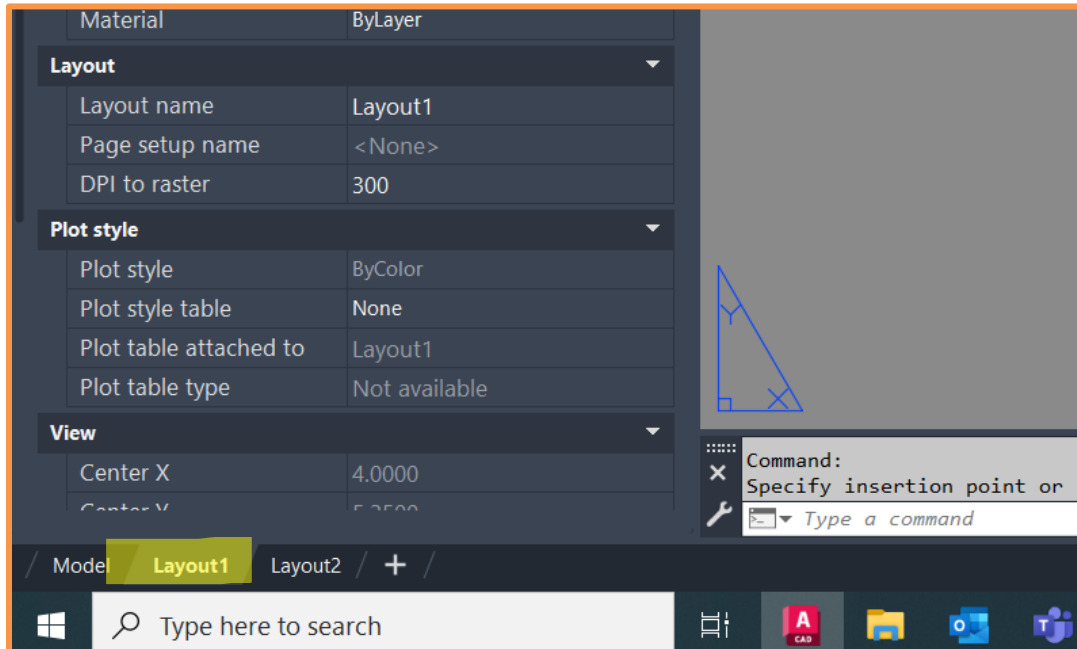


FIG-3.1

STEP TWO: TO SET UP PRINTER PAGE SETUP MANAGER FIG. 3.2

RC THE TAB YOU JUST NAMED ---PAGE SET UP MANAGER---MODIFY—SELECT PRINTER --
SELECT--PORTRAIT FOR DWG ORIENTATION

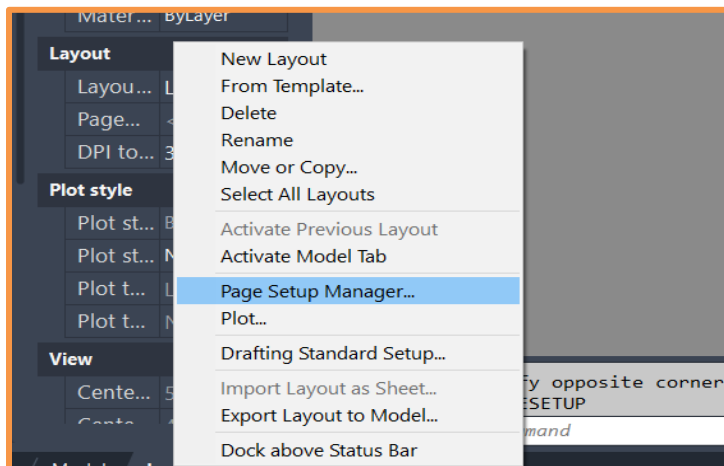


FIG-3.2

STEP THREE: SET UP MONOCHROME PEN WEIGHTS IN THE PRINTER SETUP FIG. 3.2

SELECT MONOCHROME FROM PLOT STYLE PULLDOWN MENU---SELECT THE BOX TO THE RIGHT OF THE MONOCHROME STYLE THAT HAS A PENCIL ON IT.

SELECT EDIT LINE WEIGHTS—INCH—OK

SELECT COLOR---LIVEWEIGHT-----APPLY APPROPRIATE LINE WEIGHT TO THE COLOR AS INDICATED

RED	.0071
YELLOW	.0098
GREEN	.0197
CYAN	.0138
BLUE	.0236
MAGENTA	.0039
WHITE	.0118
GRAY	.0020

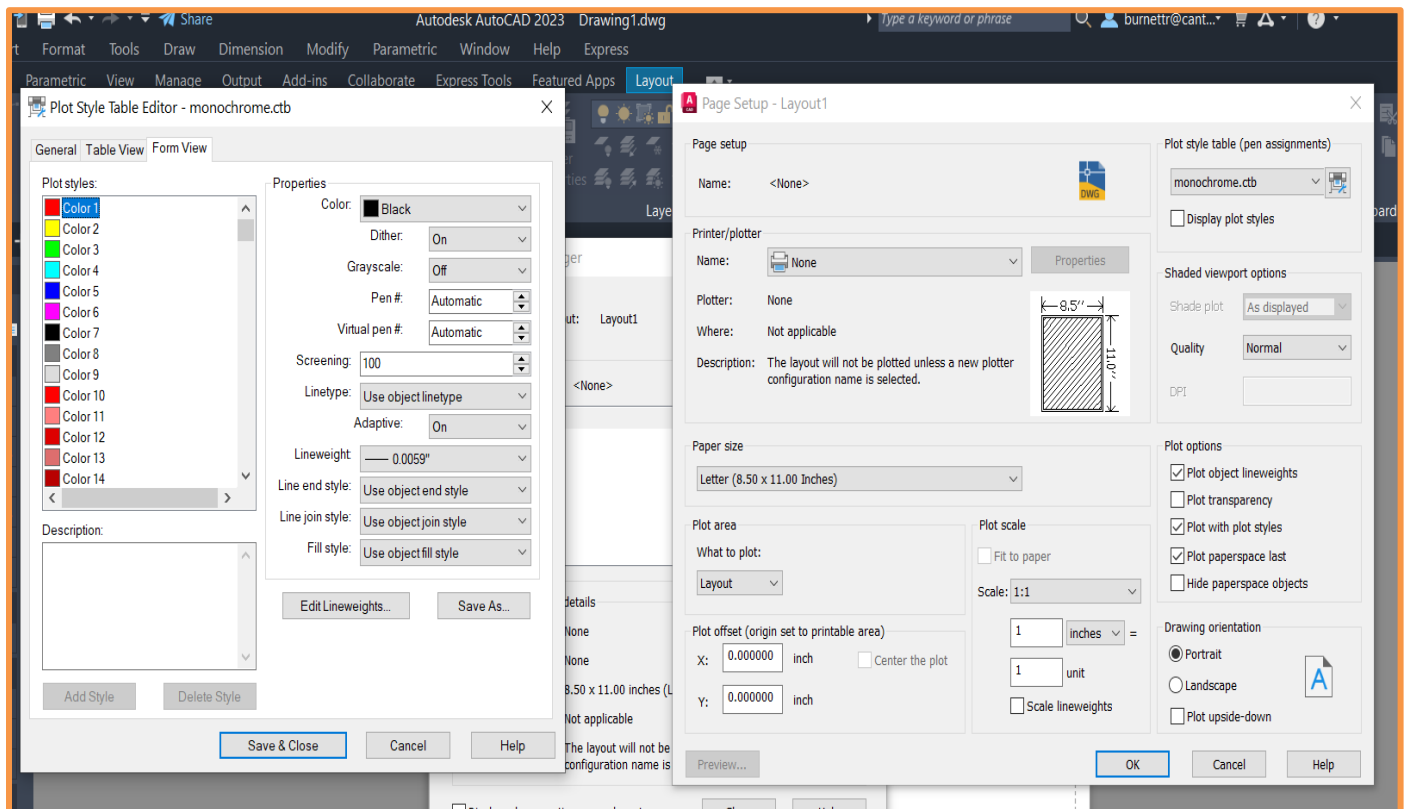


FIG-3.3

STEP FOUR: INSERTING THE TITLE BLOCK INTO PAPER SPACE FIG. 3.4,3.5,3.6.

SAVE THE DRAWING FILE AS 8X11-TBK.DWG

CREATE A NEW BLUE LAYER NAMED BORDER--SET BORDER LAYER AS CURRENT LAYER

SELECT INSERT BLOCK--BROWSE LOCATE THE 8X11-TBK.DWG---OPEN--OK---INSERT AT 0,0

YOU WILL BE PROMPTED TO FILL OUT THE TITLE BLOCK (TBK) AS YOU INSERT THE BLOCK, LEAVE THEM BLANK AND HIT ENTER UNTIL THE FILE COMES INTO YOUR DRAWING.

EDIT THE TEXT IN THE TBK BY TYPING -ATE OR ATTRIBUTE EDIT—SELECT THE TBK—ENTER INFORMATION AS NEEDED

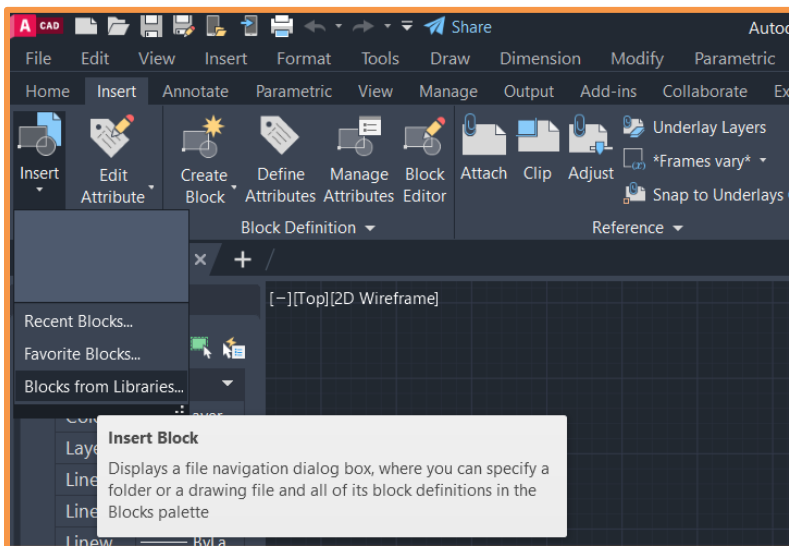


FIG-3.4

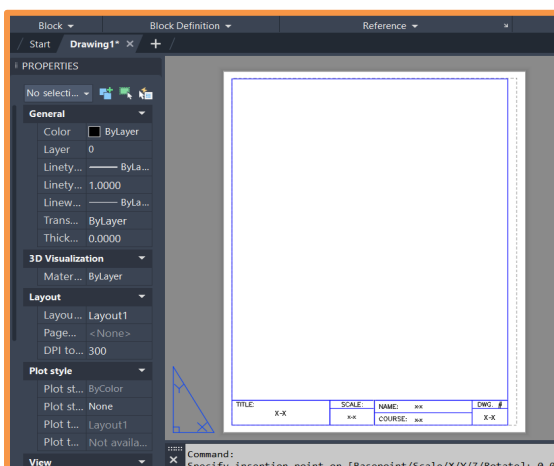


FIG-3.5

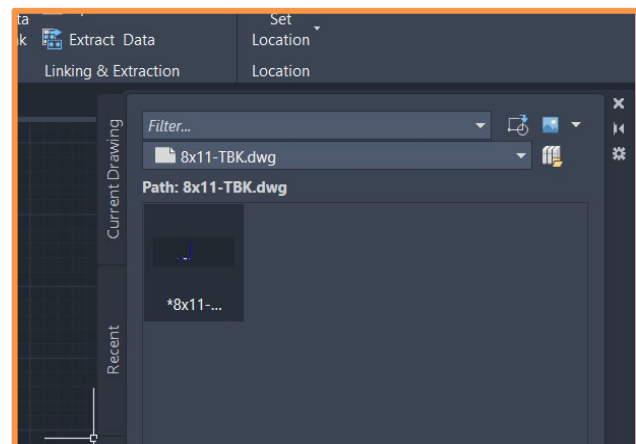


FIG-3.6

STEP FIVE: SETTING UP VIEWPORTS IN PAPER SPACE

CREATE A RED LAYER CALLED VIEWPORT (VP) FIG. 3.7

TYPE IN **MENUBAR** IN COMMAND LINE AND SET **MENUBAR TO 1--ENTER**

FROM THE PULL-DOWN MENU SELECT **VIEW---VIEWPORTS---1VIEWPORT** FIG. 3.8

WITH OSNAP OFF LC INSIDE THE TOP RIGHT CORNER OF THE TBK AND CREATE A VIEWPORT THAT DOES NOT GO OUTSIDE OF THE TBK AND STAYS APPROX. $\frac{1}{4}$ " INSIDE THE TBK FIG. 3.8

FREEZE THE VPORT LAYER BY CLICKING ON THE SNOWFLAKE SO IT BECOMES GRAY

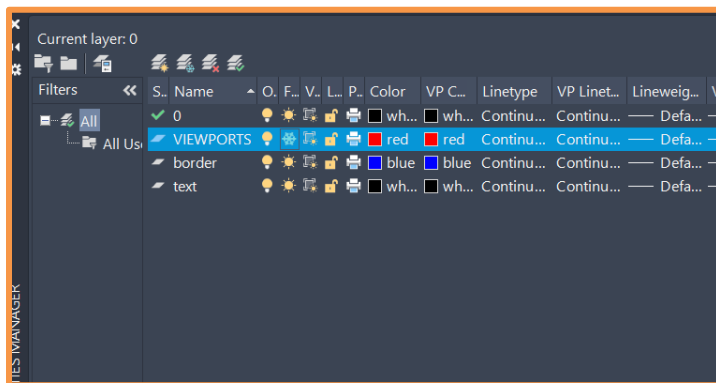


FIG-3.7

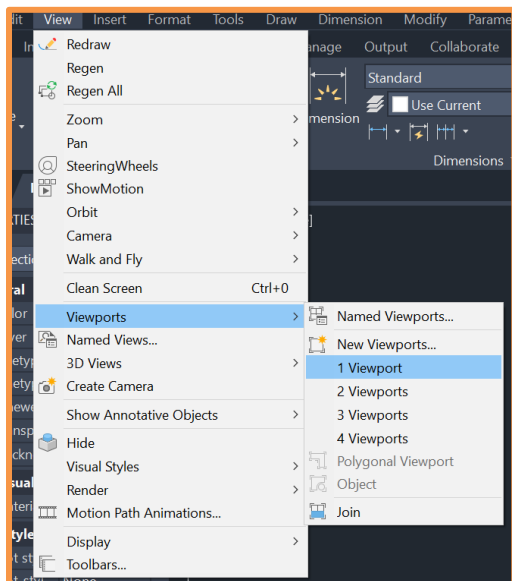


FIG-3.8

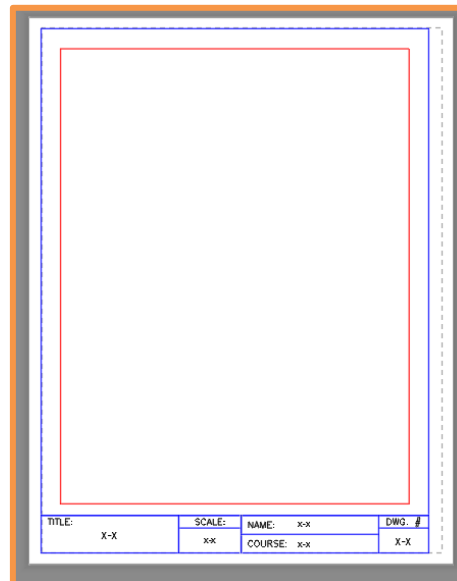


FIG-3.9

SCALE VIEWPORT

DOUBLE CLICK INSIDE THE RED VIEWPORT YOU CREATED, THIS WILL OPEN THE VIEWPORT ALLOWING YOU TO CHOOSE THE CORRECT SCALE AND ROTATE THE VIEW, AS NECESSARY. FIG. 3.10

SELECT FROM THE SCALE TOOL NEAR THE CLOCK IN THE LOWER RIGHT CORNER FIG 3.11

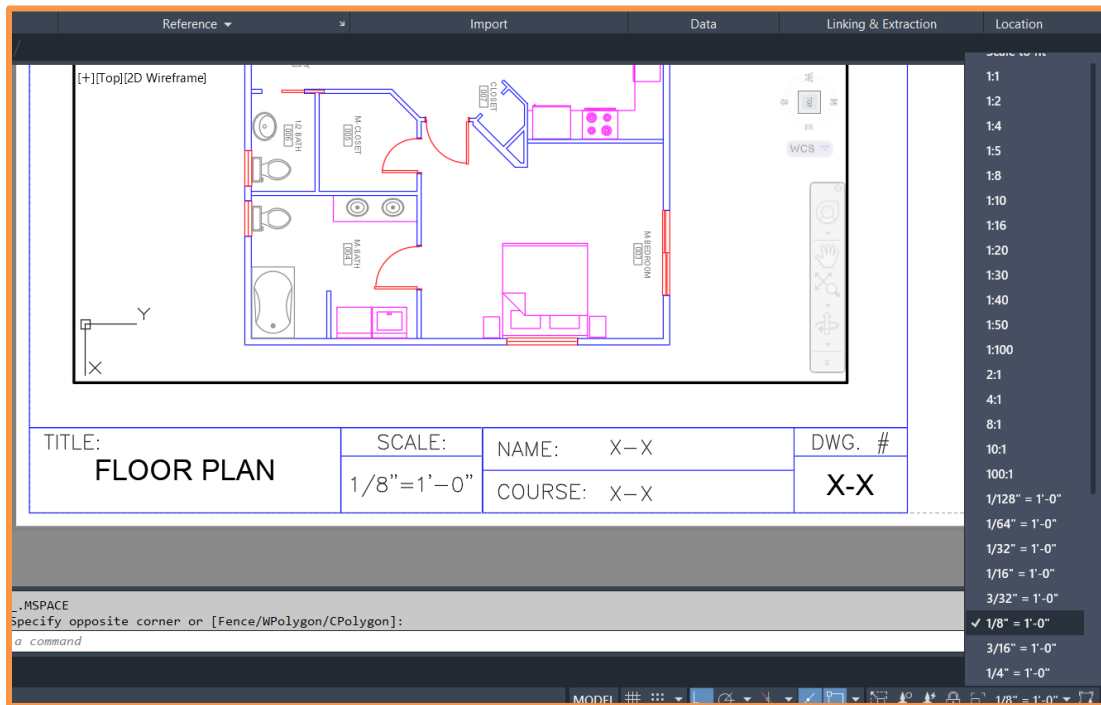


FIG -3.10

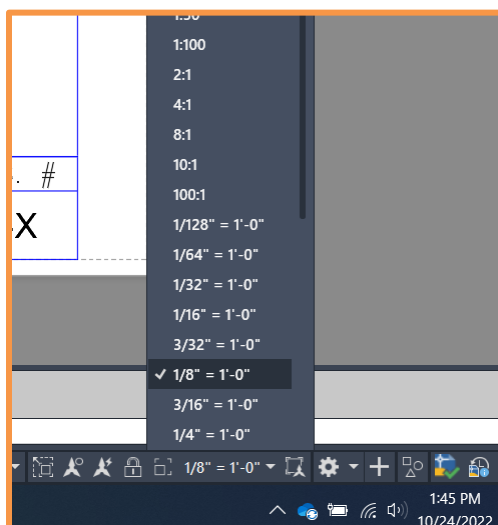


FIG 3.11

TO OPEN THE VIEWPORT DOUBLE CLICK INSIDE THE VIEWPORT, TO EXIT OUT OF IT DOUBLE CLICK THE SCREEN OUTSIDE OF THE VIEWPORT

STEP SIX: FINAL STEP PLOTTING THE DWG FIG 3.13

GO TO FILE PULLDOWN MENU---PLOT---DO A PREVIEW HIT ESC TO EXIT THEN SELECT OK. THIS WILL PLOT THE DWG TO THE PRINTER YOU HAVE CHOSEN. FIG 3.14

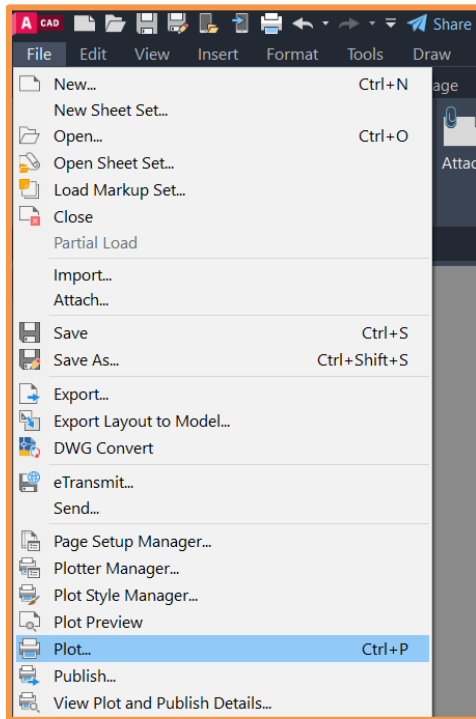


FIG-3.13

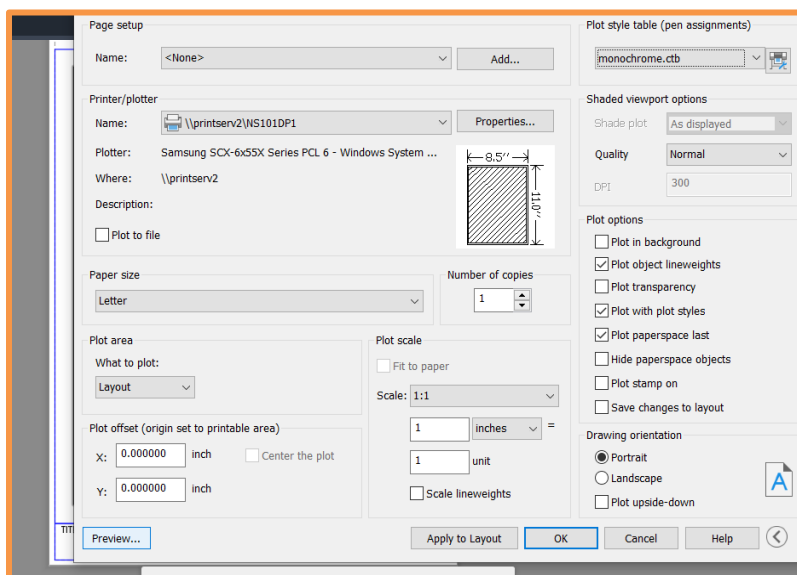


FIG 3.14

Instructor resources:

DEFINE THE FOLLOWING TERMS:

LAYOUT TAB-

The paper space tab is where you set up your title block with viewport/viewports. To be renamed indicating what drawing is on each tab.

PAGE SET UP MANAGER-

The page set up manager tool is used to set up the AutoCAD drawing for printing to a printer or plotting to a large format plotter.

PAPER SPACE/MODEL SPACE-

Most of the CAD drawing is created in model space. Print/Plot set up is done in paper space.

PEN ASSIGNMENTS-

The pen Assignment is the part of Plot style you can control the line weight thickness, colors, Line styles. This is done to create contrast in a black and white drawing to make it easier to interpret.

PLOT/PLOTTING-

Plots a drawing to a plotter, printer, or file in the command.

LINEWEIGHT-

When plotting to PDF, printing to a physical printer, or publishing from AutoCAD, object line weights display thicker, thinner, darker, or lighter than displayed in the drawing. When plotting to PDF, printing to a physical printer, or publishing from AutoCAD, object line weights

INSERT BLOCK-

Tool used to insert a CAD BLOCK into a CAD drawing, in this case the BLOCK is the drawing title block inserted into paper space

