

How Can The Implementation of Greywater Practices Be Used To Create A More Sustainable Landscape?

What is Greywater?

Greywater is the waste water produced from our sinks, showers, bath tubs, dishwashers, and washing machines that would normally be disposed of directly into the sewage system.



How Much Greywater Do We Produce?

On average:

40 gallons/person/day

That adds up to **14,600 gallons/person/year**

Site:

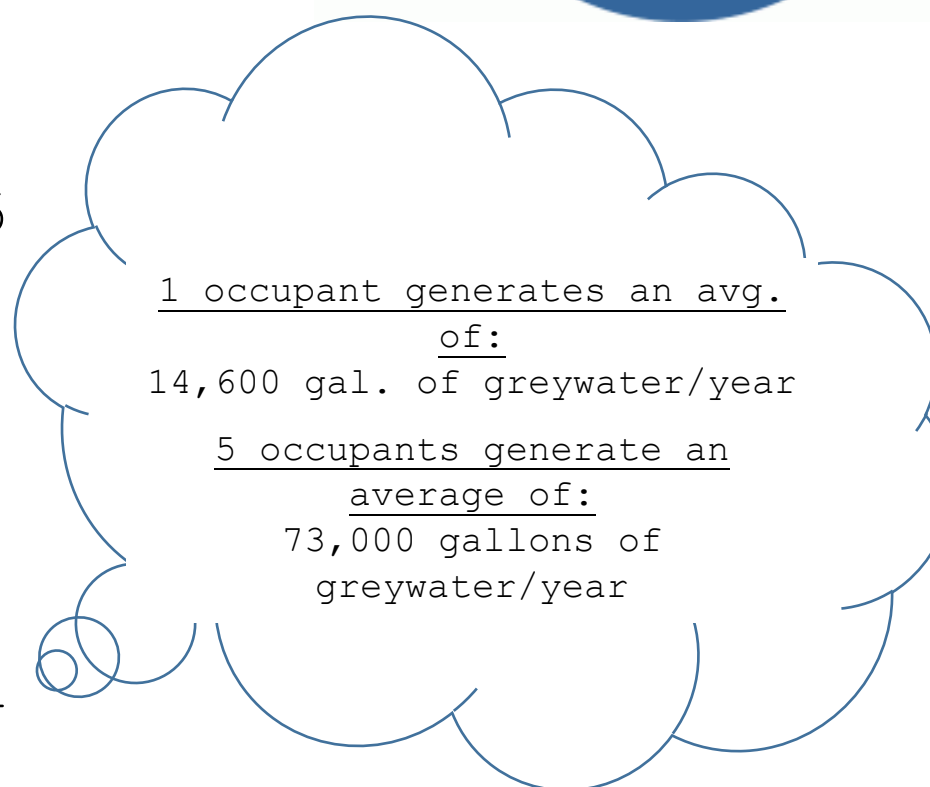
19 Country Ct. Farmingdale, NY 11735
9,520 sq. ft.

Flat property w/ little to no grade change

5 occupants in a 2 story split level residence

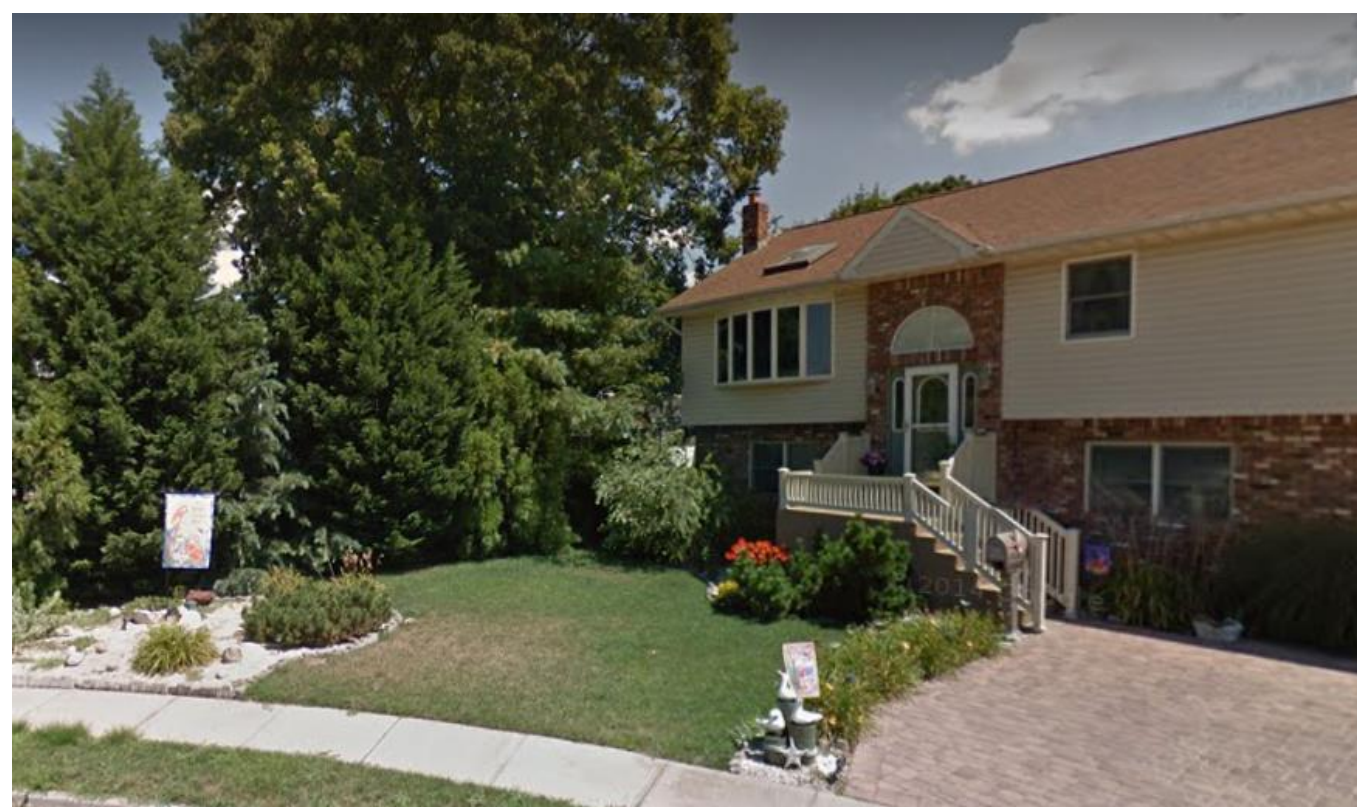
Western facing property allows for full sun in backyard in the morning and full sun in the front yard in the afternoon

Existing landscape consists of simple foundation plantings, large driveway, and small concrete patio in the backyard

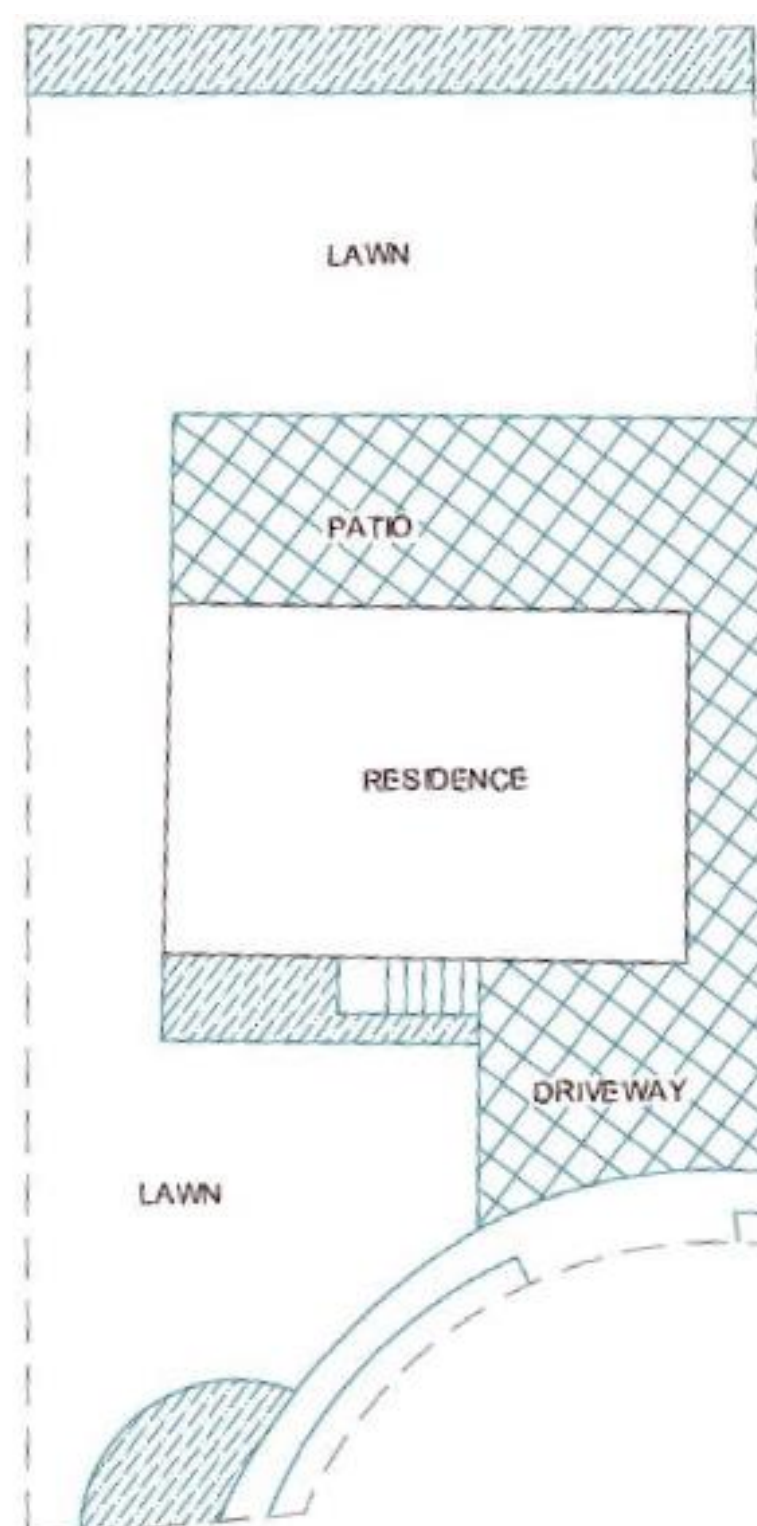


Scope of Design: Create a sustainable landscape that focuses on the **USE**, **EDUCATION**, and **CELEBRATION** of greywater.

Capstone Goal: Accounting for overflow, and the irrigation system being out of use for the winter months, I am saving 40% of the greywater that is generated.



Existing Site



Proposed Design

