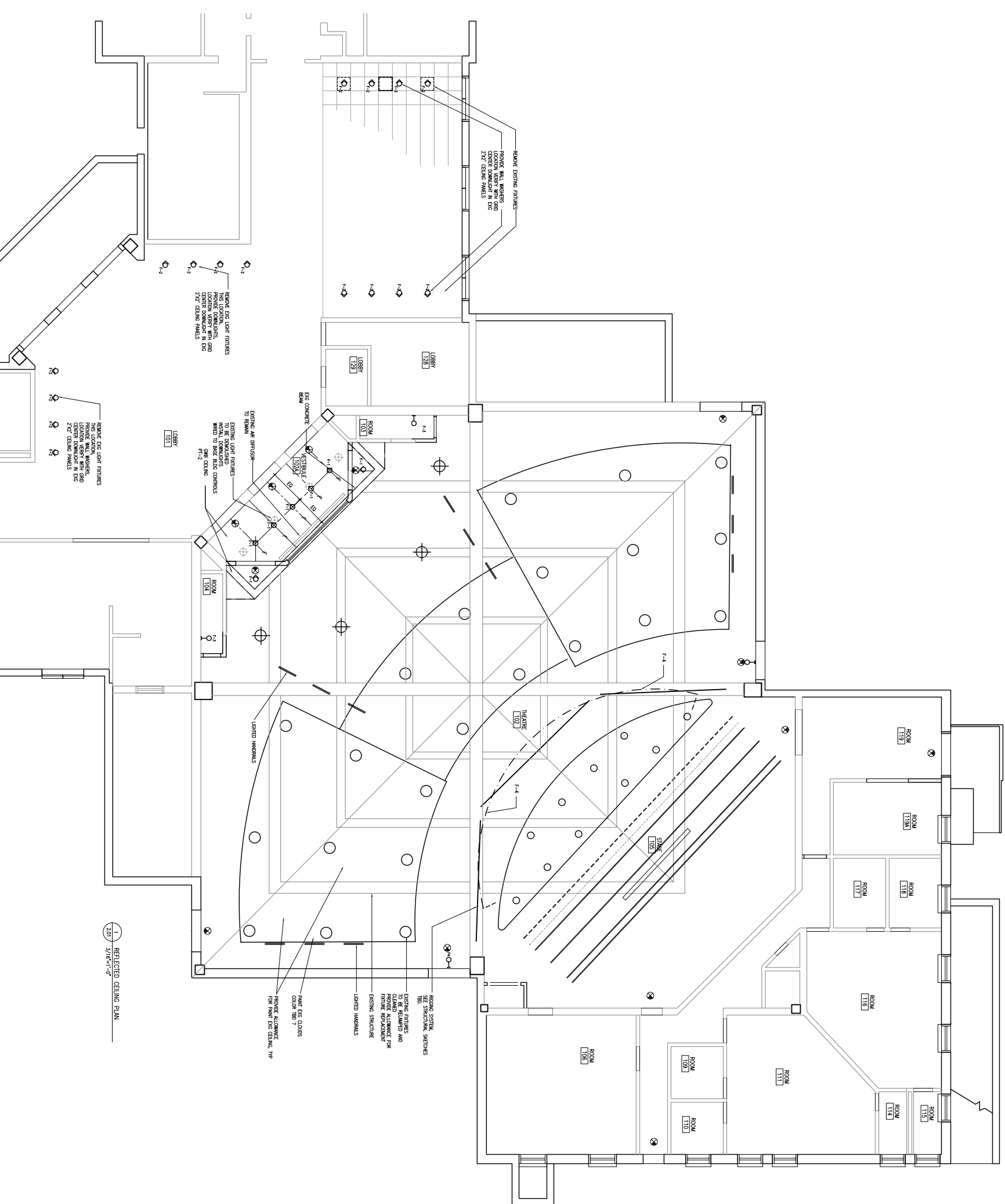


- LIGHTING LEGEND:**
- ⊕ F-5 PENDANT MOUNTED LIGHT FIXTURE
 - F-2 RECESSED ADJUSTABLE LIGHT FIXTURE AT LOBBY
 - F-5 CEILING MOUNTED LIGHT FIXTURE
 - ⊖ F-3 WALL SCONCE
 - ⊗ EXIT SIGN
 - LED LIGHT
 - LIGHTED HANDRAILS

- F-1 ● VESTIBULE LIGHTROLLER VITECOSTER 3" DIA. RECESSED DOWN LIGHT W/STEP Baffle #1000/LANT W/WR-16 LAMPING/42-75W W/10SS WHLV WHITE WHITE Baffle
- F-2 ● LOBBY LIGHTROLLER VITECOSTER 8" H X 5" DIA. RECESSED ADJ DOWN LIGHT W/CLEAR ALZM CONE #1000/LANT W/WR-16 LAMPING/42-75W W/1004 LV SPEC/DARK CLR CONE
- F-3 ● STAR TO PROL BOOTH & STORAGE LIGHTROLLER LUMINODE 6" X 10" FLUORESCENT SURFACE MT., #6737MH
- F-4 ● STAGE EDGE ACCTG LIGHT COLOR KINETICS AW CORE POWERCORE LIGHT 10" LONG LEADER CABLE W/STRAN RELIEF, 6" FIXTURES, 2800 COLOR TEMPERATURE
- F-5 ● EXISTING THEATRE LIGHT
- F-6 ● EXG RECESSED STEP LIGHT TB0

LIGHTING NOTES
ALL LIGHTING TO BE TIED INTO THEATRE HOUSE DIMMING & LIGHTING PANELS



1 REFLECTED CEILING PLAN
20' 3/16" x 11'-0"

Not For Construction

| | | |
|----|--------------|-----------|
| 1 | 2.28.10.2007 | PROLOG SR |
| 2 | 2.28.10.2007 | PROLOG SR |
| 3 | 2.28.10.2007 | PROLOG SR |
| 4 | 1.20.10.07 | PROLOG SR |
| 5 | | |
| 6 | | |
| 7 | | |
| 8 | | |
| 9 | | |
| 10 | | |

Reflected Ceiling Plan
First Floor

| | |
|---------|-----------------|
| DATE | 15 October 2007 |
| BY | VJG |
| CHECKED | 2075.03 |